

NVIDIA Video Card  
Software Installation Guide for T221 flat-panel monitor

This document describes how to install the Quadro4 900 / 980XGL / Quadro FX1000 / 2000 / 3000 display driver for Windows 2000/ XP for use with the IBM T221 flat-panel monitor.

**Preparation**

*For 900 / 980 XGL FX1000 / 2000 / 3000 pre-installed IBM PC :* The Windows 2000/XP driver suitable for 900 / 980XGL FX1000 / 2000 / 3000 pre-installed IBM PC (IntelliStation) is available for downloading from <http://www.pc.ibm.com>. Please go to the website and search the driver by key words "+xxxx +T221", where xxxx is your NVIDIA video card pre-installed IntelliStation Machine Type such as 6850. Please download the device driver for use with T221 and write it onto a removable storage like a CD-R or directly download it onto your PC that you will connect to the T221 monitor.

*For other NVIDIA Video Card for T221:* Please use the driver provided from the video card vendor and follow the instruction available from the vendor.

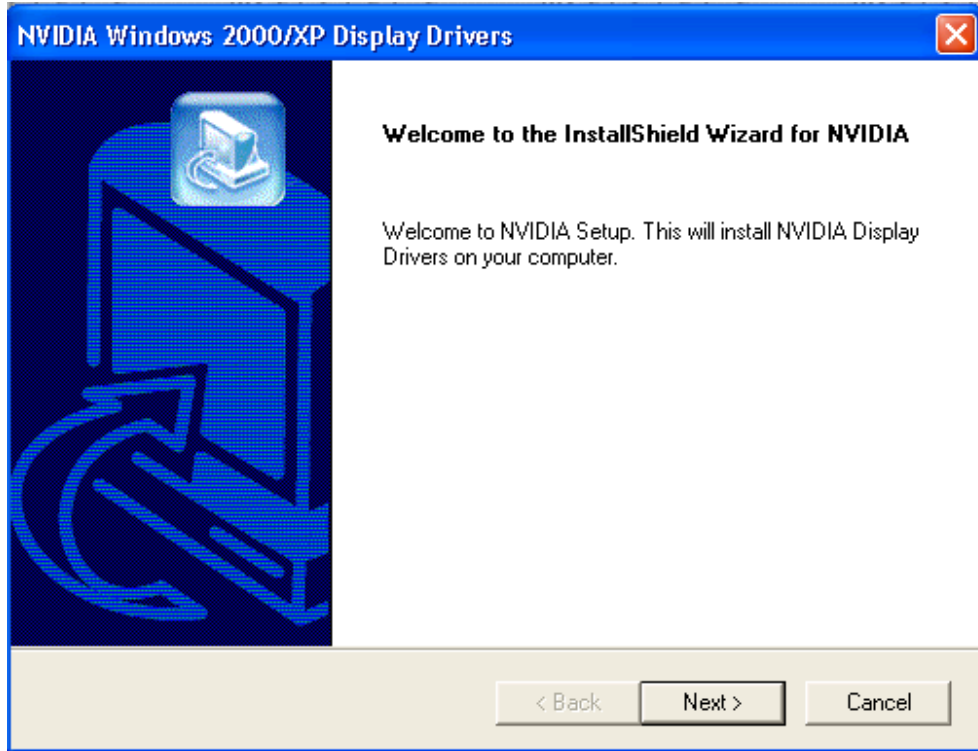
**1. Software Installation for Windows 2000/XP**

To install the display driver, follow these steps:

1. Remove existing video driver.
2. Restart the PC.
3. The Windows 2000/XP desktop appears.  
Note: A warning message, "The hardware has changed," may appear, ignore this message.
4. If you created a driver CD-R disk, insert it into the CD-ROM drive of your personal computer and double click the driver file on the CD. If you downloaded the driver onto the PC, double click the driver file.
5. Choose the directory for storing the driver files by following the instructions in the dialog boxes. Next, go to the directory where you have chosen to store the driver files. Double click "Setup.exe" in the directory.

NVIDIA Video Card  
Software Installation Guide for T221 flat-panel monitor

6. The following screen appears. Click the **Next** button and continue the installation.



NVIDIA Video Card  
Software Installation Guide for T221 flat-panel monitor

7. For Windows XP, please follow the instruction in section 7.1.

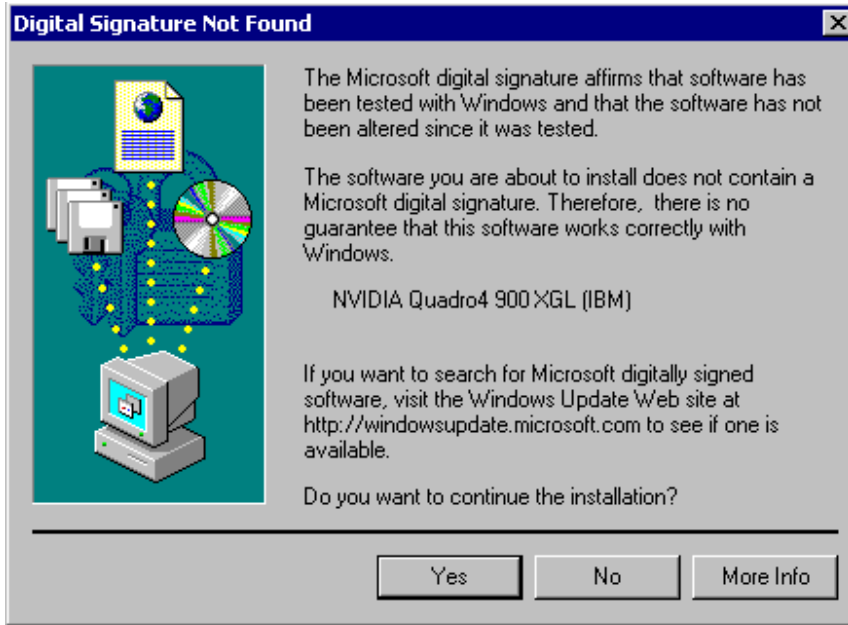
For Windows 2000, please follow the instruction in section 7.2.

7.1 WinXP: If **Hardware Installation** dialog box appears, then click the **Continue** button.



NVIDIA Video Card  
Software Installation Guide for T221 flat-panel monitor

**7.2 Win 2000:** If **Digital Signature Not Found** dialog box appears, then click the **YES** button.



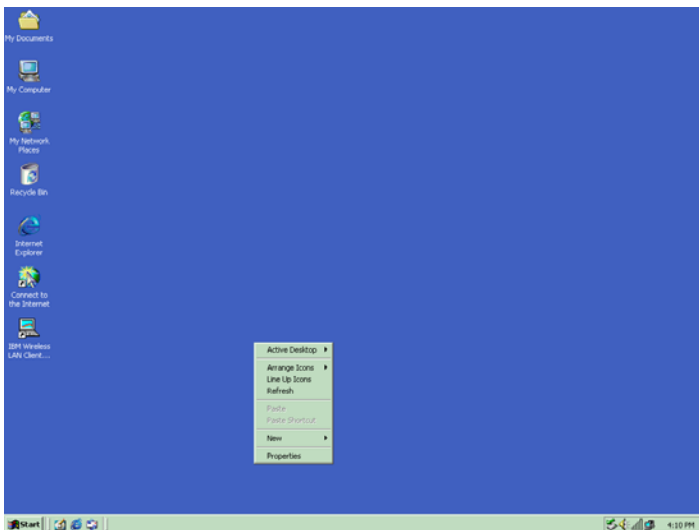
8. When the **Installation completes** message appears. Select **“Yes, I want to restart my computer now”** and then click the **Finish** button. This will restart your computer.

This completes the software installation for Windows 2000/XP. Please go to the next section, **Software Settings for Windows 2000/XP**.

NVIDIA Video Card  
Software Installation Guide for T221 flat-panel monitor

● **Software Settings for Windows 2000/XP**

1. The Windows 2000/XP system restarts and Windows desktop appears. If **NVIDIA nView Multi Display Setup Wizard** dialog box appears, click the **Cancel** button
2. Click the right mouse bottom on any area of the Windows desktop where no program is running, and then select **Properties**



The **Display Properties** appears.

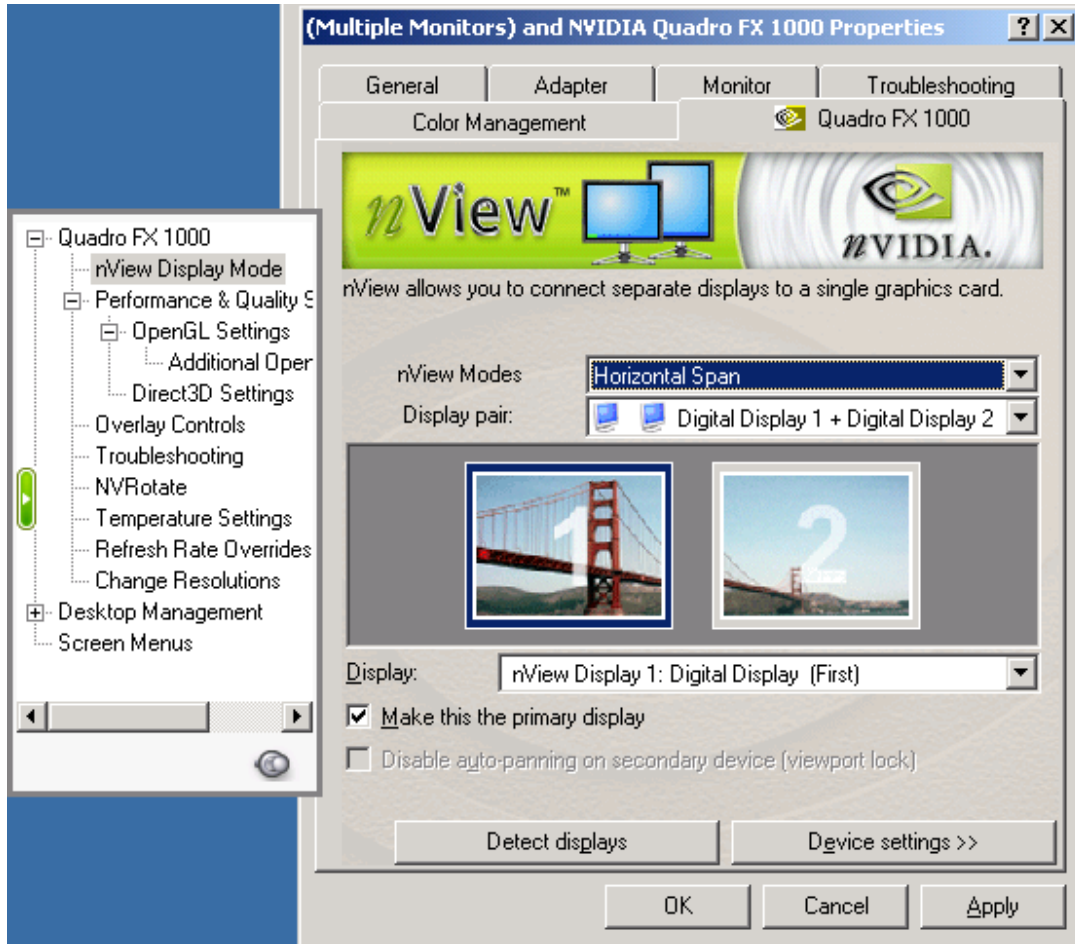
Please go to step3, if you use Windows 2000 and the connection between your PC and the T221 is

- (1) two single link DVI cables or
- (2) one dual link DVI cable with the converter box and one single link DVI cable.

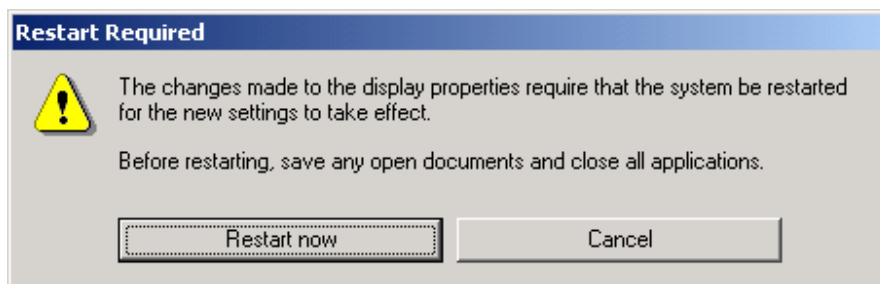
Otherwise, please go to step 5.

NVIDIA Video Card  
Software Installation Guide for T221 flat-panel monitor

3. Select the **Quadro FX3000** dialog via **Display Properties > Settings > Advanced > Quadro FX3000**. Select **horizontal Span** from **nView Modes** and click the **OK** button.

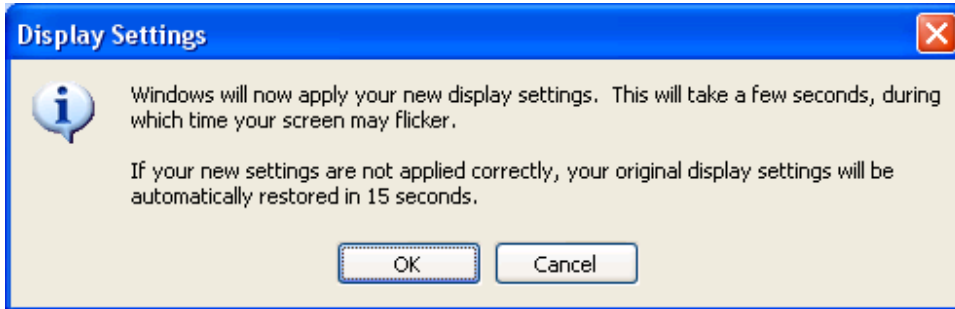


4. The following dialog box appears. Click the **Restart now** button. This will restart your computer.

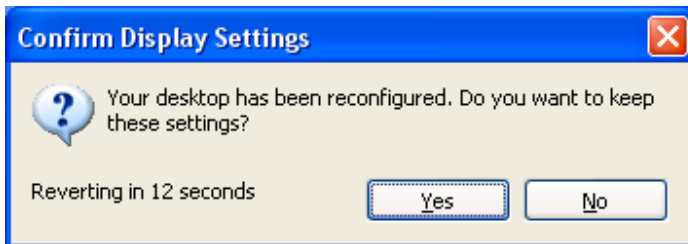


NVIDIA Video Card  
Software Installation Guide for T221 flat-panel monitor

5. Select the **Settings** dialog via **Display Properties > Settings**. Set screen resolution to **3840x2400 pixels**. Please set the color quality to **Highest(32 bit)** if you like. Click the **OK** button.
6. The following dialog box appears. Click the **OK** button.



7. The screen turns blank, momentarily. The new Windows desktop and the following dialog box appears. Click the **YES** button in the dialog box.



8. If the connection between your PC and the T221 is
  - two single link DVI cables or
  - one dual link DVI cable with the converter boxand something wrong about the screen image, Select the **Monitor** dialog via **Display Properties > Settings > Monitor**. Set screen refresh rate to **2x Hz**, where x is a number such as "4". Click the **OK** button.

**This completes the software settings for Windows 2000 / XP.**