

RAID Function

User Manual

Table of Contents

INTRODUCTION.....	1
WHAT IS THE FASTTrak 100-LITE RAID CONTROLLER?	1
KEYS FEATURES AND BENEFITS	2
GETTING STARTED	4
INSTALLING THE HARD DRIVES	4
CHECKING CMOS SETTINGS.....	5
USING FASTBUILD™ CONFIGURATION UTILITY.....	10
VIEWING BIOS SCREEN.....	10
NAVIGATING THE FASTBUILD™ SETUP MENU	11
CREATING ARRAYS AUTOMATICALLY	12
VIEWING DRIVE ASSIGNMENTS	14
MANUALLY CREATING AN ARRAY	15
DELETING AN ARRAY	20
REBUILDING A MIRRORRED ARRAY	22
VIEWING CONTROLLER SETTINGS	24
INSTALLING DRIVERS.....	25
WINDOWS 2000	25
WINDOWS 9X/ME.....	27
WINDOWS NT4	31
USING THE FASTCHECK™ MONITORING UTILITY.....	33
INSTALLING FASTCHECK.....	33
RUNNING FASTCHECK	34
CLOSING FASTCHECK.....	34
USING FASTCHECK ARRAY WINDOW.....	35
SYNCHRONIZING AN ARRAY	38
REBUILDING AN ARRAY	40
USING CONTROLLER WINDOW.....	43
USING OPTIONS WINDOW.....	46
UNDERSTANDING DISK ARRAY CONCEPTS.....	54
ABOUT FASTTrak 100-LITE DISK ARRAY ADAPTER	54
ABOUT ADAPTER BIOS.....	54
FASTBUILD™ AUTO MENU SETUP.....	54
RESERVED SECTOR	54
DISK ARRAY TERMS	55
ABOUT RAID LEVELS.....	56
TROUBLESHOOTING & TIPS.....	58
MOTHERBOARD ISSUES.....	58
SYSTEM CMOS ISSUES.....	59

DRIVE-RELATED ERRORS	59
OPERATING SYSTEM-RELATED ERRORS	63
FREQUENTLY ASKED QUESTIONS.....	67
PRE-INSTALLATION.....	67
DRIVE ISSUES	69
INSTALLATION ISSUES	70
POST-INSTALLATION.....	71

Introduction

What is the FastTrak100-Lite RAID controller?

FastTrak100-Lite to provide a cost-effective, high performance RAID controller that adds performance and/or reliability to PC desktops and/or servers using Ultra ATA/100, Ultra ATA/66, or EIDE drives.

FastTrak100-Lite supports striping (RAID 0) or mirroring (RAID 1), separately.

With striping, identical drives can read and write data in parallel to increase performance.

Mirroring increases read performance through load balancing and elevator sorting while creating a complete backup of your files.

A FastTrak100-Lite striped array can double the sustained data transfer rate of Ultra ATA/100 drives. FastTrak100-Lite fully supports Ultra ATA/100 specification of up to 100 MB/sec per drive, depending on individual drive specifications.

FastTrak100-Lite also offers fault tolerant, data redundancy for entry-level network file servers or simply for desktop PC users wanting to continually protect valuable data on their PC.

FastTrak100-Lite offers RAID 1 mirroring (for two drives) to protect data. Should a drive that is part of a mirrored array fail, FastTrak100-Lite uses the mirrored drive (which contains identical data) to assume all data handling. When a new replacement drive is later installed, FastTrak100-Lite rebuilds data to the new drive from the mirrored drive to restore fault tolerance.

FastTrak100-Lite's bootable BIOS supports individual drives larger than 8.4GB. With FAT32 and NTFS partitioning, the array can be addressed as one large *single* volume.

Keys Features and Benefits

The following information offers an overview of the major features of your FastTrak100-Lite. It is divided into two areas: Advanced Hardware Design, and Compatibility.

Advanced Hardware Design	
<u>Features</u>	<i>Benefits</i>
Supports data striping (RAID 0) or mirroring (RAID 1)	Provides dramatic increase in drive performance and/or fault tolerant options. Offers performance customization and data rebuilds from the BIOS menu.
Supports Ultra DMA 5/4/3/2/1/0, DMA 2/1/0	Burst data transfer rates up to 100MB/sec from Ultra ATA/100 drives to boost overall system performance.
PCI Plug-n-Play, PCI Interrupt sharing and coexists with motherboard IDE controllers	Easy to install; support four ATA drives on the FastTrak100-Lite while still supporting 4 devices on motherboard ATA controller.
Supports concurrent dual IDE controller operation	Drive workload is distributed in parallel between members of the array.
Supports IDE bus master operation	Allows multitasking during disk transfers which increase CPU efficiency. The CPU is free to process tasks during IDE data transfers through the PCI Bus to/from system memory.
Utilizes FastBuild™ auto-menu from the FastTrak100-Lite BIOS	Offers pre-set application specific settings which can be optimized for Desktop, Server, or A/V Editing. Has "Auto Setup" option for quick and easy array builds.
Displays status and error checking messages during boot-up	Notifies user of possible errors and allows for recovery of mirrored drive arrays directly from FastBuild™.
Employs the latest PCI Ultra ATA/100 ASIC technology.	Fully supports Ultra ATA/100 specifications with 100 MB/sec timing and CRC error-checking at high speeds.
Mirroring supports automatic background rebuilds	Fault tolerance can be restored automatically without rebooting

Raid Introduction

Compatibility	
<u>Features</u>	<i>Benefits</i>
Complies with PCI v2.1 Local Bus standard	Provides highest level of hardware compatibility.
Compliant with PCI IDE Bus Master standard. PCI IDE Bus Master support for Windows 98/95, Windows NT 3.5x, 4.0, Windows 2000, Linux	Provides 32-bit I/O, IDE Bus Master, and Ultra ATA performance for optimal system performance.
Tested compatibility to coexist with motherboards that have integrated IDE controllers	Improves system performance of new and existing installations including motherboard with Intel, VIA chipsets.
Compatible with Ultra ATA/100, Ultra ATA/66, Ultra ATA/33, EIDE	Works with newest and current IDE drive specifications.
Features LBA and Extended Interrupt13 drive translation in controller onboard BIOS	Breaks capacity barriers for support of drives greater than 8.4GB in capacity. Offers flexible storage options for space demanding applications.

Getting Started

This section is designed to get you started for installation of your FastTrak100-Lite.



WARNING: Before installing the driver into an existing system, backup any necessary data. Failure to follow this accepted PC practice could result in data loss.

Installing The Hard Drives



WARNING: If you wish to include your current bootable drive using the Windows NT 4.x or Windows 2000 operating system as part of a bootable Mirrored (RAID 1) array on your FastTrak100-Lite, do NOT connect the hard drive to the FastTrak100-Lite controller yet. You **MUST** install the Windows NT4 or 2000 driver software first (see **Installing Drivers** chapter) to this drive while it is still attached to your existing hard drive controller.

Hard drives must be Ultra ATA/100, Ultra ATA/66, Ultra ATA/33, EIDE and/or Fast ATA-2 compatible to operate with the FastTrak100-Lite RAID Adapter. For optimal performance, install all **identical** drives of the same model and capacity. The drives' **matched performance** allows the array to function better as a single drive.

1. We recommends using identical drive as part of a FastTrak100-Lite array. If striping for performance, use up to two new drives. If mirroring for protection, you can use two new drives OR use an existing drive and a new drive (the new drive must be the same size or larger than the existing drive).
2. Configure the jumpers of the hard drive you're preparing to connect to the FastTrak100-Lite using the correct "Master / Slave" or "Cable-Select" settings in the positions described in the table below.

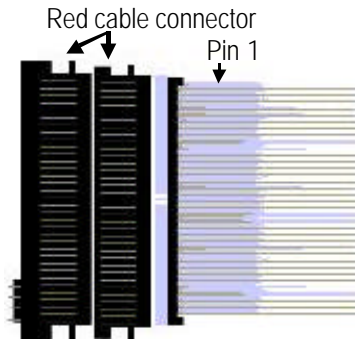
NOTE: Sometimes the Master drive with no slave attached is called "Single." The master slave setting differentiates two drives chained on the same connector.

Jumper Settings		
# of Drives	IDE Channel 1	IDE Channel 2
1	M	----
2	M	M
3	M & S	M
4	M & S	M & S

M = Master, S = Slave

Raid Introduction

3. Install the hard drives into the hard drive bays of your system, including the power cables.
4. Attach one Ultra ATA cable to each hard drive. Then attach one cable to each of the IDE connectors on the motherboard IDE3&IDE4 connector. The colored edge of the cable(s) indicates pin 1 (see below), and the red cable connector must be attached to the motherboard IDE3 & IDE4 connector.



NOTE You must use an 80-wire, 40-pin cable when connecting an Ultra ATA/100 hard drive to the motherboard IDE3 & IDE4 controller.

Checking CMOS Settings

No changes are necessary in the Mainboard CMOS Setup for resources or drive types. Since FastTrak100-Lite is a PCI Plug-n-Play (PnP) device, the Interrupt and Port address resources are automatically assigned by the Mainboard's PCI PnP BIOS.

The FastTrak100-Lite system resources including port address, interrupt, and BIOS address are **automatically** determined by the system PnP BIOS. To customize IRQ settings, enter the Mainboard BIOS's Advanced PCI setup and follow the manufacturer's procedures. When the system is limited by IRQ resources, the FastTrak100-Lite controller can be set for the same IRQ as other PCI cards that support PCI interrupt sharing.

For the FastTrak100-Lite to be the bootable IDE controller, confirm in the mainboard's BIOS Setup. If there is a "Hard-Disk Drive Sequence," place the FastTrak100-Lite controller as the second choice in searching for a bootable device. No changes are needed for CD-ROM drives that are attached to the mainboard IDE controller.

Creating Your Disk Array

You will now use the FastBuild BIOS utility to create your array using the attached drives. There are three different scenarios in creating this array. You can create an array for performance, you can create a Security array using new hard drives (recommended), or you can create a Security array using an existing hard drive and a new hard drive.



WARNING: If creating a Security array using an existing hard drive, backup any necessary data. Failure to follow this accepted PC practice could result in data loss.

1. Boot your system. If this is the first time you have booted with raid, the FastBuild BIOS will display the following screen.

FastTrak100 (tm) " Lite" BIOS Version 1.xx (Build xxxx)
(c) 1995-2000 Promise Technology, Inc. All Rights Reserved.

No array defined . . .

Press <Ctrl-F> to enter FastBuild (tm) Utility
Or press <ESC> key to continue booting the system.

2. Press <Ctrl-F> keys to display the FastBuild (tm) Utility Main Menu
3. Press "1" to display the Auto Setup Menu below. This is the fastest and easiest method to creating your first array.

FastBuild (tm) Utility 1.xx (c) 1995-2000 Promise Technology, Inc.
[Auto Setup Options Menu]

Optimize Array for: Performance
Typical Application usage: A/V Editing

[Auto Setup Configuration]

Mode..... Stripe
Spare Driver.....0
Drives used in Array.....2
Array Disk Capacity16126

[Keys Available]

[↑] Up [↓] Down [←, →, Space] Change Option [ESC] Exit [Ctrl-Y] Save

Creating an Array for Performance

NOTE: This motherboard allows users to create striped arrays with 1, 2 drives.

To create an array for best performance, follow these steps:

1. Using the Spacebar, choose "Performance" under the **Optimize Array for** section.
2. Select how you will use your PC most under the **Typical Application usage** section. The choices are A/V Editing, Server, and Desktop (the default).
3. Press <Ctrl-Y> keys to Save and create the array.
4. Reboot your system.
5. Once the array has been created, you will need to FDISK and format the array as if it were a new single hard drive.
6. Proceed to Installing Drivers chapter of the manual.

Creating a Security Array With New Drives

NOTE: This motherboard permit only two drives to be used for a single Mirrored array in Auto Setup.

To create an array for data protection using new hard drives, follow these steps:

1. Using the Spacebar, choose "Security" under the **Optimize Array for** section.
2. Press <Ctrl-Y> keys to Save your selection.
3. The window below will appear.

Do you want the disk image to be duplicated to another? (Yes/No) Y - Create and Duplicate N - Create Only

4. Press "N" for the Create Only option.
5. A window will appear almost immediately confirming that your Security array has been created. Press any key to reboot the system

Array has been created. <Press Any Key to Reboot>
--

6. Proceed with normal FDISK and format procedures as if you had just installed a new hard drive.
7. Once the arrayed drives have been formatted, proceed to the **Installing Drivers** chapter. To install your operating system.

Creating a Security Array With An Existing Data Drive

NOTE: This motherboard permits only two drives to be used for a single Mirrored array in Auto Setup.

You would use this method if you wish to use a drive that already contains data and/or is the bootable system drive in your system. You will need another drive of identical or larger storage capacity.



WARNING: Backup any necessary data before proceeding. Failure to follow this accepted PC practice could result in data loss.



WARNING: If you wish to include your current bootable drive using the Windows NT 4.x or Windows 2000 operating system as part of a bootable Mirrored (RAID 1) array on your system, do NOT connect the hard drive to the motherboard controller yet. You MUST install the Windows NT4 or 2000 driver software first to this drive while it is still attached to your existing hard drive controller. For all other Operating Systems, proceed here.

Follow these steps:

1. Using the Spacebar, choose "Security" under the **Optimize Array for** section.
2. Press <Ctrl-Y> keys to Save your selection. The window below will appear.

Do you want the disk image to be duplicated to another? (Yes/No)
 Y - Create and Duplicate
 N - Create Only

3. Press "Y" for the Create and Duplicate option. The window below will appear asking you to select the Source drive to use. FastBuild will copy all data from the Source drive to the Target drive.

Source Disk		
Channel:ID	Drive Model	Capacity (MB)
Target Disk		
Channel:ID	Drive Model	Capacity (MB)
[Please Select A Source Disk]		
Channel:ID	Drive Model	Capacity (MB)
1 :Master	QUANTUMCR8.4A	8063
2 :Master	QUANTUMCR8.4A	8063
[↑] Up [↓] [ESC] Exit [Ctrl-Y] Save		

Raid Introduction

4. Use the arrow keys to choose which drive contains the existing data to be copied.
5. Press [Ctrl-Y] keys to Save selection and start duplication. The following progress screen will appear.

Start to duplicate the image . . .
Do you want to continue? (Yes/No)
Y – Continue N - Abort

6. Select "Y" to continue. If you choose "N" , you will be returned to step 1.
7. Once complete, the following screen will appear confirming that your Security array has been created. Press any key to reboot the system

Array has been created.
<Press Any Key to Reboot>

8. Proceed to the **Installing Drivers** chapter. To install the Raid driver and/or operating system.

Using FastBuild™ Configuration Utility

The FastBuild™ Configuration Utility offers several menu choices to create and manage the drive array on the motherboard. For purposes of this manual, it is assumed you have already created an array in the previous chapter and now wish to make a change to the array or view other options.

Viewing BIOS Screen

When you boot your system with the Raid function and drives installed, the FastBuild BIOS will detect the drives attached and show the following screen.

```
FastTrak100 (tm)" Lite" BIOS Version 1.xx (Build xx)
(c) 1995-2000 Promise Technology, Inc. All Rights Reserved.

Scanning IDE drives . . . . .
```

If an array exists already, the BIOS will display the following screen showing the board RAID BIOS version and status of the array.

```
FastTrak100 (tm) "Lite" BIOS Version 1.xx (Build xxxx)
(c) 1995-2000 Promise Technology, Inc. All Rights Reserved.

  ID      MODE SIZE      TRACK-MAPPING      STATUS
  1 *      1*2 Mirror    16126M  611/128/32      Functional

Press <Ctrl-F> to enter FastBuild (tm) Utility....
```

The array status consists of three possible conditions: *Functional*, *Critical*, *Offline*.

Functional - The array is operational.

Critical - A mirrored array contains a drive that has failed or disconnected. The remaining drive member in the array is functional. However, the array has temporarily lost its ability to provide fault tolerance. The user should identify the failed drive through the FastBuild™ Setup utility, and then replace the problem drive.

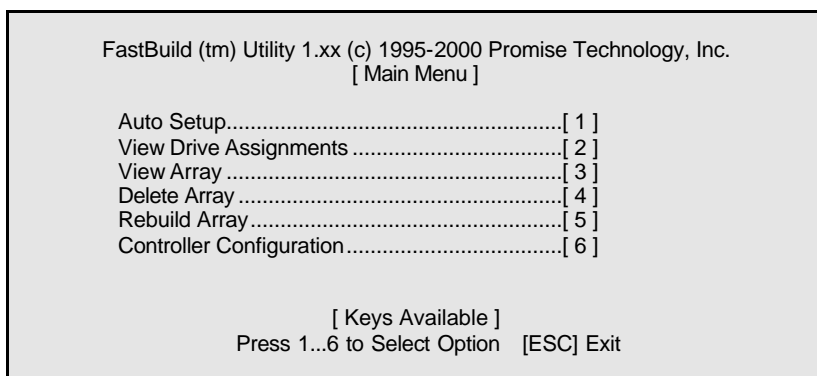
Offline - A striped array has 1 drive that has failed or been disconnected. When the array condition is "offline," the user must replace the failed drive(s), then restore data from a backup source.

Navigating the FastBuild™ Setup Menu

When using the menus, these are some of the basic navigation tips: Arrow keys highlights through choices; [Space] bar key allows to cycle through options; [Enter] key selects an option; [ESC] key is used to abort or exit the current menu.

Using the Main Menu

This is the first option screen when entering the FastBuild™ Setup.



To create a new array automatically, follow the steps under "Creating Arrays Automatically" chapter. We recommend this option for most users.

To view drives assigned to arrays, see "**Viewing Drive Assignments**" chapter.

To delete an array (but not delete the data contained on the array), select "Deleting An Array" chapter.

To rebuild a mirrored array, see "**Rebuilding an Array**" chapter.

To view controller settings, see "**Viewing Controller Configuration**" chapter.



NOTE: After configuring an array using FastBuild, you *should* FDISK and format the arrayed drive(s) if you are using new, blank drives. Depending on the type of array you are using.

Creating Arrays Automatically

The Auto Setup <1> selection from the Main Menu can intuitively help create your disk array. It will assign all available drives appropriate for the disk array you are creating. After making all selections, use Ctrl-Y to Save selections. FastBuild will automatically build the array.

FastBuild (tm) Utility 1.xx (c) 1995-2000 Promise Technology, Inc.
[Auto Setup Options Menu]

Optimize Array for: Performance
Typical Application usage: A/V Editing

 [Auto Setup Configuration]

Mode..... Stripe
Spare Drive Count.....0
Drives used in Array.....2
Array Disk Capacity16126

 [Keys Available]

[↑] Up [↓] Down [←, →, Space] Change Option [ESC] Exit [Ctrl-Y] Save

Optimize Array For

Select whether you want Performance (RAID 0), Security (RAID 1) under the "Optimize Array for" setting.

Performance (RAID 0 Striping)

Supports the maximum performance. The storage capacity equals the number of drives times the capacity of the smallest drive in the disk array.

NOTE: This motherboard permits striped arrays using 1, 2 drive attached in Auto Setup mode.

Security (RAID 1 Mirroring)

Creates a mirrored (or fault tolerant) array for data security.

NOTE: Under the Security setting, This motherboard permits two drives to be used for a single Mirrored array only.

Defining Typical Application Usage

Allows the user to choose the type of PC usage that will be performed in order to optimize how *This motherboard* handles data blocks to enhance performance. Your choice will determine the block size used. You may choose from: A/V Editing (for audio/video applications, or any similar application that requires large file transfers), Server (for numerous small file transfers), or Desktop (a combination of large and small file sizes).

Creating Multiple Disk Arrays

1. If you plan to create multiple arrays, attach only the drives necessary to create the first disk array and complete the <1> Auto Setup.
2. Install the additional drives needed for the second array and again use the <1> Auto Setup.

NOTE: *If you wish to customize the settings of individual disk arrays (such as block size), you must manually create disk arrays with the Define Array <3> option from the Main Menu.*

Viewing Drive Assignments

The View Drive Assignments <2> option in the Main Menu displays whether drives are assigned to a disk arrays or are unassigned.

Under the "Assignment" column, drives are labeled with their assigned disk array or shown as "Free" if unassigned. Such "Free" drives can be used for a future array. Unassigned drives are not accessible by the OS. The menu also displays the data transfer mode that relates to speed used by each drive (U5 refers to 100MB/sec transfers, U4 refers to 66MB/sec transfers, etc...)

FastBuild (tm) Utility 1.xx (c) 1995-2000 Promise Technology, Inc.
[View Drive Assignments]

Channel:	ID	Drive Model	Capacity(MB)	Assignment	Mode
1 :	Master	QUANTUMCR8.4A	8063	Array 1	U5
1 :	Slave	QUANTUMCR8.4A	8063	Free	U5
2 :	Master	QUANTUMCR8.4A	8063	Array 1	U5

[Keys Available]

[↑] Up [↓] Down [ESC] Exit Mode (U=UDMA, P=PIO, D=DMA)

Manually Creating an Array

The Define Array <3> option from the Main Menu allows users to begin the process of manually defining the drive elements and RAID levels for one or multiple disk arrays attached to this motherboard. Users will commonly create one or two drive arrays with the motherboard, though the motherboard will support a maximum of four arrays¹.

NOTE: For most installations, We recommend the <1> Auto Setup for easy disk array creation.

FastBuild (tm) Utility 1.xx (c) 1995-2000 Promise Technology, Inc.				
[Define Array Menu]				
Array No	RAID Mode	Total Drv	Capacity(MB)	Status
Array 1	Stripe	2	16126	Functional
Array 2	—	—	—	—
Array 3	—	—	—	—
Array 4	—	—	—	—
[Keys Available]				
Note: * —Bootable Array				
[↑] Up [↓] Down [ESC] Exit [Enter] Select [Space] Change Boot Drive				

1. To manually create an array from the Define Array Menu, use the arrow keys to highlight the array number you wish to define, and press [Enter] to select.
2. The Define Array Definition Menu will next appear that allows drive assignments to the disk array.

¹ A user may use a single drive in either striping mode with system. In this rare scenario, the motherboard will create an individual array ID but will offer conventional controller performance, depending on the drive type. At a later time, a second drive can be added to the array and the array re-created to support RAID 1 mirroring.

Selecting Array Type

1. Under the Definition section of this menu, highlight the Array # for which you want to assign a RAID level.
2. Use the [Space] key to cycle through three array types: Performance (RAID 0 Striping), Security (RAID 1 Mirroring).

```

FastBuild (tm) Utility 1.xx (c) 1995-2000 Promise Technology, Inc.
[ Define Array Definition Menu ]

Array No  RAID Mode  Total Drv  Capacity(MB)  Status
Array 1    Stripe      2          16126          Functional

Stripe Block:  64 KB

[ Drive Assignments ]

Channel:ID  Drive Model  Capacity (MB)  Assignment
1 :          Master QUANTUMCR8.4A  8063          Y
1 :          Slave  QUANTUMCR8.4A  8063          N
2 :          Master  QUANTUMCR8.4A  8063          Y

[ Keys Available ]

[↑] Up [↓] Down  [ESC] Exit  [Space] Select  [Ctrl-Y] Save

```

Selecting Stripe Block

For RAID 0 Striped arrays only, you may manually select the "stripe block size." Use the Spacebar to scroll through choices progressing as follows (1, 2, 4, 8, 16 . . . 1024).

The size selected affects how motherboard sends and retrieves data blocks from the drives. You will need to perform your own testing to determine how the data block size is affecting your particular use of the array. In general, a larger block size is better when handling large data transfers (such as in AV editing or graphics) while a smaller block size is better when handling e-mail and other common server data. The default is 64K.

Assigning Drive(s) to Array

1. Under the [Drive Assignments] section, highlight a drive using the [↑] Up [↓] keys.
2. With the [Space] key, change the Assignable option to "Y" to add the drive to the disk array.

Raid Introduction

3. Press <Ctrl-Y> to save the disk array information. Depending on the array type selected, the following scenarios will take place:
 - a) If choosing a Striping array, the initial Define Array Menu screen will appear with the arrays defined. From there you may ESC to exit and return to the Main Menu of FastBuild.
 - b) If you selected a Mirroring array for two drives, there is an additional window that appears as described in order to create the array. To do this you will use either two brand new drives, or one drive that contains existing data that you wish to mirror.

Creating A Mirrored Array Using New Drives

As described in the Drive Assignments Option section above, if you selected a mirroring array and wish to use two new assigned drives, follow the directions here.

1. After assigning new drives to a Mirroring array and saving the information with <Ctrl-Y>, the window below will appear.

Do you want the disk image to be duplicated to another? (Yes/No)
Y - Create and Duplicate
N - Create Only

2. Press "N" for the Create Only option.
3. A window will appear almost immediately confirming that your Security array has been created. Press any key to reboot the system

Array has been created.
<Press Any Key to Reboot>

Adding Fault Tolerance to an Existing Drive

This motherboard will create a mirrored array using an existing system drive with data. You must assign the existing drive and another drive of same or larger capacity to the Mirroring array. The BIOS will send the existing data to the new blank drive.



WARNING: Backup any necessary data before proceeding. Failure to follow this accepted PC practice could result in data loss.

WARNING: If you wish to include your current bootable drive using the Windows NT 4.x or Windows 2000 operating system as part of a bootable Mirrored (RAID 1) array on your system, do NOT connect the hard drive to the system controller yet. You MUST install the Windows NT4 or 2000 driver software first (see **Installing Drivers** chapter). to this drive while it is still attached to your existing hard drive controller. For all other Operating Systems, proceed here.

After assigning the drives to a Mirroring array, press <Ctrl-Y> keys to Save your selection. The window below will appear.

Do you want the disk image to be duplicated to another? (Yes/No)
Y - Create and Duplicate
N - Create Only

1. Press "Y" for the Create and Duplicate option. The window below will appear asking you to select the Source drive to use. FastBuild will copy all data from the Source drive to the Target drive.

Source Disk		
Channel:ID	Drive Model	Capacity (MB)
Target Disk		
Channel:ID	Drive Model	Capacity (MB)
[Please Select A Source Disk]		
Channel:ID	Drive Model	Capacity (MB)
1 :Master	QUANTUMCR8.4A	8063
2 :Master	QUANTUMCR8.4A	8063
[↑] Up [↓] [ESC] Exit [Ctrl-Y] Save		

2. Use the arrow keys to choose which drive contains the existing data to be copied.



WARNING: All target drive data will be erased. Make sure you choose the correct drive.

3. Press [Ctrl-Y] keys to Save selection and start duplication. The following confirmation screen will appear.

Start to duplicate the image . . .
Do you want to continue? (Yes/No)
Y - Continue N - Abort

4. Select "Y" to continue. If you choose "N", you will be returned to step 1.
5. Once "Y" is selected, the following progress screen will appear. The process will take a few minutes.

Please Wait While Duplicating The Image

10% Complete

Raid Introduction

- Once mirroring is complete, the following screen will appear confirming that your Security array has been created. Press any key to reboot the system

Array has been created.
<Press Any Key to Reboot>

Making a Disk Array Bootable



WARNING: In order for you to boot from an array on the system, your PC or server must be configured in the CMOS Setup to use the system as a bootable device (versus the onboard controller). This option is not available if the system is being used as a secondary controller.

- Once you have returned to the Define Array Menu window (below), you will see the array(s) you have created. You now may use the menu to select which previously-defined array will be used as the bootable array.

FastBuild (tm) Utility 1.xx DELL (c) 1995-2000 Promise Technology, Inc.
[Define Array Menu]

Array No	RAID Mode	Total Drv	Capacity(MB)	Status
* Array 1	Stripe	2	13044	Functional

Note: * —Bootable Array

[↑] Up [↓] Down [ESC] Exit [Enter] Select [Space] Change Boot Drive

- Highlight the array which you want to boot from using the [↑] Up [↓] Down keys.
- Press the [Space] bar key.
- An * asterisk will appear next to the array number indicating it as bootable. The system will now recognize this array as the first array seen
- The system will then use this bootable array as the (fixed) boot C: drive.

NOTE: The bootable array must contain your configured operating system.

How FastTrak100-Lite Orders Arrays

During startup, the disk arrays on the motherboard are recognized in this order: 1) The array set to bootable in the FastBuild™ Setup, and 2) the Array number (i.e. Array 0, Array 1...). This would be involved in determining which drive letters will be assigned to each disk array.

How FastTrak100-Lite Saves Array Information

All disk array data is saved into the reserved sector on each array member. We suggest that users record their disk array information for future reference.

Another feature of the motherboard disk array system is to recognize drive members even if drives are moved between different motherboard connectors (IDE3&IDE4). Since each drive's array data identifies itself to the array, it is possible to move or swap drives without modifying the array setup. This is valuable when adding drives, or during a rebuild.

Deleting An Array

The Delete Array <4> Menu option allows for deletion of disk array assignments. This is not the same as deleting data from the drives themselves. If you delete an array by accident (and before it has been used again), the array can normally be recovered by defining the array identically as the deleted array.



WARNING: Deleting an existing disk array could result in its data loss. Make sure to record all array information including the array type, the disk members, and stripe block size in case you wish to undo a deletion.

FastBuild (tm) Utility 1.xx (c) 1995-2000 Promise Technology, Inc.				
[Delete Array Menu]				
Array No	RAID Mode	Total Drv	Capacity(MB)	Status
Array 1	Mirror	2	16126	Functional
Array 2	Stripe	1	8063	Functional
Array 3	Stripe	1	8063	Functional
Array 4	—	—	—	—
[Keys Available]				
[↑] Up [↓] Down [ESC] Exit [Del] Delete				

1. To delete an array, highlight the Array you wish to delete and press the [Del] key.
2. The View Array Definition menu will appear (see below) showing which drives are assigned to this array.

FastBuild (tm) Utility 1.xx (c) 1995-2000 Promise Technology, Inc. [Define Array Menu]				
Array No	RAID Mode	Total Drv	Capacity(MB)	Status
Array 1	Mirror	2	8063	Functional
Stripe Block: 64 KB				
[Drive Assignments]				
Channel:ID	Drive Model	Capacity (MB)	Assignment	
1 : Master	QUANTUMCR8.4A	8063	Y	
2 : Master	QUANTUMCR8.4A	8063	Y	

- Confirm yes to the following warning message with the <Ctrl-Y> key to continue array deletion:

Are you sure you want to delete this array? Press Ctrl-Y to Delete, others to Abort
--

- After deleting the array, you should create a new array using Auto Setup or the Define Array menu from the FastBuild Main Menu.

Rebuilding A Mirrored Array

The Rebuild Array <5> Menu option is necessary to recover from an error in a mirrored disk array. You will receive an error message when booting your system from the BIOS.

NOTE: Drives *MUST* be replaced if they contain any physical errors.

Follow these steps BEFORE using the Rebuild Array menu option:

1. On bootup, the system Startup BIOS will display an error message identifying which drive has failed.
2. Press <Ctrl-F> keys to enter FastBuild Main Menu.
3. Select submenu Define Array <3>.
4. Select the failed array and identify the Channel and ID of the failed drive.
5. Power off and physically remove the failed drive.
6. Replace the drive with an identical model.
7. Reboot the system and enter the FastBuild Main Menu.
8. Select the <5> Rebuild Array option. The following screen will appear.

FastBuild (tm) Utility 1.xx (c) 1995-2000 Promise Technology, Inc. [Rebuild Array Menu]				
Array No	RAID Mode	Total Drv	Capacity(MB)	Status
Array 1	Mirror	2	8063	Critical
Array 2	Stripe	1	8063	Functional
Array 3	Stripe	1	8063	Functional
Array 4	—	—	—	—
[Keys Available]				
[↑] Up [↓] Down [ESC] Exit [Enter] Select				

9. Highlight the array whose Status is "Critical".
10. Press [Enter]. The following screen will then appear.

FastBuild (tm) Utility 1.xx (c) 1995-2000 Promise Technology, Inc.
[Rebuild Array Menu]

Array No	RAID Mode	Total Drv	Status
Array 1	Mirror	2	Critical

Stripe Block: Not Available
[Select Drive for Rebuild]

Channel:ID	Drive Model	Capacity (MB)
1 : Slave	QUANTUMCR8.4A	8063

[Keys Available]

[↑] Up [↓] Down [ESC] Exit [Enter] Select

- Under [Select Drive for Rebuild], highlight the replacement drive.
- Press [Enter] and confirm that the data will be copied on to the selected drive. All data on the replacement drive will be written over with mirrored information from the array drive. A progress bar will appear as below.

Please Wait While Duplicating The Image

10% Complete

- Once the rebuild process is complete, the user will be asked to reboot the system.

Viewing Controller Settings

The Controller Configuration <6> menu selection allows you to enable or disable the BIOS FastTrak100-Lite from halting (the default) if it detects an error on boot up. You may also view the system resources (Interrupt and I/O port address) of FastTrak100-Lite data channels.

FastBuild (tm) Utility 1.xx (c) 1995-2000 Promise Technology, Inc.	
[Adapter Configuration - Options]	
Halt On Error: Enable	
[System Resources Configuration]	
Channel 1 (IDE3)	Interrupt : A I/O Port : FFF0
Channel 2 (IDE4)	Interrupt : A I/O Port : FFA8
[Keys Available]	
[←, →, Space] Change Option [ESC] Exit	

Halting FastTrak100-Lite BIOS On Bootup Errors

The [Adapter Configuration – Options] section allows you to enable or disable The system to Halt operation at the BIOS startup screen should an error be detected. This is the only option that can be changed on this screen.

Viewing FastTrak100-Lite System Resources

The [System Resources Configuration] section of this submenu displays the PCI slot interrupt and port address used by the system. The resources used are determined by the Mainboard PCI PnP BIOS for the PCI slot in which the system resides.

In the rare case that there is a resource conflict, refer to the Mainboard BIOS documentation on changes on resources allocated to the system PCI slot.

Installing Drivers

This section details the FastTrak100-Lite driver installation when used with various operating systems. The software includes the driver necessary to identify FastTrak100-Lite to the operating system.

Windows 2000

Installing Driver During New Windows 2000 Installation

Note: Before the Windows 2000 installing, please copy the whole files in the folder as follows "other\promise\ideRAID\win2000\" of the TUCD (Support CD came with the M/B) to a floppy disk.

1. CD-ROM Install: Boot from the CD-ROM. Press <F6> after the message "Press F6 if you need to install third party SCSI or RAID driver" appears.
2. When the "Windows 2000 Setup" window is generated, press "S" to Specify an Additional Device(s)
3. Insert the Driver diskette into driver A: and press "Enter" key.
4. Choose "Win2000 FastTrak100-Lite Controller" from the list that appears on screen, then press the "Enter" key.
5. The Windows 2000 Setup screen will appear again saying "Setup will load support for the following mass storage devices:" The list will include "Win2000 FastTrak100-Lite controller"..

NOTE: *If you need to specify any additional devices to be installed, do so at this time. Once all devices are specified, continue to step 6.*

6. From the Windows 2000 Setup screen, press the Enter key. Setup will now load all device files and then continue the Windows 2000 installation.

Installing Driver in Existing Windows 2000 System



WARNING: *If you will be moving the boot drive containing the existing Windows 2000 operating system to a mirrored RAID 1 array on the FastTrak100-Lite, the FastTrak100-Lite driver MUST be loaded to the hard drive while it is still attached to your existing hard drive controller. Do not attach this drive or any other hard drive to the FastTrak100-Lite controller before completing this step.*

After installing the FastTrak100-Lite and rebooting your system, Windows 2000 setup will show a "New Hardware Found" dialog box. Under Windows 2000, the "PCI RAID Controller" will be displayed.

1. In the dialog box, choose "Driver from disk provided by hardware manufacturer" button.
2. Insert the "TUCD" CD into the your CD-ROM Drive.
3. Type "D:\other\Promise\ideRAID\WIN2000" in the text box. Press "Enter".
4. Choose "Win2000 FastTrak100-Lite Controller" from the list that appears on screen, then press the "Enter" key.
5. The Windows 2000 Setup screen will appear again saying "Setup will load support for the following mass storage devices – Win2000 FastTrak100-Lite controller". The FastTrak100-Lite driver will now be copied on to the system and entered into the Windows 2000 driver database.
6. When the "System Settings Change" dialog box appears, remove the floppy diskette and click on "Yes" to restart the system. Windows 2000 will then restart for the driver installation to take effect.
7. Power off your system, then attach your hard drives to the connector of FastTrak100-Lite controller.

Confirming Windows 2000 Installation

1. From Windows 2000, open the Control Panel from "My Computer" followed by the System icon.
2. Choose the "Hardware" tab, then click the "Device Manager" tab.
3. Click the "+" in front of "SCSI & RAID Controllers hardware type." The driver "Win2000 FastTrak/FastTrak100-Lite Controller" should appear.

Windows 9X/ME

Installing Drivers During Windows 98/ME Installation

The following three sections detail the installation of the FastTrak100-Lite drivers while installing Windows 9X/ME (with the FastTrak100-Lite controller already in place). If you're installing the FastTrak100-Lite drivers on a system with Windows 9X/ME already installed, see **Installing Drivers with Existing Windows 9X/ME**.

Windows 9X/ME

1. Enabled the FastTrak100-Lite controller and configuring the hard drive(s), partition and format your hard drive(s), if necessary.
2. Install Windows 98 normally.
3. After installation, go the "Start" menu and choose "Settings."
4. From the "Settings" menu, choose "Control Panel."
5. In the "Control Panel" window, double-click on the "System" icon.
6. In the "System" window, choose the "Device Manager" tab.
7. In the hierarchical display under "Other Devices" is a listing for "PCI RAID Controller." Choose it and then press the "Properties" button.
8. Choose the "Driver" tab in the "Properties" window, choose "Update Driver," and then press "Next."
9. Choose "Search for a better driver than the one your device is using now (recommended)," then press "Next."
10. Choose "Specify Location," and then type "D:\other\Promise\ideRAID\WIN9X-ME" in the text box.
11. Insert the "TUCD" CD into the your CD-ROM Drive.
12. Press the "Next" button. A message informing you that Windows 98 has found "Win9X-ME FastTrak100-Lite (tm) Controller" should appear.
13. Press "Next," then "Finish," then "Yes" when asked if you want to restart your computer.

Windows 95

1. Enabled the FastTrak100-Lite controller and configuring the hard drives, partition and format your hard drive(s), if necessary.
2. Install Windows 95 normally.
3. After installation, go to the "Start" menu and choose "Settings."
4. From the "Settings" menu, choose "Control Panel."
5. In the "Control Panel" window, double-click on the "System" icon.
6. In the "System" window, choose the "Device Manager" tab.
7. In the hierarchical display under "Other Devices" is a listing for "PCI Mass Storage Controller." Choose it and then press the "Properties" button.
8. Choose the "Driver" tab in the "Properties" window, and then press the "Update Driver" button.
9. When asked if you want Windows to search for the driver, choose "Yes (recommended)."
10. Insert the "TUCD" CD into the your CD-ROM Drive., then press "Next."
11. When Windows informs you that it was unable to find the drivers, press "Other Locations..."
12. In the "Select Other Location" dialog box, type "D:\other\Promise\ideRAID\WIN9X-ME".
13. Press the "Next" button. A message informing you that Windows 95 has found "Win9X-98 FastTrak100-Lite (tm) Controller" should appear.
14. Press "Finish."
15. Choose "Yes" when asked if you wish to restart the system.

Installing Drivers with Existing Windows 9X/98

The following three sections detail the installation of FastTrak100-Lite drivers on a system that has Windows 95/98 already installed. If you're installing the FastTrak100-Lite drivers on a system during a Windows 95/98 installation, see **Installing Drivers During Windows 95/98 Installation** chapter.

Windows 9X/ME

1. Enable the FastTrak100-Lite controller and configuring the hard drives, power up the system and boot Windows.
2. The "Add New Hardware Wizard" will appear, informing you that it has found a "PCI RAID Controller."
3. Check the "Search for the best driver for your device" box and click the Next button.
4. Check the "Specify a Location" box and click Next button.
5. Type "D:\other\Promise\ideRAID\WIN9X-ME" in the text box that appears.
6. Insert the "TUCD" CD into the your CD-ROM Drive.
7. Click on "Next." The Add New Hardware wizard will say it has found "Win9X-ME FastTrak100-Lite controller".
8. Click on "Next," and then on "Finish."
9. Choose "Yes" when asked if you want to restart your computer.

Windows 95

1. After installing the Ultra100 controller and configuring the hard drives, power up the system and boot Windows.
2. The "Update Device Drive Wizard" will appear, informing you that it has found a "PCI Mass Storage Controller."
3. Insert the "TUCD" CD into the your CD-ROM Drive.
4. Type "D:\other\Promise\ideRAID\WIN9X-ME" in the text box, then click on "Next." Windows will inform you that it has found the "Win9X-ME FastTrak100-Lite controller".
5. Click on "Finish," and when prompted to insert the "FastTrak100-Lite Driver" diskette, click on "OK."
6. Choose "Yes" when asked whether you want to start your computer.

Confirming Driver Installation in Windows 9X/ME

To confirm that the driver has been properly loaded in Win 95/98, perform the following steps:

1. Choose "Settings" from the "Start" menu.
2. Choose "Control Panel," and then double-click on the "System" icon.
3. Choose the "Device Manager" tab, and then click the "+" in front of "SCSI & RAID controllers." "Win9X-ME FastTrak100-Lite controller" should appear

Windows NT4

Installing Drivers During Windows NT 4.0 Installation

1. Start the system installation by booting from the Windows NT disk:

CD-ROM disk install: boot from the CD-ROM disk and press the "F6" key when the message "Setup is inspecting your computer's hardware configuration..." appears.
2. When the "Windows NT Setup" window is generated, press "S" to Specify an Additional Device(s).
3. Press "O" to select "Other" and press the "Enter" key.
4. Insert the "TUCD" CD into the your CD-ROM Drive, and press the "Enter" key.
5. Choose "Win NT FastTrak100-Lite (tm) Controller" from the list that appears on screen, then press the "Enter" key.
6. The Windows NT Setup screen will appear again saying "Setup will load support for the following mass storage devices:" The list will include "Win NT FastTrak100-Lite (tm) controller".

***NOTE:** If you need to specify any additional devices to be installed, do so at this time. Once all devices are specified, continue to step 7.*
7. From the Windows NT Setup screen, press the Enter key. Setup will now load all device files and then continue the Windows NT installation.
8. After a successful installation, the "SCSI Adapter Setup" box will show that the "Win NT FastTrak100-Lite (tm) Controller" driver has been installed.

Installing Driver with Existing Windows NT 4.0



WARNING: *If you plan to move your boot drive to a mirrored RAID 1 FastTrak array, hard drives should NOT be connected to the FastTrak100-Lite controller before performing the following procedure. The FastTrak100-Lite drivers must be loaded on the system hard drive (running under the existing hard drive controller) before any hard drives are connected to the FastTrak100-Lite controller.*

1. Choose "Settings" from the "Start" menu.
2. Choose "Control Panel" from the "Settings" menu.
3. Double-click on the "SCSI Adapters" icon, which generates the "SCSI Adapters" dialog box.
4. Choose "Drivers," and then press "Add."
5. In the "Install Drivers" dialog box, press "Have Disk..."
6. When the "Install From Disk" appears, Insert the "TUCD" CD into the your CD-ROM Drive.
7. Type "D:\other\Promise\ideRAID\NT4" in the text box window, then choose "OK."
8. When the "Install Driver" dialog box appears, select "Win NT FastTrak100-Lite Controller" and then press "OK."
9. When the "Select SCSI Adapter Option" dialog box appears, press "Install."
10. After a successful installation, the "SCSI Adapter Setup" box will show that the "Win NT FastTrak100-Lite Controller" has been installed.
11. Power off your system.
12. If moving the boot drive to the FastTrak100-Lite, now attach the hard drives otherwise reboot.

Removing the Driver from Windows NT 4.x

1. In "Start" Button choose "Control Panel" in "Setup" group.
2. In "Control Panel," select "SCSI Adapter," next choose "Drivers" label
3. Choose "Remove" button.
4. After successful removing, the "SCSI Adapter Setup" box will show that "Win NT FastTrak100-Lite RAID Controller" has been removed.

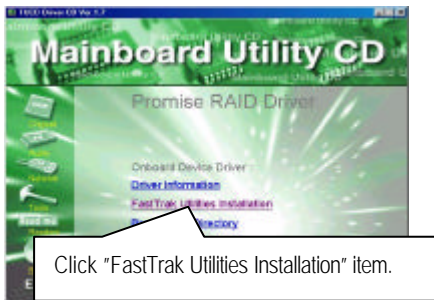
Using The FastCheck™ Monitoring Utility

You can monitor the operating status of all arrays and drives configured on the FastTrak100-Lite using the supplied FastCheck monitoring utility for Windows-based operating systems. FastCheck generates visual and audible messages alerting you of possible problems with the disk array or controller.

FastCheck visually identifies the physical location of attached drives on the FastTrak100-Lite by IDE channel (3 or 4) and setting (Master/Slave/Cable-Select). It also displays which drives are included as part of individual arrays. Administrators can customize FastCheck to maintain operating logs and event notification, set Password access to the utility, and schedule maintenance on Mirrored (RAID 1) arrays.

Installing FastCheck

1. Insert "Driver CD" Diskette.
2. Click "FastTrak Utilities Installation".



3. Follow the directions from the setup program.
4. During installation, click YES when prompted to run the utility on every startup. If NO is selected, FastCheck will not initialize during startup. You may manually execute the utility via the Start button.

NOTE: We recommend to have FastCheck load during Startup. This insures you that it will be ready to post alerts on errors.

Running FastCheck

As described in the Installation section, the default option for FastCheck is to load during startup of Win9X/ME/NT/2000. It appears minimized on the taskbar under Win 95 / 98 / ME /NT4 /2000 / Millennium (see below).



To start FastCheck, double-click on the FastCheck icon on the taskbar (above) or you may also use the Taskbar Start/Promise/FastTrak/FastCheck menus shown below.



Closing FastCheck

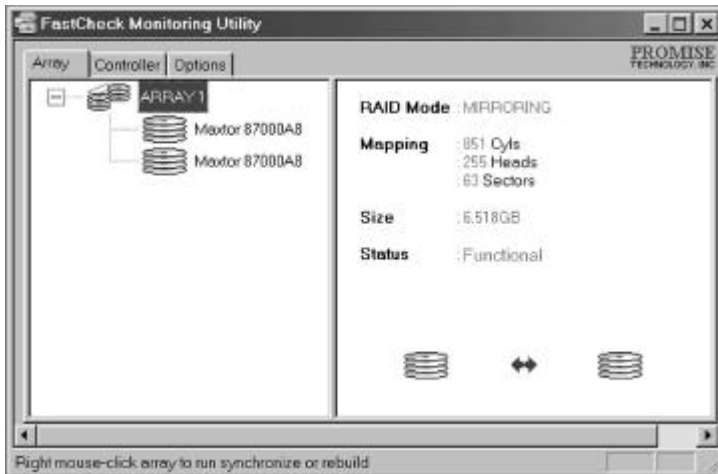
Once FastCheck is opened (either automatically on startup or manually), the monitoring utility remains running in the background even if the user "closes" the FastCheck window.

To completely shut down FastCheck, perform the following steps.

1. Right-click the FastCheck icon on the Taskbar.
2. Select Exit from the pop-up window.
3. FastCheck will no longer be running and will no longer be monitoring the array.

Using FastCheck Array Window

Once FastCheck is selected, the FastCheck Monitoring Utility window will appear. The main pane has three information window tabs: Array, Controller, and Options. The user can switch screens by clicking on the tab. The Array Window is the active screen by default as shown below:



The Array Window displays information about the arrays configured on your FastTrak100-Lite through the FastBuild BIOS. From this window, you can also perform data Synchronization of mirrored arrays, or Rebuild data from one drive to a replacement drive within a mirrored array.

While the Array Window does not allow you to change the array configurations directly, it clearly identifies which drives are associated with each array shown in the left pane.

Viewing Array Information

By left-clicking on the Array #, the right pane shows the following information categories for that array:

RAID mode: (Striping, Mirroring, Mirroring & Striping)

Mapping: (similar to physical drive specifications) describing # of cylinders, heads, and sectors of the array's "virtual" drive as seen by the system

Size: Storage capacity of the array

Status: (Functional, Critical, Offline)

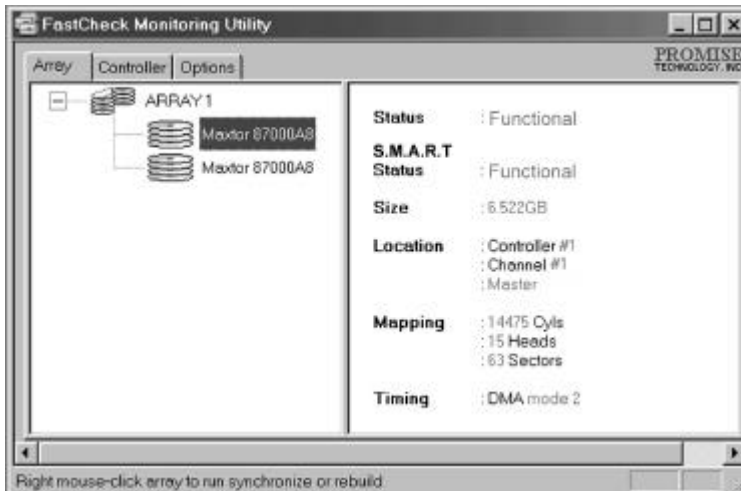
Functional: Means the array is providing full functionality

Critical: Used only in reference to a Mirroring array (RAID 1). A problem has been detected in one of the drives of the array and the drive has been taken "offline." However, a "critical" array will continue to save and retrieve data from the remaining working drive(s). We recommend replacing the failed drive as soon as possible since a "Critical" array offers no data redundancy.

Offline: This would appear most commonly within a RAID 0 array. The "Offline" results from a drive having failed which has taken the entire array "offline." In this case, you have likely lost data. Fix/replace the drive that has failed, then restore data from a backup source.

Viewing Arrayed Drive Information

By left-clicking on a drive member of an array in the left pane, the right pane shows the following information categories for that drive:



Status (also shown under the Array Window) can be Functional, Critical, or Offline. The meanings are shown below.

Functional: Means the drive is working normally

Critical: A problem has been detected in the drive and the drive taken offline as part of a mirroring array. Mirrored arrays will continue to function without the drive. Fix/replace the drive that has failed, then restore data from a backup source.

Raid Introduction

Offline: Drives that are NOT identified as “bad” may be taken offline if part of a Striping array containing a “bad” drive. These drives do NOT need to be replaced, however.

S.M.A.R.T. Status: Indicates whether attached hard drive implements Self-Monitoring Analysis & Reporting Technology to predict drive failure

Size: Indicates capacity of individual drive

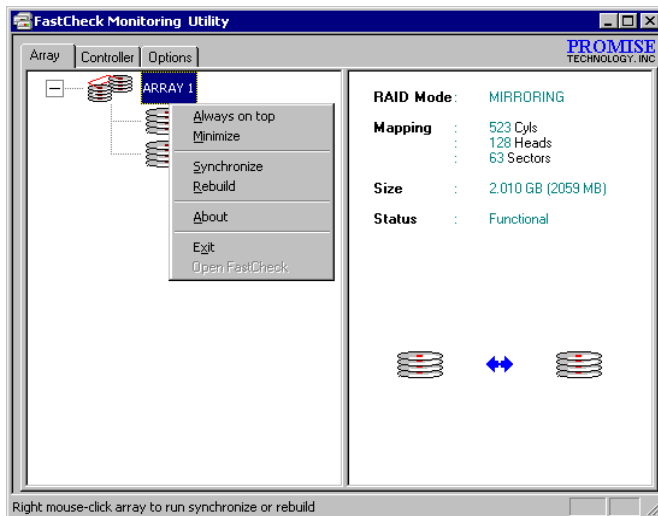
Location: Shows physical location of drive. Indicates on which IDE channel (3 or 4), and whether drive is Master or Slave on cable. This allows user to identify drives for removal/replacement.

Mapping: Indicates physical parameters of drive (cylinders, heads, sectors)

Timing: Shows selection of drive timing (directly related to burst speed) based on type of drive and cable used.

Using Array Pull-down Menu

At the bottom of the Array window, it indicates to right-click on an Array to perform synchronization or rebuild operations. Right-clicking displays the following pull-down menu:



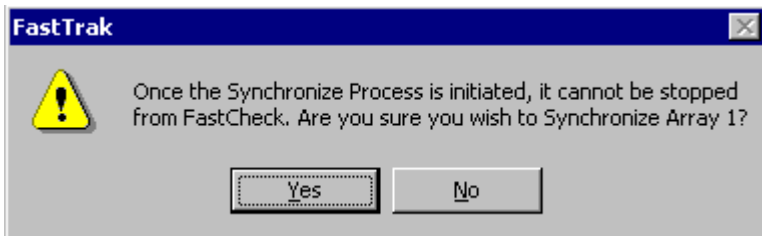
From this menu, users may choose to have the Window Always **Appear** on Top of applications, **Minimize**, **Synchronize** mirrored drives, **Rebuild** a mirrored array, use **About** to check FastCheck version #, or **Exit** the onscreen window.

Synchronizing An Array

Synchronization is a periodic maintenance procedure for Mirroring (RAID 1) arrays to maintain data consistency on all mirrored drives. In operation, array synchronization compares data on the mirrored drives for any differences. If there are differences detected, data from the primary drive(s) is automatically copied to the secondary drive(s). This assures that all mirrored drives will contain the exact information.

NOTE: You may instead choose to schedule array synchronization automatically under the Options Tab view versus manually initiating synchronization.

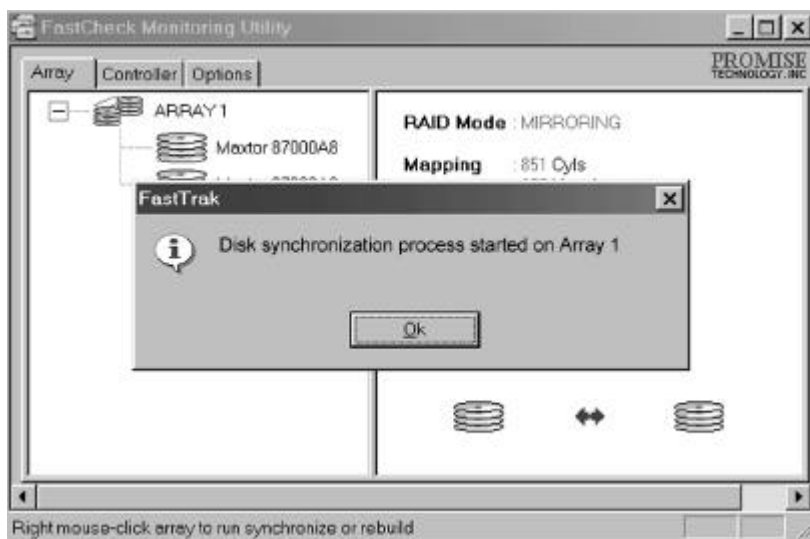
1. To synchronize, choose the Array Tab View (see figure on previous page).
2. Right-click on the array you wish to synchronize and choose "Synchronize" from the context menu.
3. Click "Yes" to initiate Synchronization (see below) when the Confirmation window appears. To cancel this option, click the No button.



WARNING: Once initiated, synchronization can NOT be halted in order to prevent data errors.

Raid Introduction

4. Once Synchronization is confirmed, the following information screen appears. Click OK button or close the window to proceed.



NOTE: During Array Synchronization, users may continue to access the working array and perform normal PC functions. However, system performance will be slightly degraded and the process will take longer.

5. A progress bar will appear at the bottom of the FastCheck Monitoring window showing synchronization in progress and the percentage that has been completed.



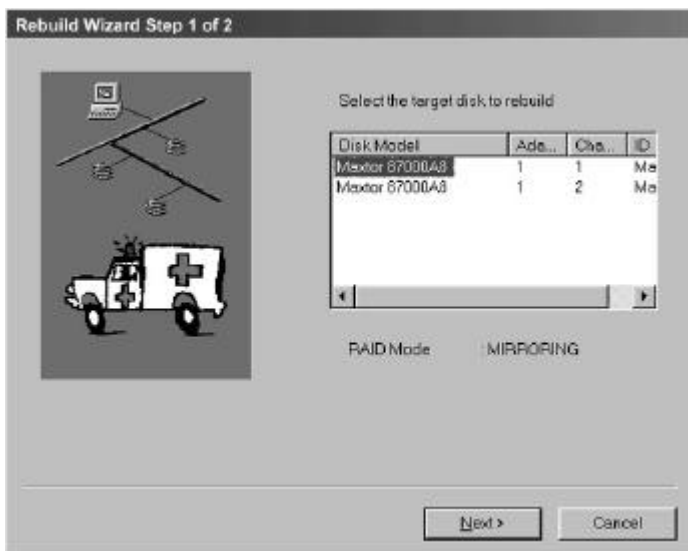
Rebuilding An Array

This command effectively copies or overwrites data from an existing data drive in the array on to a blank drive. The operation will be typically used when a failed drive has been replaced with a new drive as part of a mirrored array.

1. To perform a Rebuild, choose the Array Tab View.
2. Right click the array number and choose Rebuild from the context menu.
3. Once Rebuild is selected, you will be asked to "Initialize Rebuild process on Array #" by clicking OK.

Using Rebuild Wizard

1. Initiating rebuild array will open the Rebuild Wizard Step 1 screen shown below.
2. Select the Target drive which will receive data. Make sure you select the blank new or replacement drive. The unselected drive will contain "good" data. It will be the remaining working drive of an array, or a system drive containing existing data that you wish to mirror.



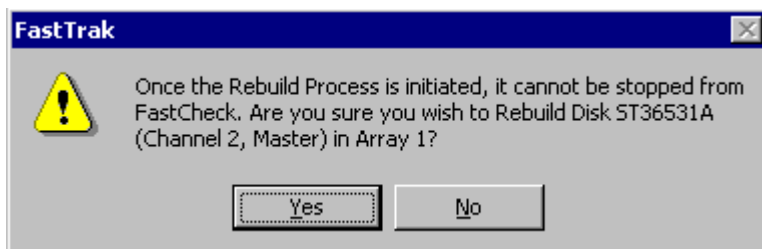
WARNING: Make absolutely sure and double-check which drive is which. If data exists on the target drive, it will be over-written.

Raid Introduction

- Click the Next button to proceed to Rebuild Wizard Step 2 or Cancel button to stop.



- Rebuild Wizard Step 2 confirms the Target or "Rebuild" disk by Array # and drive ID.
- Click Finish button to initiate physical Rebuild, Back button to review Step 2, or Cancel button to Stop. A final confirmation window appears as below:



- Click "Yes" to initiate Rebuild. To cancel this option, click the No button.



WARNING: Once initiated, Array Rebuild can NOT be halted in order to prevent data errors.

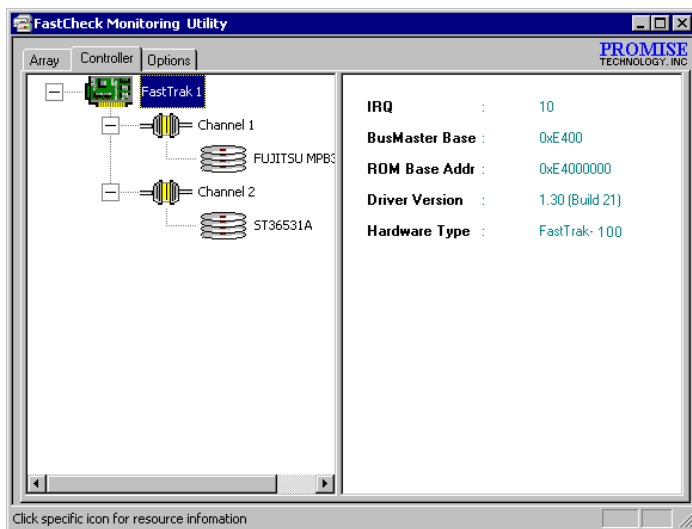
NOTE: During Array Rebuild, users may continue to access the array and perform normal PC functions however the array will NOT provide data redundancy until Rebuild is completed. If you choose to continue using the PC during rebuild, system performance will be slightly degraded and the process will take longer.

6. Once Array Rebuild has begun, users are returned to the FastCheck Monitoring window. A progress bar showing the rebuild progress in percentage will appear at the bottom of the FastCheck Monitoring window.



Using Controller Window

Clicking on the Controller tab, will reveal the Controller Window. This displays physical information about the location of FastTrak100-Lite, data channels on the motherboard, and the attached drives.



Viewing Controller Information

By left-clicking on the FastTrak controller icon, the right pane shows the following information categories for that array:

IRQ: Identifies interrupt request assigned to PCI slot

Bus Master Base: Shows base address in hex numbering for board's bus master Input/Output function

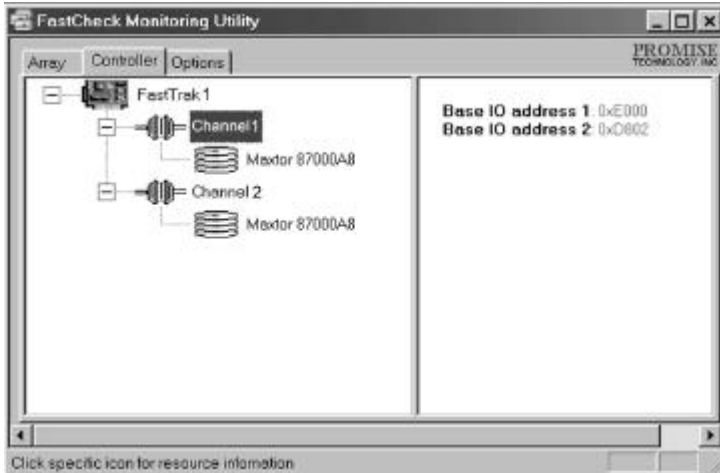
ROM Base Address: Shows base address in hex numbering for FastTrak's Flash ROM chip

Driver Version: Identifies which version of the FastTrak100-Lite driver you have installed.

Hardware Type: Identifies which FastTrak product is installed.

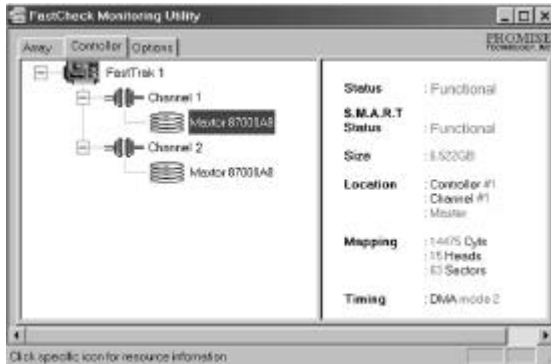
Viewing IDE Channel Information

Left-clicking on a given Channel icon or # in the left pane, will show the Base IO addresses of the channel in the right pane (used for troubleshooting).



Viewing Drive Information

Left-clicking on a given Drive icon or ID in the left pane, will show similar information categories as the Array Window Drive Information in the right pane.



Status (also shown under the Array Window) can be Functional, Critical, or Offline. The meanings are shown below.

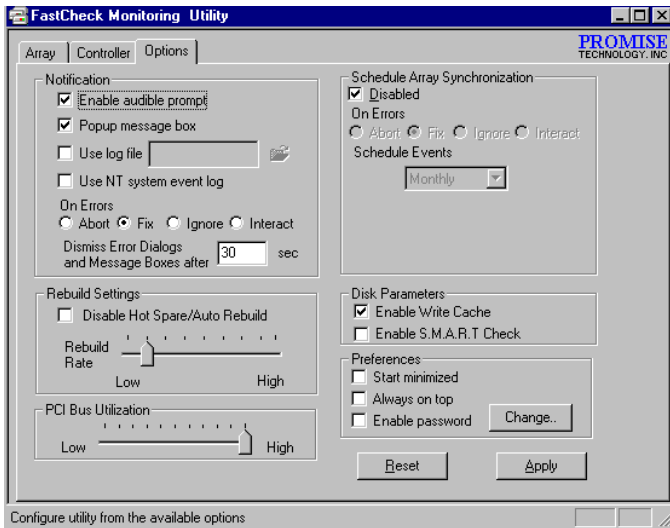
Functional: Means the drive is working normally

Critical: A problem has been detected in the drive and the drive taken offline as part of a mirroring array. Mirrored arrays will continue to function without the drive. Fix/replace the drive that has failed, then restore data from a backup source.

Offline: Drives that are NOT identified as "bad" may be taken offline if part of a Striping array containing a "bad" drive. These drives do NOT need to be replaced, however.

S.M.A.R.T. Status: Indicates whether attached hard drive implements Self-Monitoring Analysis & Reporting Technology to predict drive failure

Size: Indicates capacity of individual drive



Location: Shows physical location of drive. Indicates on which IDE channel (3 or 4), and whether drive is Master or Slave on cable. This allows user to identify drives for removal/replacement.

Mapping: Indicates physical parameters of drive (cylinders, heads, sectors)

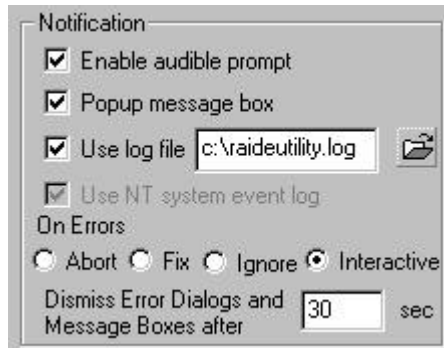
Timing: Shows selection of drive timing (directly related to burst speed) based on type of drive and cable used.

Using Options Window

Clicking on the Options tab reveals the Options Window. Array administrators can customize the FastCheck Monitoring Utility in four major areas: Notification, Array Synchronization Scheduling, setting Password, Desktop Appearance. Most options relate to Mirroring arrays (RAID 1).

Selecting Notification Options

This section of the Options windows allows users to select how they are notified of a system event. A System Event includes driver-initiated Rebuilds, user-initiated manual Rebuilds or manual Synchronization, and Error-Handling reporting for these processes.



Enable audible prompt checkbox turns on/off an audible alarm of an event (typically a drive failure, or completion of rebuild or synchronization).

Popup message box checkbox turns on/off the appearance of an event message box that would typically indicates a drive failure, or completion of rebuild or synchronization.

Use log file checkbox allows writing operating event logs of the array activity (alerts and status reports) to a given file name and directory. If a file name is used but the path left blank, the default directory is the same as the FastCheck Utility (typically C:\Program Files\Promise\FastTrak100-Lite).

Use NT system event log checkbox is greyed out under Windows 95/98/2000/Millennium automatically. Under Windows NT4, it permits user to write array logging to NT's own event log.

1. To view FastCheck events under Windows NT, go to Start/Programs/Administrative Tools/Event Viewer.
2. In the Event Viewer, choose "Log" from the menu bar, then check "Application." Any events generated by FastCheck will appear under the Source column as "FastCheck."

On Errors section offers four radio button choices for the user to select what procedure they would like to perform if an Error is detected during automatic/manual Rebuilds or manual Synchronization. There are three types of errors that FastTrak100-Lite detects -- a data mismatch between the primary and secondary drive, a physical media error on source or target drive, or a total disk failure. The options for handling Errors are as follows:

Abort: stops any Synchronization or Rebuild process if an error is encountered.

Fix: in most cases, FastTrak100-Lite automatically can correct errors. The method of correction varies depending on the type of error.

Ignore: FastTrak100-Lite will log the event error and continue the rebuild or synchronization process. Use this setting if you want to detect the presence of errors, but do not want to fix these errors at the time. The user may then decide what to do about the error(s) detected.

WARNING: *This may result in mismatched drives under RAID 1 .*



Interactive: By checking this option, a selection window will appear each time an error is detected asking the user whether they want to Abort, Fix, or Ignore the error (see **Troubleshooting** section).

Dismiss Error Dialogs designates the length of time (in seconds) that a Message box or Error Dialog box appears on screen.

Scheduling Array Synchronization

This section of the Options Window allows a user to schedule when and how often FastTrak100-Lite will perform synchronization maintenance of a mirrored array .

Disable checkbox is checked (the default) to turn off automated scheduling of synchronization. When unchecked, the Scheduling section will be highlighted.

On Errors section offers four radio button choices for the user to select what procedure they would like to perform if an Error is detected during a scheduled Synchronization. There are three types of errors that FastTrak100-Lite detects -- a data mismatch between the primary and secondary drive, a physical media error on source or target drive, or a total disk failure. The options for handling Errors are as follows:

Abort: stops the Synchronization process if an error is encountered.

Fix: in most cases, FastTrak100-Lite automatically can correct errors. The method of correction varies depending on the type of error (see Appendix under Error Correction Methodology).

Ignore: FastTrak100-Lite will log the event error and continue the synchronization process. (Warning: this may result in mismatched drives under RAID 1). Use this setting if you want to detect the presence of errors, but do not want to fix these errors at the time. The user may then decide what to do about the error(s) detected.

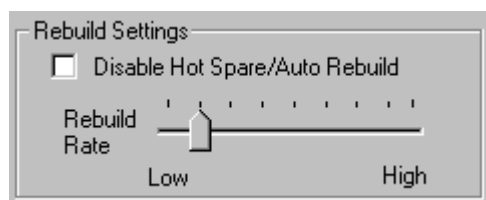
Interactive: By checking this option, a selection window will appear each time an error is detected asking the user whether they want to Abort, Fix, or Ignore the error (see **Troubleshooting** for more details).

Schedule event drop down box allows scheduling synchronization by minute, by hour, by day, by week, or by month. If enabled, the default is By Month. This allows synchronization to take place during an off-hour when the system is either not in use or not at peak demand.

Start time designates hr/min/ am/pm

On the designates day of week or by ordinal (1st, 2nd, 3rd....) selection.

Setting Rebuild Options



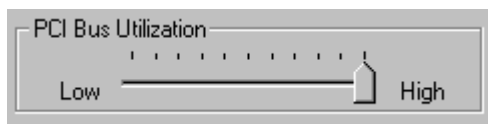
Disable Hot Spare/Auto Rebuild checkbox turns off the use of a "hot" spare drive and automatic rebuilding of a mirrored array. The default is unchecked (or enable Hot Spare/Auto Rebuild).

Rebuild Rate assigns the amount of importance that FastTrak100-Lite gives to mirroring data from one drive to another in the background. A "high" setting assigns most of FastTrak100-Lite's resources to the rebuild process at the expense of responding to ongoing read/write data requests by the operating system. A "low" setting gives priority to ongoing read/write data requests by the operating system at the expense of the rebuild process and will typically result in longer rebuild times.

Setting PCI Bus Utilization Option

NOTE: In most cases, a user does not need to change this setting since FastTrak100-Lite's data handling rarely conflicts with another PCI device. However, certain brands of video capture can produce a "glitch" on play back of A/V files that may require adjusting the default setting devices (see *Tips for Audio/Video Editing* for more information).

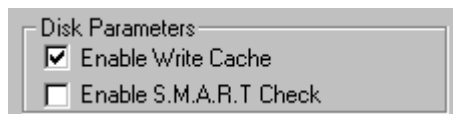
This section of the Options Window allows a user to change how much time the FastTrak100-Lite holds on to the PCI bus to transfer data.



The default setting of "High" on the slider bar means FastTrak100-Lite holds on to the PCI bus longer for data transfers to occur. A setting of "Less" reduces the time which FastTrak100-Lite occupies on the PCI bus and frees that time for use by other PCI devices.

Once a bus setting has been selected, click the Apply button on the Options window to implement changes immediately.

Setting Disk Param(eters) Option

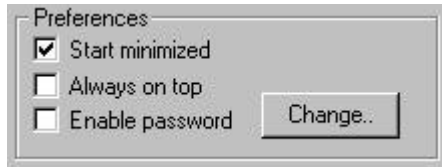


Enable Write Cache checkbox allows user to enable/disable write cache for hard drives that include this performance feature. FastCheck automatically recognizes such drives and enables the feature as the default setting. For drives that do not use write caching, this option is automatically greyed out.

Enable S.M.A.R.T. Check checkbox tells FastCheck to regularly monitor each drive to assure that drive failure prediction is functioning. The default is unchecked, meaning FastCheck will not monitor this function.

Setting Screen Preferences

This section controls how the FastCheck utility screen is displayed and sets the security password to protect the administrative settings.



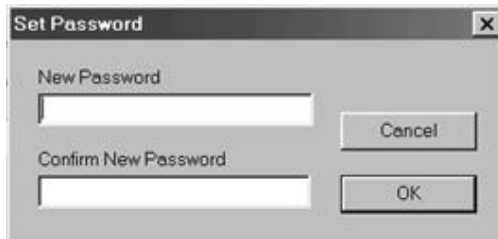
Start Minimized checkbox allows user to have FastCheck appear on the toolbar only on startup. Click on the icon to see the **FastCheck utility** screen.

Always on Top checkbox tells the Utility to appear above all programs until closed or minimized manually.

Enable Password checkbox in the Preferences section turns on/off use of a Password every time the FastCheck Monitoring Utility icon is selected or the program is run from the Start menu. Disabling use of a current password requires password entry (see **Creating Password** chapter).

Creating Password

1. To create a password, check the **Enable Password** checkbox in the Preferences section. The "Set Password" window will appear.

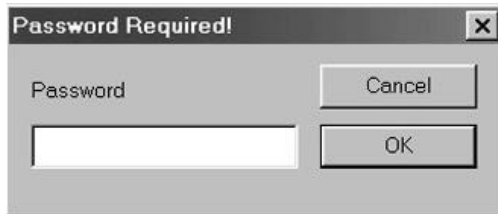


2. Type the password you want to use. Press the Tab key or click to retype the same password in the "Confirm New Password" section. Click the OK button.

NOTE: Remember to record the password you use in a secure place in case you forget it.

3. A confirmation screen will appear saying that "Password Checking is Enabled". Click the OK button.

4. Once the password feature is enabled, the following menu will appear before the FastCheck window can be opened. is enabled, the following menu will appear on each use of FastCheck.



Changing Password

1. Input the original password you first created to gain access to FastCheck.
2. Click on Options tab, then click on the Change button in the Password section. The Set Password screen will appear (see figure in step 3).
3. Type the password you want to use. Press the Tab key or click to retype the same password in the "Confirm New Password" section.
4. Click OK button.

Disabling Password

1. Input the original password you first created to gain access to FastCheck.
2. Click on Options tab.
3. Uncheck the "Enable Password" checkbox. Click Apply button on Options window.

Understanding Disk Array Concepts

About FastTrak100-Lite Disk Array Adapter

FastTrak100-Lite is a high performance Ultra ATA/EIDE RAID controller that features parallel data channel operation and an onboard BIOS. The two channels on the FastTrak100-Lite support parallel operation that allows for overlapped I/O under multi-tasking operating systems and sharing the workload between multiple drives.

About Adapter BIOS

The FastTrak100-Lite contains a BIOS code that extends the standard disk service routine provided through Int13. The BIOS is bootable for DOS and other operating systems that rely on the system BIOS for drive operation. FastTrak100-Lite can support drives and disk arrays with capacities exceeding 8.4 GB using Extended Interrupt13 support. When the FastTrak100-Lite BIOS appears during bootup, users can press <Ctrl-F2> to enter the FastBuild™ setup to select from menu settings.

FastBuild™ Auto Menu Setup

This setup utility is used to build and manage FastTrak100-Lite disk arrays. The utility is menu driven and features the <1> Auto Setup option that uses a simple, interactive setup process. Once the array is built, all the array members store the configuration information in the drive's reserved area.

Reserved Sector

Array configuration data about the drive member and other members in the disk array are saved on a special location on the disk drives called the reserved sector. If any member of the array becomes corrupt or lost, the redundant configuration data on the other members can be used for rebuilds.

Disk array members do not have a "memory" of their drive positions. This allows drives to be placed on different FastTrak100-Lite connectors within the system without reconfiguring or rebuilding.

Disk Array Terms

Disk Array Description

A "disk array" is formed from a group of 2 or more disk drives which appear to the system as a single drive. The advantage of an array is to provide better throughput performance and/or data fault tolerance. Better performance is accomplished by sharing the workload in parallel among multiple physical drives. Fault tolerance is achieved through data redundant operation where if one (or more) drive fails or has a sector failure, a mirrored copy of the data can be found on another drive(s).

For optimal results, select identical Ultra ATA/100 drives to install in disk arrays. The drives' **matched performance** allows the array to function better as a single drive.

Disk Array Member

The individual disk drives in an array are called "members." Each member of a specific disk array is coded in their "reserved sector" with configuration information that identifies the drive as a member. All disk members in a formed disk array are recognized as a single physical drive to the system.

Disk Array Types

For most installations, the FastBuild™ setup "<1> Auto Setup" option will configure your system.

There are two disk array types in three categories that can be installed on the FastTrak100-Lite controller. Striping is in the Performance category while Mirroring, Striping/Mirroring are in the Fault Tolerance category.

Disk arrays within the Performance and Fault Tolerance categories conform with the Redundant Array of Independent Disks technology, or RAID. The RAID levels supported are 0, 1.

RAID Level	Performance	Capacity	#of Drives
RAID 0 (Striping) RAID 1 (Mirroring)	Highest Normal	# Drives x Smallest Size 50% min	2 to 4 2

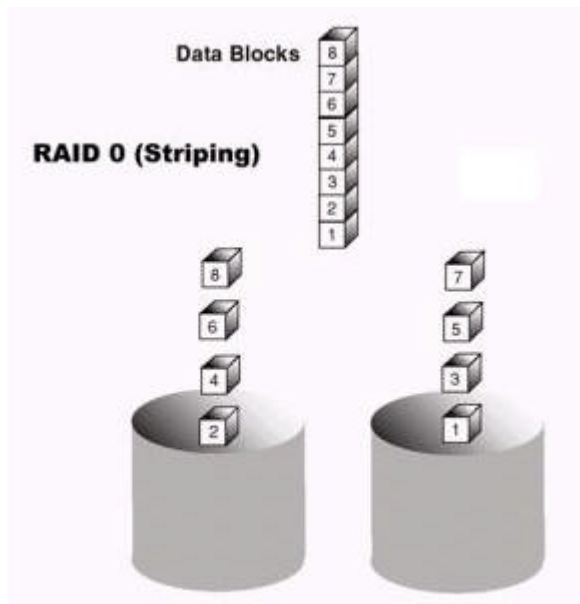
About RAID Levels

Striping (RAID 0)

Reads and writes sectors of data interleaved between multiple drives. When any disk member fails, it affects the entire array. Performance is better than a single drive since the workload is balanced between the array members. This array type is for high performance systems.

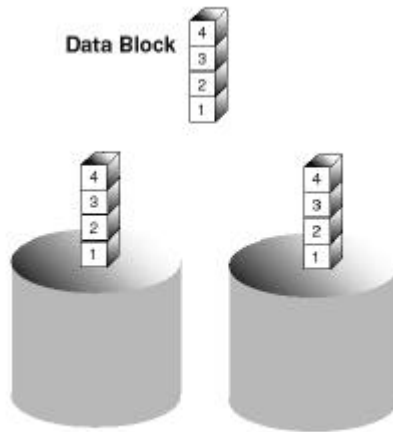
Identical drives are recommended for performance as well as data storage efficiency. The disk array data capacity is equal to the number of drive members times the smallest member capacity. For example, one 1GB and 1 drives will form a 2GB (2 x 1GB) disk array.

Stripe Size - a value can be set from 1KB to 1024KB sector size. The size can directly affect performance. In the FastBuild BIOS, the "Desktop" default is 8KB while "Server" and "AV Editing" are 64KB.



Mirroring (RAID 1)

Writes duplicate data on to a pair of drives while reads are performed in parallel. ATA RAID 1 is fault tolerant because each drive of a mirrored pair is installed on separate IDE channels. If one of the mirrored drives suffers a mechanical failure (e.g. spindle failure) or does not respond, the remaining drive will continue to function. This is called ***Fault Tolerance***. If one drive has a physical sector error, the mirrored drive will continue to function.



RAID 1 (Mirroring)

On the next reboot, the FastBuild™ utility will display an error in the array and recommend to replace the failed drive. Users may choose to continue using their PC, however We recommends replacing the failed drive as soon as possible. See **'Using The Fastcheck Monitor Utility'** Chapter for a functional description.

Due to redundancy, the drive capacity of the array is half the total drive capacity. For example, two 1GB drives that have a combined capacity of 2GB would have 1GB of usable storage. With drives of different capacities, there may be unused capacity on the larger drive.

Troubleshooting & Tips

The section is divided into the following categories: Motherboard Issues, System CMOS Issues, Drive Errors, Operating System Errors, and Audio/Video Editing Tips.

Motherboard Issues

Freeing additional IRQ resources

Since the Promise controller supports PCI Interrupt sharing, it is possible to use IRQs already assigned to another PCI card. Interrupt Sharing is not supported with onboard IDE controllers. If the onboard IDE controller(s) are not used, you may disable the controllers to free IRQ 14 and/or 15.

Configuring PCI IRQ resources

Setting the IRQ for a particular PCI slot will be different depending on the motherboard BIOS. This setting is usually made in the PCI Configuration and/or Plug and Play (PnP) section of the motherboard BIOS setup. There are three common methods that motherboard BIOS's handle assignment of IRQs to PCI slots:

1. Specifically assigning an IRQ to a particular slot - You can tell the motherboard to use IRQ 10 for PCI slot 1, IRQ 11 for PCI slot 2, etc.
2. Listing which IRQs are available to be assigned to the PCI slots - This BIOS has an option where you specify "1st Available IRQ", "2nd Available IRQ", etc. The BIOS then scans the PCI slots for PCI cards and assigns these IRQs in the order that it finds the PCI cards.
3. Excluding an IRQ from being used by a PCI slot - If you have an ISA card that is using an IRQ, change the setting for this particular IRQ from "Available" to "used by ISA card" so that the motherboard will not assign this IRQ to a PCI slot.

Consult your motherboard manual for information that is specific to your motherboard.

System locks up during bootup or when Windows starts

There may be a possible IRQ conflict with an ISA card. Identify what IRQs are used by ISA cards, enter the Mainboard PCI Setup, and reserve the IRQ for use with ISA. PCI slots cannot share IRQs with ISA cards.

Intermittent data problems

Do not exceed the 33Mhz PCI Bus speed. Pentiums set to higher than default settings or AMD K6 and Cyrix CPUs can exceed these limitations and cause intermittent boot and data problems.

System CMOS Issues

Set Mainboard CMOS Boot sequence to boot to FastTrak100-Lite

On some Mainboard BIOS, it is necessary to set the Boot sequence to "RAID / ATA100" since the Promise controller is identified as a SCSI controller.

Mainboard CMOS displays C: or D: drive failure during startup

See **Drive-Related Errors** section.

Using an Onboard IDE controller with FastTrak100-Lite

If an onboard IDE controller is installed with hard disks, enable support in the Mainboard Standard CMOS Setup for the drives. Note that the onboard IDE hard drives will then be the bootable hard disk unless the system BIOS has a boot sequence setting with a "RAID / ATA100" option.

Drive-Related Errors

Critical Array Status Error Reported during Boot

If a critical status error message appears on the FastTrak100 BIOS startup screen for a mirrored array (see below), there is a drive in the array which has failed or is not responding.

FastTrak100-Lite will identify the failed drive by channel number and Master/Slave designation (if 2 drives exist on the same cable). The mirrored array has lost its fault tolerance, but will still perform normal drive reads and writes.

Operation aborted because FastBuild encountered an error as follows:

Location: Channel 2 - Master Drive
Array Status: Critical

Please retry using FastCheck utility to recover all data. Reboot the system by pressing the ENTER key.

Try powering the system off and on to reset the drive. Also confirm that cables are properly attached and the drive is receiving power. If the drive still appears to have failed, proceed to "Rebuild Array" option of FastCheck detailed.

Drive cannot be formed into an array

Drives must support Ultra DMA or Multi-word DMA and be free of media defects to be added into an array. We recommend using new identical drives for each array. Re-secure data and power cabling while checking for proper alignment. Typically, Pin 1 of the drive is closest to the power connector.

Possible Master/Slave problems

Master/slave problems may exist between two ATA or IDE drives of different brands attached to a single cable. For both compatibility and better performance, choose drives of the same model/brand and install them on separate cables. Refer to the Drive Setup by Connector chart for more recommended drive placements.

System CMOS displays C: or D: drive failure during Startup

Do not reference C: or D: in the Mainboard Standard CMOS for drives attached to the FastTrak100-Lite controller. Only enter drive information in the Mainboard CMOS for drives attached to a conventional add-on or onboard IDE controller.

FDISK reports a much lower drive capacity if a single physical drive or a striped array exceeds 64GB

Due to a limitation with FDISK, the utility reports only the storage capacity that exceeds 64GB. This is a cosmetic, not actual, limitation. Simply create a single DOS drive partition, reboot, then format the partition. The Format command will recognize the total capacity of the partition accurately. Windows NT/2000/98 will now recognize the total capacity of your array.

Unable to partition or format array

The Reserve Sector of one of the drives has become corrupt or bad. Removing the Reserve Sector will remedy any issue related directly to a Bad Reserve Sector.



WARNING: Before removing the Reserve Sector of the drive(s), backup any existing data. Removal of the reserve sector of any drive permanently deletes all existing data on the hard drive. For Mirrored arrays (RAID 1), you should remove the Reserve Sector from the "mirrored" drive first (this will appear during Step 3 below) then rebuild the mirrored array. Remove the Sector on the Master Drive only as a last resort. For Striped arrays (RAID 0), removing the Reserve Sector from any of the drives that are striped will destroy the arrayed data.

Raid Introduction

To remove the Reserve Sector, follow these steps:

1. When the FastTrak100-Lite BIOS comes up, press Ctrl-F to enter the FastBuild.
2. Press 2 to "View Drive Assignments".
3. Using the arrow keys, highlight the drive where you wish to remove the reserve sector.
4. Press ALT-F1. The highlighted drive will start blinking on the screen.
5. Press CTRL-TAB. A message will appear that says the reserved sector (which is where array information is kept) on the disk will be wiped.
6. Press "Y" to confirm.
7. For a mirrored arrays, hit the "ESC" key twice to reboot and skip to step 10.
8. For striped arrays, repeat this process for each member of the particular array that is having a problem.
9. When finished, hit the "ESC" key twice to reboot.
10. After rebooting, use FastBuild to re-create the array. For mirrored arrays, rebuild the mirrored array. For striped arrays, use FDISK and FORMAT after setting up the array.

Array Constantly Goes Into Critical or Offline Mode During Reboot

(see "Unable to Partition or Format array")

Cannot Rebuild Mirrored (RAID 1) Array

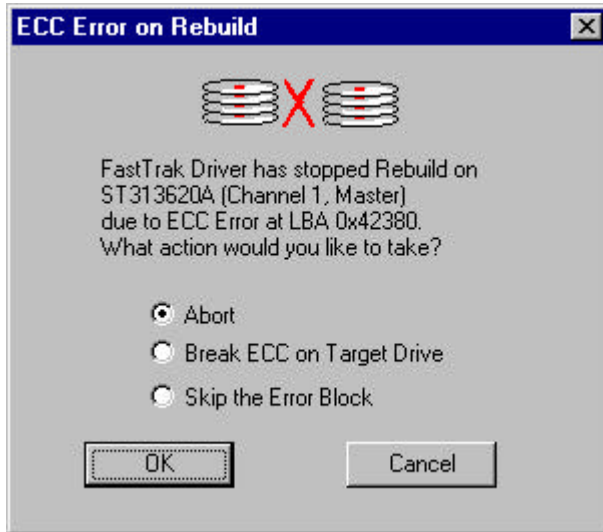
(see "Unable to Partition or Format array")

Fatal Errors or Data Corruption Are Constantly Reported When Reading or Writing to Drive Array

(see "Unable to Partition or Format array")

ECC Error Reported on Rebuild

The following screen will appear if a data error is detected on either source or target drive during Rebuild if you have set the On Errors setting to "Interactive" within FastCheck's Options Window.



Your choices are as follows:

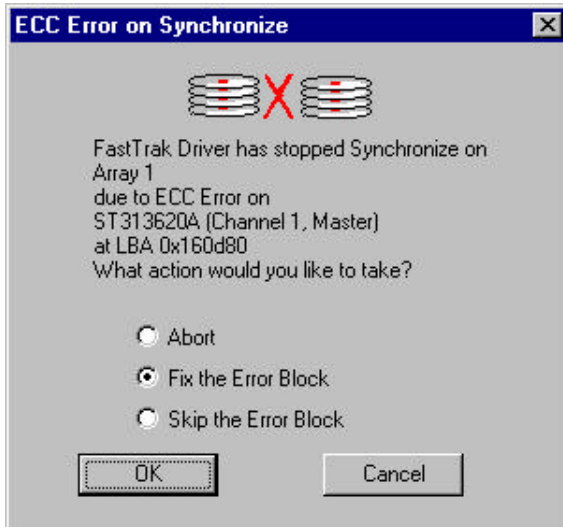
Abort: Halts the rebuild process. You may elect to retry at a later date.

Break ECC on Target Drive: If the error is detected on the source drive, "Break ECC on Target Drive" means that FastTrak will copy the bad data sector on to the target drive to assure that both drives are identical. If the error is detected on the target drive, FastCheck will copy the data contained in the good sector of the source drive again to the target drive.

Skip the Error Block: FastTrak100-Lite will log the event error and continue the rebuild process. Use this setting if you want to detect the presence of errors, but do not want to fix these errors at the time. You may then decide what to do about the error(s) detected.

ECC Error Reported on Synchronize

The following screen will appear if a data error is detected on either source or target drive during Synchronize if you have set the On Errors setting to "Interactive" within FastCheck's Options Window for Scheduled Synchronization or for Manual Synchronization under Notification options.



Your choices are as follows:

Abort: Halts the synchronization process. You may elect to retry at a later date.

Fix the Error Block: FastTrak100-Lite will take a good data block from either drive and copy it to the drive where the error was detected.

Skip the Error Block: FastTrak100-Lite will log the event error and continue the synchronization process. Use this setting if you want to detect the presence of errors, but do not want to fix these errors at the time. You may then decide what to do about the error(s) detected.

Operating System-Related Errors

Different drive lettering under Windows NT

This may happen when using a SCSI card in addition to the promise controller. Windows NT does not necessarily load the driver for the boot device controller first. This results in a drive that in MS-DOS is the C: drive being the D:, or E:, etc. in Windows NT. Use Windows NT's Disk Administrator utility to reassign the letters which NT has assigned to the drives. See your Windows NT documentation for instructions on how to use Disk Administrator.

The Operating System no longer boots after creating a Mirrored Array using your existing boot drive using Windows 98/NT4/2000

This is due to Drive Geometry issues. You can verify this if you move the original drive back to the onboard controller and it boots. Each controller can view a drive differently. This can be an issue for a new controller which loads the original Master Boot Record (MBR) and then has a problem translating it or the Operating System boot record.

For Windows NT or Windows 2000, We recommend a "clean" install of the Operating System. This restores the MBR and OS boot record. You will then need to repartition and format the drive.

For Windows 98, you can perform the DOS Command "SYS C:" from a bootable floppy or CD-ROM to restore the operating system boot record and transfer the system files to the boot drive. If this does not work, the Windows 98 registry may have become corrupted during the boot process and must be restored. See the Windows documentation to perform this procedure.

Windows driver does not appear Device Manager

Windows may already be listing the controller under "Other Devices" instead of "Hard disk controllers" section. In Device Manager under "Other Devices" to see if it lists a "PCI Card", or "RAID Controller". If so, highlight this listing and click on the "Properties" button, and then click on the "Driver" tab. Depending on your version of Windows, choose either "Change Driver" or "Update Driver". Then follow the on-screen prompts to complete installation of the driver. If Windows asks if you want to test if the device can be removed safely click on "CANCEL". Reboot the system to complete installation of the driver.

"Inaccessible Boot Device" Message Appears During Floppyless Install of Windows NT or 2000

The "F6" key was not pressed at the appropriate time. Reboot the system, and press the "F6" key when the message "Setup is inspecting your computer's hardware configuration..." appears in Windows NT4 or the message "Press F6 if you need to install third party SCSI or RAID driver" appears in Windows 2000.

"No Hard Drives Found" Message Appears During CD-ROM Install of Windows NT or 2000

The "F6" key was not pressed at the appropriate time. Reboot the system, and press the "F6" key when the message "Setup is inspecting your computer's hardware configuration..." appears in Windows NT4 or the message "Press F6 if you need to install third party SCSI or RAID driver" appears in Windows 2000.

Raid Introduction

Performance Tips

Here are some tips that may optimize performance in a RAID 0 striped array. If you are using an audio/video editing card, we also recommend to review your card's documentation for additional information.

Use FastTrak100-Lite as D: or other non-bootable drive in a Striped Array

For A/V editing, keep the original system boot drive on the standard IDE controller as C: drive. Partitioning software such as FDISK will see the array as one physical drive, D: drive (or later). This will prevent file fragmentation and provide better accessibility to the array.

Re-Configure PCI Latency Setting

The PCI Latency setting appears in some Mainboard BIOS. The setting governs how much time is allocated to service each PCI slot. We recommend a value of 64. An optimal value is neither too high nor too low and will vary from system to system.

Optimize Array for "Performance"

The FastBuild BIOS Utility autoseup menu allows optimizing the array for A/V Editing. The default Performance setting (Striping) selects a Stripe Block size of 64. This larger block size is recommended for the data streaming requirements of A/V editing. You may select an even larger block size in manual mode.

FastTrak (tm) / FastTrak100-Lite (tm) BIOS Version 1.xx (Build xxxx)
(c) 1995-2000 Promise Technology, Inc. All Rights Reserved.

[Auto Setup Options Menu]

Optimize Array for: Performance
Typical Application usage: A/V Editing

[Auto Setup Configuration]

Mode..... Stripe
Stripe Block Size.....64
Drive used in Array2
Array Disk Capacity13044

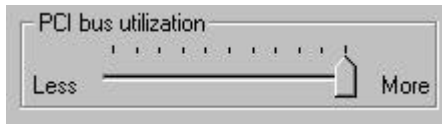
[Keys Available]

[↑] Up [↓] Down [←, →, Space] Change Option [ESC] Exit [Ctrl-Y] Save

Change Setting of PCI Bus Utilization

Certain brands of video capture cards can produce a "glitch" on play back of .AVI files. A setting of "Less" for PCI Bus utilization reduces the time which FastTrak100-Lite occupies on the PCI bus and frees that time for use by other PCI devices and will remove the "glitch" dropout effect on playback.

Once a bus setting has been selected, click the Apply button to implement changes immediately. No reboot is required.



Frequently Asked Questions

This section lists frequently asked questions involving pre-installation, drive issues, installation, and post-installation.

Pre-Installation

(Speed, Device Types, Capacity, Cabling)

Q: What kind of hard drives can I use for a FastTrak100-Lite array?

A: You can use any IDE/EIDE hard drive(s) to create arrays on the FastTrak100-Lite. You should use matching drives for multiple-drive arrays to maximize capacity usage as well as performance. Ultra ATA/100 drives are recommended for highest performance.

Q: Will APM (Advanced Power Management) work with HDDs on the FastTrak100-Lite?

A: APM will not work with HDDs on the FastTrak100-Lite. This is because the system sees the card as a SCSI card.

Q: Can I use ATAPI devices on the FastTrak100-Lite controller?

A: No. There is no driver layer on the FastTrak100-Lite controller which will support ATAPI packet messages.

Q: Will the FastTrak100 Lite work with a 33Mhz or 41Mhz PCI bus speed?

A: The current PCI 2.1 specification is for a 33Mhz PCI bus speed. The FastTrak100-Lite is designed around the specification. In most cases, a higher PCI bus speed will result in a variety of different errors. While some people have been able to get these higher speeds to work, since it is out of specification we cannot support it.

Q: How can I change the resources that the FastTrak uses?

A: The FastTrak100-Lite is fully PnP. This means all the resources that it uses are given to it by the PnP BIOS on the motherboard. The FastTrak100-Lite does support IRQ sharing, but this will not work unless ALL the concerned devices support the feature. If your motherboard allows you to control the assignment of these resources, you may be able to remedy the problem by "playing around" with them. You can also try resetting the configuration data in your CMOS. This is usually an option in the PnP section of your CMOS. Otherwise, the only way you might be able to affect these assignments is to switch the PCI slot that the card is in.

Q: How does the FastTrak100-Lite RAID controller provide storage and/or data protection with their arrays?

A: FastTrak100-Lite implements three different types of RAID levels as follows:

RAID 0 (stripe)

For capacity -- The FastTrak100-Lite array will be as big as the smallest HDD in the array times however many HDDs are in the array. Any larger HDDs will simply be truncated. The truncated space on the bigger HDDs will then be unusable.

For sustained data transfers -- Using FastTrak100-Lite, a RAID 0 array consisting of two HDDs will transfer at about twice the speed of the slowest HDD in the array. A RAID 0 array consisting of four HDDs will transfer at about three times the speed of the slowest HDD in the array.

RAID 1 (mirror)

For capacity -- The FastTrak100-Lite array will be as big as the smallest HDD in the array. The larger HDD will simply be truncated. The truncated space on the bigger HDD will then be unusable.

For sustained data transfers -- The FastTrak100-Lite array will write data at the rate of the slowest HDD in the array. The FastTrak100-Lite array will read data at twice the rate of the slowest HDD in the array.

Drive Issues

Q: Can I add a drive to a FastTrak100-Lite RAID array via hot-swap and dynamically adjust the array size/configuration?

A: No. The FastTrak100-Lite system does not support dynamically adjustable RAID size/configurations.

Q: Do the HDDs on the FastTrak100-Lite have to be the same size?

A: The HDDs that you use with the FastTrak100-Lite do not have to be the same size. If the sizes differ, the FastTrak100-Lite will "adjust" the HDDs so that they are compatible. Basically, it will truncate the bigger HDD so the sizes match. Any unused space that results from this is unusable, so don't use HDDs that differ too much. It'll work, but it's a waste.

Q: Can I take a set of drives which make up an array created on one FastTrak100-Lite server and move it to another FastTrak100-Lite server?

A: Yes. All FastTrak100-Lite controllers read the arrays the same way. Once the drives are all connected, you must restart the system for it to recognize the newly-inserted array configuration.

Q: Can I take a drive used in a FastTrak100-Lite array and access it directly with a different controller, such as the one integrated on the motherboard?

A: Yes, but only under certain configurations. The following array configurations will allow the drive(s) to be accessed individually on another controller: mirror (RAID 0), single drive striped (RAID 1). Multiple drives striped will not work. Also, the controller must address the drives as LBA, not CHS.

Q: If I have a problem with one of the drives on the FastTrak100-Lite, how can I low level format it to correct the problem?

A: Do NOT do this. Low-level formatting IDE drives is unnecessary and generally does not correct problems which might be experienced during use. Errors such as bad sectors or ECC/CRC failure are best remedied by completely replacing the drive. For this reason, drives attached to the FastTrak100-Lite controller should NOT be low level formatted.

Q: Do I have to install disk management software on my array in order to access the full storage capacity of drives?

A: No! Disk management software would only complicate things. The array should be fully addressable by your O/S as it is. Remember that some operating systems have varying limits on the sizes of partitions and logical drives that can be defined. Consult your O/S documentation about partitioning larger drives.

Q: What system BIOS CMOS settings do I use for the drives on the FastTrak100-Lite controller?

A: None. The drives on the FastTrak100-Lite controller are supported by the FastTrak100-Lite BIOS and/or an O/S drivers, not by your system BIOS.

Q: How do I partition/format my FastTrak100-Lite RAID array?

A: The FastTrak100-Lite "fools" the system into thinking that it's dealing with a single HDD. Therefore, anything that you can do to a single HDD can also be done to a FastTrak100-Lite array. You can, and should, use the FDISK and FORMAT utilities to partition/format the array. You can partition the array however you see fit. You can format the array with whatever file system you wish.

Installation Issues

(Capacity, Booting)

Q: Why are some drives recognized by the FastTrak100-Lite Array Setup utilities with only partial capacity?

A: Some hard drive models are shipped with a jumper that reduces the addressable capacity of the drive to prevent problems with older systems which won't support larger drives. Consult the documentation accompanying the hard drive to set the jumper appropriately in order to utilize the full capacity of the drive.

Post-Installation

(Memory Managers, FDISK)

Q: Why does my system reboot after the QEMM driver loads from CONFIG.SYS?

A: The problem lies in the QEMM "Stealth" feature. This feature places the drive information from the DOS System area into the upper reaches of RAM where Windows resides. This causes the FastTrak100-Lite to lose track of its drives when asked to execute the next line in the CONFIG.SYS file. This forces the reboot that you see. Disable QEMM's stealth feature to correct this problem.

Q: Why can't I see the drives on the FastTrak100-Lite under FDISK?

A: The FastTrak100-Lite controller is dedicated to RAID array management and does not provide any means of addressing individual hard drives through the Int 13h interface used by FDISK. In order to access drives on the FastTrak100-Lite from MSDOS at all, you must first create a RAID array.