

WHITE PAPER

May 2001

Prepared by

Access Business Group
Corporate Access
Division

Compaq Computer
Corporation

CONTENTS

EXECUTIVE SUMMARY	1
EXPANSION BASE (ARMADASTATION EM)	2
DOCKING STATION THEFT DETERRENCE...	2
NOTEBOOK THEFT DETERRENCE.....	2
CONVENIENCE BASE3	
DOCKING STATION THEFT DETERRENCE...	3
NOTEBOOK THEFT DETERRENCE.....	3
PORT REPLICATOR.	4
DOCKING STATION THEFT DETERRENCE...	4
NOTEBOOK THEFT DETERRENCE.....	4
NOTICE	4
NOTICE	5

Commercial Notebook Docking Solutions THEFT DETERRENCE FEATURES

EXECUTIVE SUMMARY

The purpose of this white paper is to define the level of theft deterrence offered to the user of Compaq's commercial notebook docking solutions. It is important to note that the primary purpose of the docking stations is to provide cable management, expandability, and battery charging. The docking stations are not designed to act as a security device for the notebook. However, to meet customer needs, Compaq designed additional theft deterrent features into the docking stations. For those users requiring a complete package for notebook security, details on Compaq's solutions are available at

<http://www.compaq.com/products/notebooks/security.shtml>.

EXPANSION BASE (ARMADA STATION EM)

DOCKING STATION THEFT DETERRENCE

U-Bolt: located on the back of the base, the U-Bolt accommodates a cable or chain, which can be secured to a fixed object to deter theft of the docking station

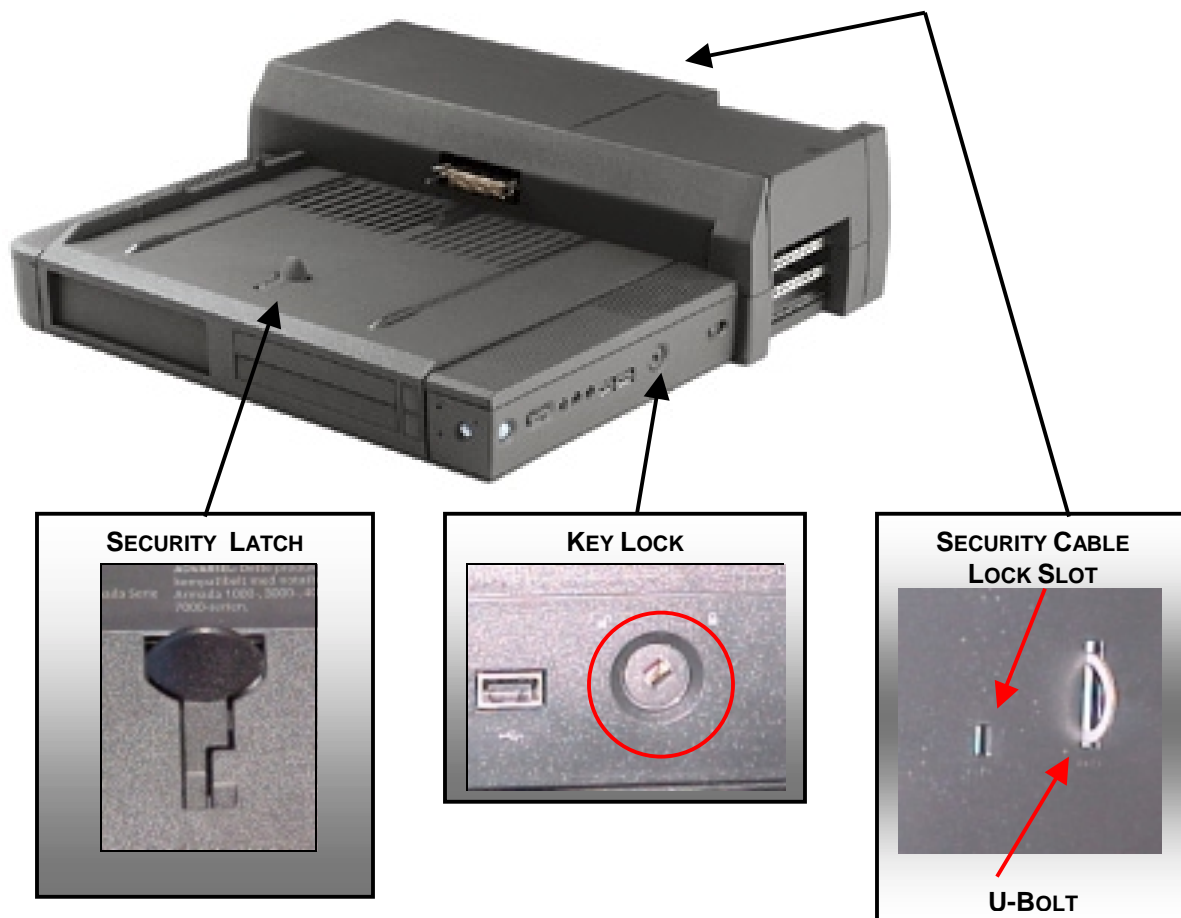
Security cable lock slot: (on the back of the base) accommodates the optional security cable lock, which can be secured to a fixed object to deter theft of the docking station

NOTEBOOK THEFT DETERRENCE

Key Lock: located on the right side of the base, this feature provides the following:

- Disables the automatic eject mechanism (eject button and ejection motor)
- Disables the release latch on the rear panel where the manual notebook eject button and PCI slots are located
- Disables Multibay Device release buttons

Security Latch: located on the bed of the base, the Security Latch secures the front of the notebook to the base platform to deter the removal of the notebook Multibay Devices while docked (for the Armada E500, M700)



CONVENIENCE BASE

DOCKING STATION THEFT DETERRENCE

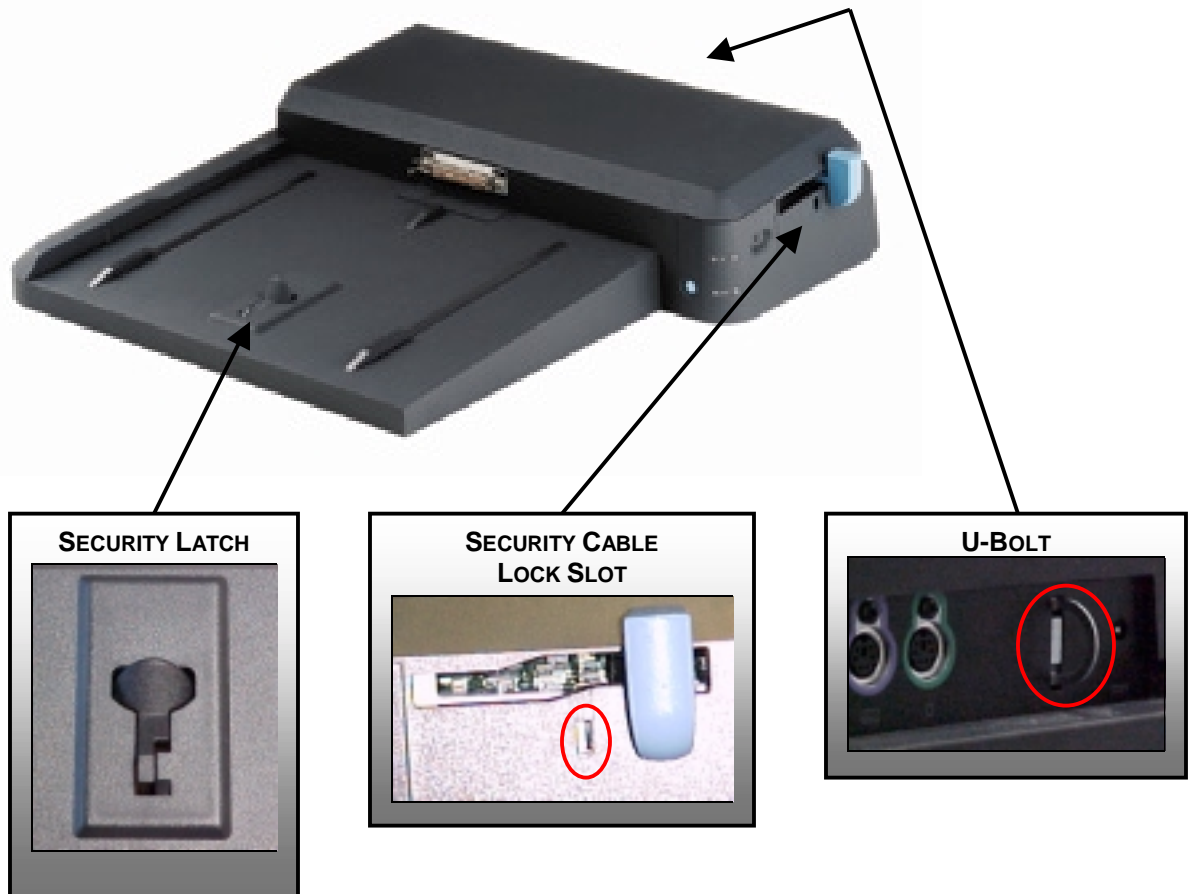
U-Bolt: located on the back of the base, the U-Bolt accommodates a cable or chain, which can be secured to a fixed object to deter theft of the docking station

Security cable lock slot: accommodates the optional security cable lock, which can be secured to a fixed object to deter theft of the docking station

NOTEBOOK THEFT DETERRENCE

Security cable lock slot: located in front of the manual eject lever. When the optional security cable lock is installed, forward movement of the ejection level is blocked deterring the removal of the notebook from the base.

Security Latch: located on the bed of the base, the Security Latch secures the front of the notebook to the base platform to deter the removal of the notebook Multibay Devices while docked (for the Armada E500, M700)



PORT REPLICATOR

DOCKING STATION THEFT DETERRENCE

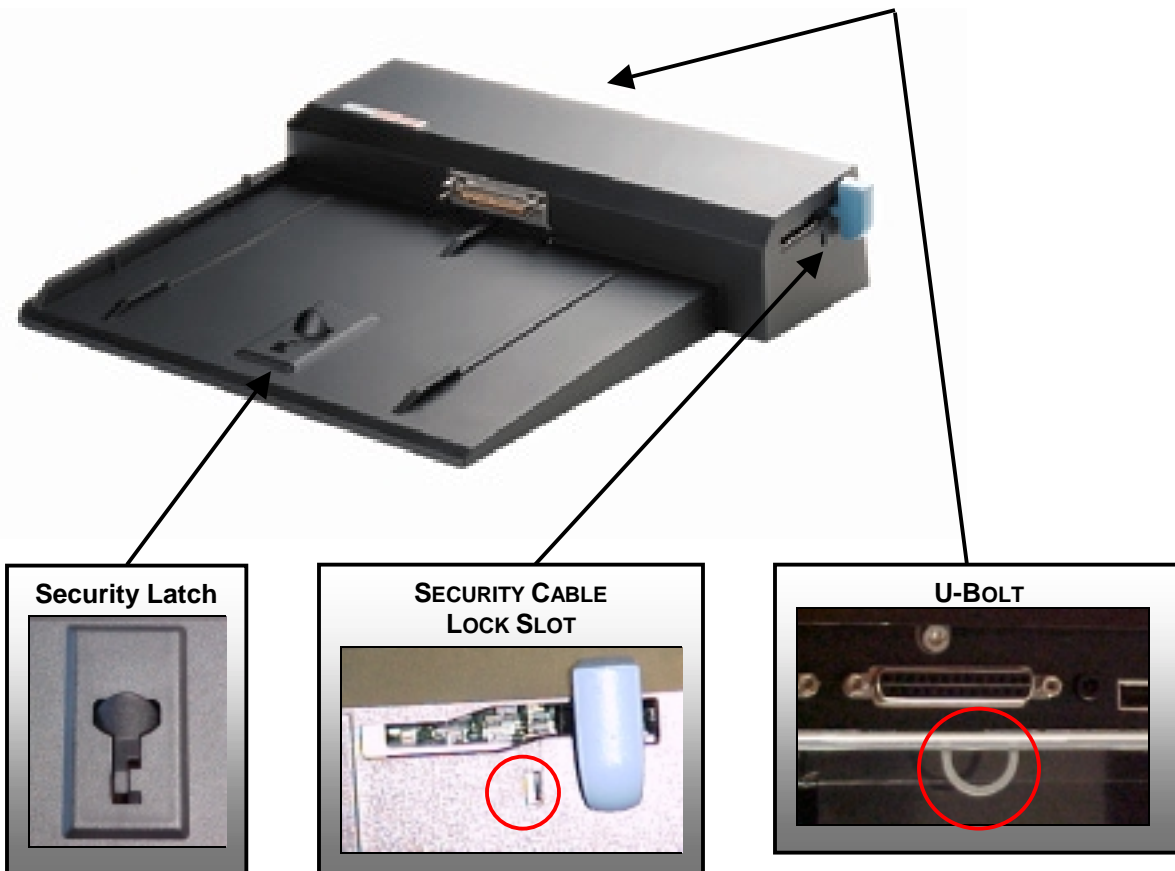
U-Bolt: located on the back of the base, the U-Bolt accommodates a cable or chain, which can be secured to a fixed object to deter theft of the docking station

Security cable lock slot: accommodates the optional security cable lock, which can be secured to a fixed object to deter theft of the docking station

NOTEBOOK THEFT DETERRENCE

Security cable lock slot: located in front of the manual eject lever. When the optional security cable lock is installed, forward movement of the ejection level is blocked deterring the removal of the notebook from the base

Security Latch: located on the bed of the base, the Security Latch secures the front of the notebook to the base platform to deter the removal of the notebook Multibay Devices while docked (for the Armada E500, M700)



NOTICE

The information in this publication is subject to change without notice.

COMPAQ COMPUTER CORPORATION SHALL NOT BE LIABLE FOR TECHNICAL OR EDITORIAL ERRORS OR OMISSIONS CONTAINED HEREIN, NOR FOR INCIDENTAL OR CONSEQUENTIAL DAMAGES RESULTING FROM THE FURNISHING, PERFORMANCE, OR USE OF THIS MATERIAL.

Compaq and Armada are trademarks of Compaq Computer Corporation and are registered with the United States Patent and Trademark Office.

Intel, Pentium, Celeron, MMX and other names of Intel products are trademarks and/or registered trademarks of Intel Corporation.

Microsoft, Windows, Windows NT and other names of Microsoft products are trademarks and/or registered trademarks of Microsoft Corporation.

Other product names mentioned herein may be trademarks and/or registered trademarks of their respective companies.

©2001 Compaq Computer Corporation. All rights reserved. Printed in the U.S.A.