

Sharing enterprise data across workgroups and applications

Now you can easily create collaborative and knowledge management business solutions for your Microsoft® Exchange/Outlook® environment. Replic-Action® for *Compaq Work Expeditor*—a joint solution from Compaq and Casahl Technology Inc.—seamlessly integrates *Compaq Work Expeditor* with more than 35 data repositories, including Oracle®, SAP® R/3™, and Lotus® Domino™, in real time

or batch mode—without having to write a line of custom code!

This *Compaq NonStop™* eBusiness solution gives knowledge workers access to information residing at the enterprise level—while retaining their familiar Outlook interface. By providing the right information to the right people, and at the right time, Replic-Action for *Compaq Work Expeditor* can boost productivity and make your people more responsive to customers, business partners, and suppliers. Replic-Action extends the capabilities of *Compaq Work Expeditor*, helping it deliver on its promise to be the best collaborative platform available today.

Benefits:

- Provides easy access to enterprise data—public, private, and work folders—through Microsoft Outlook.
- Synchronizes data between *Compaq Work Expeditor* and over 35 data repositories, including SQL Server®, Oracle, DB2, AS/400®, Access, SAP R/3, Lotus Domino, and more.
- Automatically retrieves column names from an SQL Table and fields from an Outlook form for easy mapping.

Now you can easily integrate the power of enterprise application data in collaborative line-of-business applications using Replic-Action for Compaq Work Expeditor.

Extends the functionality of Compaq Work Expeditor

Replic-Action 6.0a, from Casahl Technology Inc., offers you the fastest way to integrate enterprise data with your workgroup applications. Replic-Action is a powerful tool that has been integrated with *Compaq Work Expeditor*—an industry-leading work management and collaboration solution that extends the capabilities of your Microsoft Exchange environment by adding automated and secure work management processes.

Working together, Replic-Action and *Compaq Work Expeditor* are ideal for building a knowledge management foundation because they allow you to integrate unstructured data—including fax, hard copy letters, electronic documents, e-mail, graphics, and more with structured data in your corporate repositories.

Makes integration fast and easy

With Replic-Action for *Compaq Work Expeditor*, you can easily integrate structured data from Lotus, Oracle, and SAP repositories with unstructured data in documents, e-mail messages, and Outlook forms. Maybe you need to move data from ERP applications such as SAP into a response to a customer problem, or from Lotus Domino into a *Compaq Work Expeditor* document. In all cases, Replic-Action for *Compaq Work Expeditor* is your answer.

Replic-Action enables workgroups based on SQL Server and Exchange to easily access and synchronize enterprise data with *Compaq Work Expeditor* solutions. Based on a scalable server architecture, Replic-Action offers bidirectional synchronization, sophisticated data transformations, and a hands-off scheduler. Best of all,

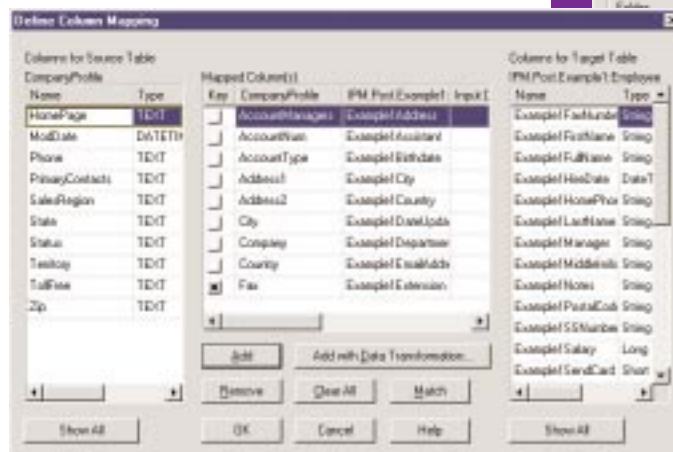
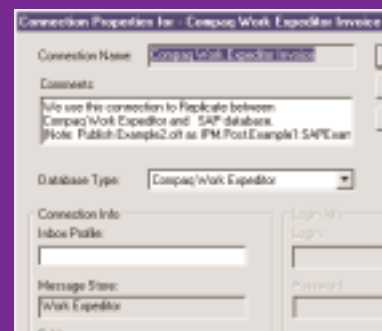
Replic-Action synchronization jobs require no programming—making it easy to prototype and deploy because you don't have to write a line of custom code.

Creates a seamless enterprise

With Replic-Action you can:

- Link *Compaq Work Expeditor* and Outlook (Contact, Post, Task, etc.) information to nearly any backend system, including SQL Server, DB2, AS/400, Oracle, Informix, and more.
- Populate *Compaq Work Expeditor* server from corporate data warehouses.
- Integrate ERPs and DBMSs into *Compaq Work Expeditor* server for Internet and intranet applications.

In addition to bidirectional synchronization, Replic-Action can be configured to retrieve and update from your backend system in real time—providing unparalleled integration flexibility for *Compaq Work Expeditor*. Simply put, Replic-Action is the easiest way to move data between *Compaq Work Expeditor* and your corporate data repositories—bidirectionally, or record-by-record, in real time.



Compaq and the Compaq logo are registered trademarks of Compaq Computer Corporation. NonStop is registered in the U.S. Patent and Trademark Office. Lotus is a registered trademark and Domino is a trademark of Lotus Development Corporation. Microsoft and Outlook are registered trademarks of Microsoft Corporation. Oracle is a registered trademark of Oracle Corporation. Replic-Action is a registered trademark of Casahl Technology Inc. SAP is a registered trademark and R/3 is a trademark of SAP AG. SQL Server is a trademark of Sybase, Inc. All other company or product names are used for identification purposes only, and may be trademarks or registered trademarks of their respective companies. Compaq believes the information in this publication is accurate as of its publication date; such information is subject to change without notice. Compaq is not responsible for any inadvertent errors. Compaq conducts its business in a manner that conserves the environment and protects the safety and health of its employees, customers, and the community.

Printed in the U.S.A. © Copyright 1999 Compaq Computer Corporation. All rights reserved. Part # 0070-0999-A Rel. #XXX/99 09 XX 2.0

Take the next step

To find out more about *Compaq Work Expeditor* software and Casahl Replic-Action, visit www.compaq.com/expeditor

