

Antigen for Microsoft Exchange



Antivirus & Content-filtering for Exchange

Sybari's Antigen for Microsoft Exchange offers a pre-emptive line of defense from propagating e-mail worm viruses, and is the only single, server-level antivirus solution that delivers advanced file and content-filtering capabilities and multiple scan engine technologies.

Advanced Technology, Innovative Protection

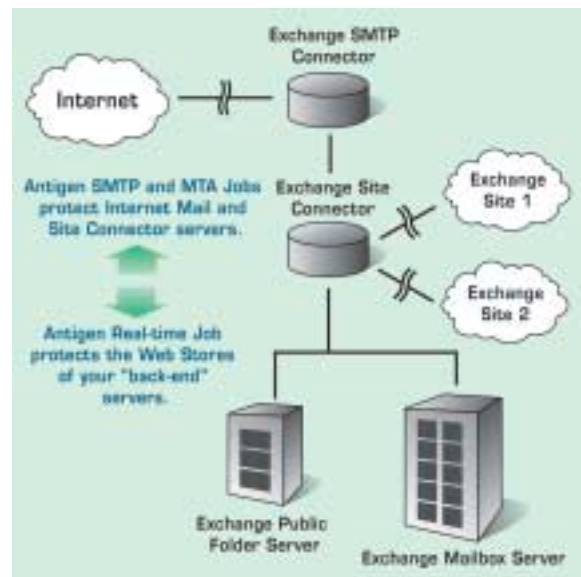
Microsoft Exchange gives your Outlook users the power of collaboration. This robust, all-inclusive messaging and collaboration solution enables Outlook users to communicate and share data and documents through e-mail. As Outlook users share information, however, they also share the capacity to receive and distribute e-mail borne viruses, worms, and malicious code—corrupting your company’s valuable data and compromising your network.

Microsoft Exchange administrators have a solution: Antigen from Sybari. Antigen is a comprehensive antivirus, content-filtering, and e-mail security solution specifically designed to meet the security needs of Microsoft Exchange administrators. Antigen detects, blocks, filters, and removes viruses—before they reach mission-critical applications—without compromising the integrity of your messaging and collaboration servers.

A Host of Powerful Features

Pre-emptive Protection. While traditional antivirus products scan e-mail messages and their attachments for harmful viruses after they have reached a sensitive part of the network, Antigen employs a more innovative approach: it automatically scans and disables threats within the message headers, body, and attachment at multiple scanning points before they reach user mailboxes and cause irrevocable harm. With its proactive approach to e-mail message scanning and filtering, Antigen stays one step ahead in detecting threats, delivering maximum virus protection for your messaging and collaboration servers.

Remarkable Speed Combined with Incredible Performance. Antigen’s unique “in-memory” scanning technology allows it to scan faster—while minimizing the operational impact on your Exchange server. In addition to scanning at the Information Store, Antigen scans incoming and outgoing SMTP mail messages at Microsoft Exchange’s Internet Mail Service (IMS) connector on Exchange 5.5 or the SMTP transport stack on Exchange 2000. Antigen’s MTA Scan Job also scans message traffic traversing the Exchange 2000 MTA, including X.400 and other connector traffic. By distributing the scanning across servers and at multiple points on each Exchange server, Antigen exceeds administrators’ expectations for protection and server efficiency.



- Antigen’s unique architecture reliably scans 100% of Messages and objects being written to the Information Store in real-time.
- Antigen provides selectable modes including full support of the Microsoft Virus Scanning API (VS API 2.0) for Exchange 2000.
- Antigen scans for security threats before they reach user mailboxes.
- Antigen uses multiple scan engines to provide greater protection with minimal impact on corporate servers.
- Antigen provides file attachment filtering and blocks messages by subject line, sender, or domain name. Once detected, files can be quarantined, deleted, or purged.
- Antigen is a single solution for Exchange 5.5 and Exchange 2000 servers.
- Antigen provides outbound disclaimers.

Sophisticated Scanning Options. Antigen gives administrators of messaging and collaboration servers a variety of tools and options for enhanced performance. Antigen also delivers more features specifically designed to compliment Microsoft Exchange 2000 Server.

- Real-time, scheduled, and on-demand scanning of multiple Storage Groups and their databases.
- Full protection of the Exchange 2000 Web Storage System, Installable File System (“M: drive”), and Outlook Web Access (OWA).
- SMTP message protection using Exchange 2000 server transport events provides protection for all messages routed through Exchange.
- MTA message scanning provides protection for all messages routed through the Exchange MTA Connectors (X.400, MS Mail, CC Mail, etc.)

Virus Scanning API (VS API) 2.0 Integration for Exchange 2000. Antigen provides support for the Microsoft VS API 2.0 offering administrators a comprehensive solution for mixed environments. Antigen can now be configured to utilize either the ESE or VS API 2.0 implementation for Exchange 2000, while employing ESE for Exchange 5.5 (no service pack restrictions). A single solution for both platforms ensures optimal protection during server migrations from previous versions of Exchange to Microsoft Exchange 2000.

Multiple Scan Engine Management. Antigen delivers multiple virus scan engine support with six of the leading scan engine technologies from Kaspersky Labs, Network Associates, Sophos, Norman Data Defense, and two eTrust antivirus engines from Computer Associates. The multiple scan engine manager is available for all Antigen scan jobs and allows administrators to customize and configure a variety of settings and options at each level.

Designed to Provide Maximum Performance. To avoid taxing resources and enhance scanning performance, mail attachments are scanned “in-memory” instead of spooling files to disk. Multiple scan engines employ in-memory cache to maximize performance during file scanning. Administrators have full control of options and configure the use of scan engines appropriately for their environment.

Central Administration. Antigen is enterprise ready and can be installed and deployed easily from a single location to all Exchange servers. Configuration and monitoring of all Antigen operations and quarantine databases can be handled from a centralized location utilizing the Antigen Central Manager (ACM), the Antigen Client, and the Antigen Active X control.

Antigen File Filtering™ (AFF). AFF filters all incoming and outgoing messages with attachments by file extension, type, name, or wild cards and provides options to quarantine, delete, or purge detected files accordingly. Attachments can also be blocked based on file size.

Antigen Content Filtering. Block incoming and outgoing messages based on subject line text or wild card, sender, or domain name. Antigen quarantines and/or deletes messages as desired.

Automatic Purging of Worm Viruses. Antigen Worm Purge™ enables administrators to completely eliminate e-mail messages containing known worm viruses prior to penetrating the Exchange Web Store. This reduces help desk call volumes, as well as worm generated spam.

Automatic Updates. Virus signatures are automatically updated to ensure that the latest viruses are immediately detected. All Exchange servers can be configured to download and update their scan engines through a single designated server.

Notification and Quarantine Services. Uses customized Exchange messaging for notification of virus incidents. Virus activity is monitored from the Antigen console, an NT log, or text file. Antigen provides a quarantine area as a repository for the analysis and processing of infected attachments.

Disclaimers. Enables administrators to append customized disclaimer text to all outbound messages at the SMTP Scan Job.

“Antigen caught fifty one thousand copies of the “love” virus in the first 24 hours that the virus was hitting servers worldwide. My team used the Antigen File Filtering feature and it worked brilliantly.”

Mark Moynes, Nortel Networks

FEATURES UNIQUE TO SYBARI'S ANTIGEN FOR MICROSOFT EXCHANGE

- ▶ Full protection of the Exchange 5.5 and 2000 web storage system, including support for Outlook Web Access.
- ▶ Multiple scan engine technologies for comprehensive virus detection. Integrates leading third-party scan engines from Norman Data Defense, Network Associates, Sophos, Computer Associates, and Kaspersky Labs.
- ▶ Seamlessly integrates with the Microsoft Exchange 2000 Virus Scanning API (VS API 2.0).
- ▶ Selectable ESE and VS API 2.0 modes provide administrators a single migration solution for Microsoft Exchange 2000 and 5.5.
- ▶ Provides "pre-emptive" protection by scanning all inbound and outbound mail at the Internet Mail Connector (IMC) in Exchange 5.5 and the SMTP in Exchange 2000.
- ▶ Enterprise Ready - Antigen Central Manager console, remote administration, and automatic scan engine updates.
- ▶ Ideal for new virus outbreaks before definition files are ready.
- ▶ Delete files, purge and/or quarantine full messages based on file name match, file types or wildcard.
- ▶ Delete and/or quarantine full messages based on subject line, sender, or domain name.

EXCHANGE COMPATIBILITY

- Microsoft Exchange Server 2000, 5.5 or 5.0, (all service packs supported)
- Antigen also supports Exchange running on Microsoft Cluster Servers

SYSTEM REQUIREMENTS

- Microsoft Windows NT 4.0, Windows 2000 Server
- Microsoft Exchange Server versions 5.0, 5.5, or 2000 (all service packs supported)
- Antigen also supports Exchange running on Microsoft Cluster Servers including Windows 2000 Active/Active clusters
- 28 MB of available RAM
- 10 MB of available disk space



Antigen's flexible update options insure that all scan engines are always up to date.



Antigen File Filtering (AFF) enables you to be proactive about virus elimination by providing the ability to prevent file types from entering your messaging environment.



Antigen's multiple scan engine give users the assurance of being able to select from several virus labs during new virus outbreaks.



Sybari Software, Inc. 353 Larkfield Rd. E. Northport, NY 11731
 Phone: 631.630.8500 Fax: 631.630.8550 E-mail: info@sybari.com www.sybari.com