

LAL		Revisions			210	B
Rev.	Description	Chk.	Date	Approved		
A	ENGRG RELEASE		7/6			
B	CONN DESIGNATION P2 WAS P3	BN	6-14 76			

**ENGINEERING
RELEASE**

Dist. Code **ALT**

<p>These drawings and specifications, and the data contained therein, are the exclusive property of Xerox Corporation and/or Rank Xerox, Ltd. issued in strict confidence and shall not, without the prior written permission of Xerox Corporation or Rank Xerox, Ltd., be reproduced, copied or used for any purpose whatsoever, except the manufacture of articles for Xerox Corporation or Rank Xerox, Ltd.</p>	Notes Unless Specified		Drawn <i>M. McCormica</i>	3-12-76	Xerox Corporation El Segundo, California	XEROX
	<p>1. Tolerances .XX ±.030 Angular ±½° .XXX ±.010</p> <p>2. Break All Sharp Edges .010 Approx.</p> <p>3. Mach. Surfaces ✓</p> <p>4. All Dim. In Inches</p>		Check <i>E. Cole</i>	3/11/76		
			Appr. <i>Glenn Wilson</i>	5/7/76		
			Material		/	
Model No. ALTO II First Use EWO 7YF 92	Finish	Code Ident.	Size A	Dwg. No. 216410	Change Letter B	
Next Assy. First Use 209911		18338	Scale NONE	Do Not Scale Drawing	Sheet 1 OF 5	

NOTES: UNLESS OTHERWISE SPECIFIED

1. FABRICATE PER XEROX SPEC 209454.
2. MARK CHARACTERS .12 HIGH "NEWS GOTHIC".
3. MAY BE PURCHASED FROM AMPHENOL CONNECTOR DIVISION, BROADVIEW, ILLINOIS, VENDOR PART NUMBER.
4. MAY BE PURCHASED FROM CANNON ELECTRIC, SANTA ANA, CALIFORNIA, VENDOR PART NUMBER.
5. MAY BE PURCHASED FROM BELDEN CORP, RICHMOND, INDIANA, VENDOR PART NUMBER.

These drawings and specifications, and the data contained therein, are the exclusive property of Xerox Corporation and/or Rank Xerox, Ltd. issued in strict confidence and shall not, without the prior written permission of Xerox Corporation or Rank Xerox, Ltd., be reproduced, copied or used for any purpose whatsoever, except the manufacture of articles for Xerox Corporation or Rank Xerox, Ltd.

Title

ALTO II

ASSEMBLY, CABLE - DISPLAY (EXTERNAL)

Xerox Corporation
El Segundo, California

XEROX

216410

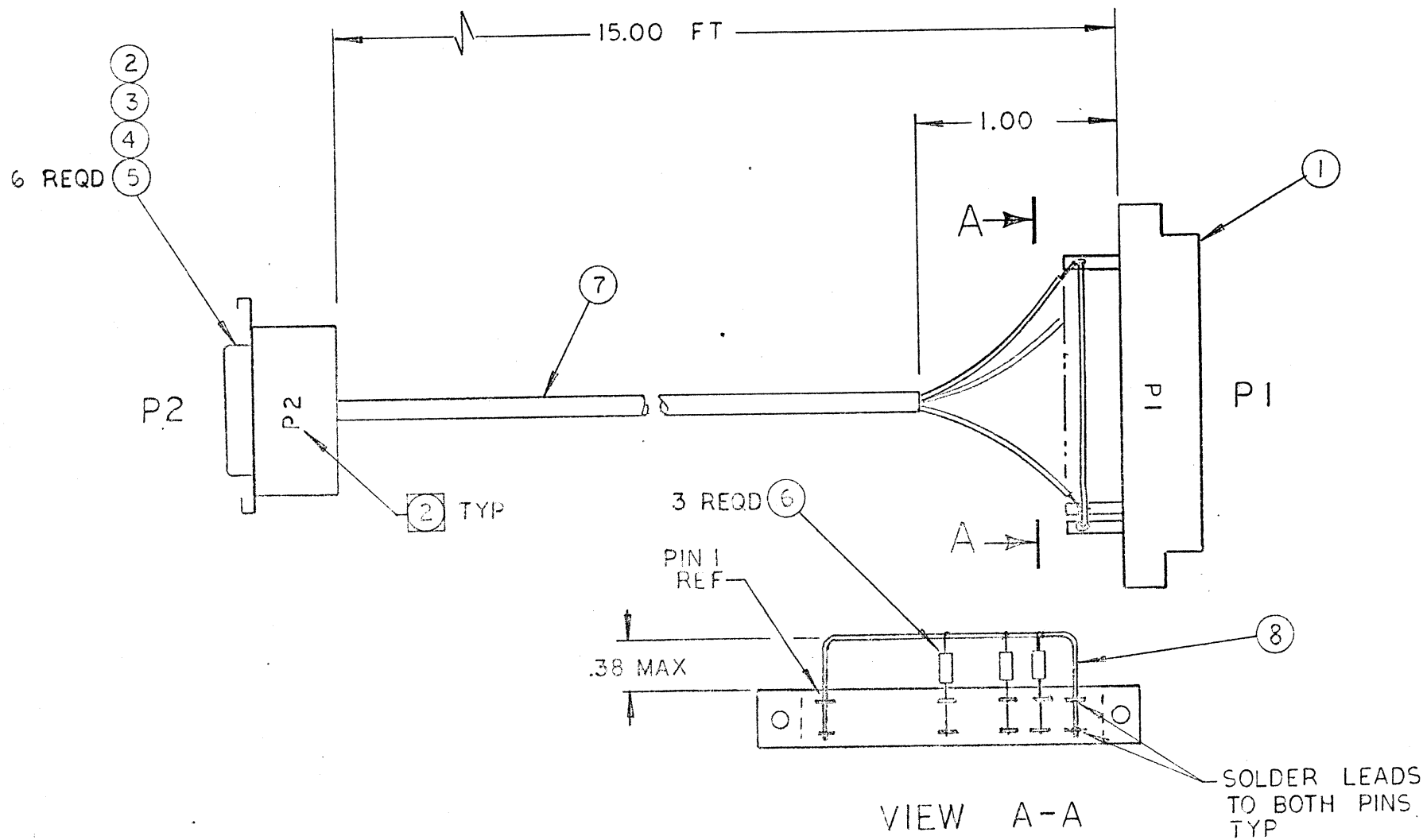
B

Sheet

2

Of

5



VIEW A-A
 ROTATED CCW 90°
 WIRES NOT SHOWN FOR CLARITY

These drawings and specifications, and the data contained therein, are the exclusive property of Xerox Corporation and/or Rank Xerox, Ltd. issued in strict confidence and shall not, without the prior written permission of Xerox Corporation or Rank Xerox, Ltd., be reproduced, copied or used for any purpose whatsoever, except the manufacture of articles for Xerox Corporation or Rank Xerox, Ltd.

Title
 ALTO II
 ASSEMBLY, CABLE - DISPLAY (EXTERNAL)

Xerox Corporation
 El Segundo, California

XEROX

216410		B
Sheet	3	Of 5

