

LAL		Revisions			21	B
Rev.	Description	Chk.	Date	Approved		
A	ENGRG RELEASE					
B	M/L ITEM 2 PART NO. WAS 3417	<i>SW</i>	<i>5/28/76</i>	<i>[Signature]</i>		

**ENGINEERING
RELEASE**

Dist. Code **ALT**

<p>These drawings and specifications, and the data contained therein, are the exclusive property of Xerox Corporation and/or Rank Xerox, Ltd. issued in strict confidence and shall not, without the prior written permission of Xerox Corporation or Rank Xerox, Ltd., be reproduced, copied or used for any purpose whatsoever, except the manufacture of articles for Xerox Corporation or Rank Xerox, Ltd.</p>	Notes Unless Specified	Drawn	<i>[Signature]</i>	<i>[Signature]</i>	Xerox Corporation El Segundo, California	XEROX	
	<p>1. Tolerances .XX ±.030 Angular .XXX ±.010 ±½°</p> <p>2. Break All Sharp Edges .010 Approx.</p> <p>3. Mach. Surfaces ✓</p> <p>4. All Dim. In Inches</p>	Check	<i>[Signature]</i>	<i>[Signature]</i>			
		Appr.	<i>[Signature]</i>	<i>[Signature]</i>			
		Material					
					ALTO II ASSEMBLY, CABLE - DISK (INTERNAL)		
<p>Model No ALTO II Part No EWO. 7YF 92</p> <p>Part No 216299</p>	Finish	Code Ident.	18338		Size	Dwg. No.	Change Letter
				A		216400	B
		Scale NONE	Do Not Scale Drawing		Sheet 1 OF 4		

NOTES: UNLESS OTHERWISE SPECIFIED

1. IDENTIFY PER XEROX SPEC 100198 (TAG).
2. MAY BE PURCHASED FROM 3M COMPANY, SAINT PAUL, MINN, VENDOR PART NUMBER.

These drawings and specifications, and the data contained therein, are the exclusive property of Xerox Corporation and/or Rank Xerox, Ltd. issued in strict confidence and shall not, without the prior written permission of Xerox Corporation or Rank Xerox, Ltd., be reproduced, copied or used for any purpose whatsoever, except the manufacture of articles for Xerox Corporation or Rank Xerox, Ltd.

Title

ALTO II

ASSEMBLY, CABLE - DISK

(INTERNAL)

Xerox Corporation
El Segundo, California

XEROX

216400

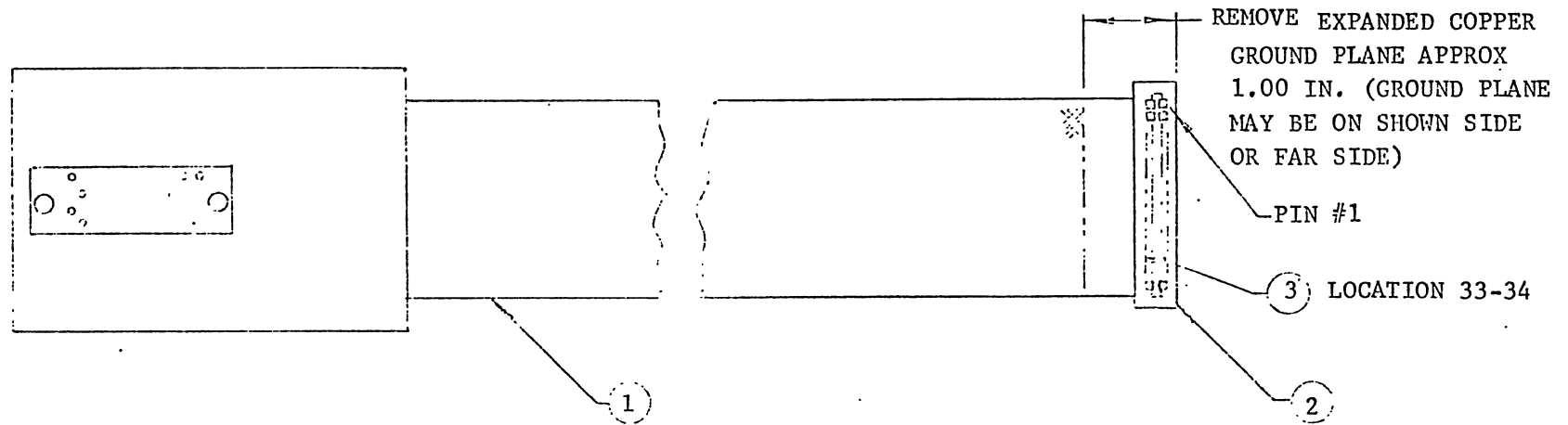
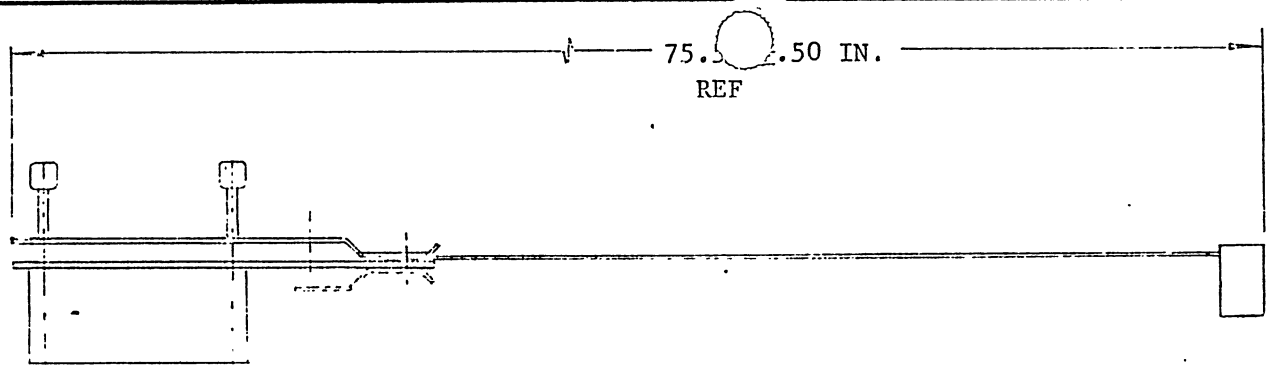
B

Sheet

2

of

4



These drawings and specifications, and the data contained therein, are the exclusive property of Xerox Corporation and/or Rank Xerox, Ltd. issued in strict confidence and shall not, without the prior written permission of Xerox Corporation or Rank Xerox, Ltd., be reproduced, copied or used for any purpose whatsoever, except the manufacture of articles for Xerox Corporation or Rank Xerox, Ltd.

Title
ALTO II
ASSEMBLY, CABLE - DISK
(INTERNAL)

Xerox Corporation El Segundo, California		XEROX	
216400		B	
Sheet	3	of	4

ALTO II INTERNAL DISK CABLE

WINCHESTER	TO	ALTO	SIGNAL
A		2	READ CLOCK
B		3	WRITE DATA & CLOCK
C		38	READ DATA
D		1	GROUND
E		39	READ GATE
F		4	S/R/W
H		34	WRITE PROTECT INPUT, ATTENTION
J		37	CYL 8
K		35	ERASE GATE
L		5	SELECT LINE UNIT 1
M		36	HIGH DENSITY (OPTIONAL)
N		6	CYL 7
P		33	WRITE PROTECT IND
R		7	SELECT LINE UNIT 2
S		32	PSEUDO SECTOR MARK, ATTENTION
T		8	CYL2
U		31	FILE READY
V		9	SELECT LINE UNIT 3
W		30	SECTOR MARK
X		10	CYL 4
Y		29	INDEX MARK
Z		11	SELECT LINE UNIT 4
AA		28	HEAD SELECT
BB		12	CYL 1
CC		27	BIT SECTOR ADDX
DD		1	GROUND
EE		26	WRITE GATE
FF		13	CYL 3
HH		25	WRITE CHK
JJ		14	BIT 2
KK		24	BIT 4
LL		15	CYL 8
MM		23	BIT 8
NN		16	ADDX ACKNOWLEDGE
RR		19	CYL6
SS		22	STORBE
TT		17	SEEK INCOMPLETE
UU		21	BIT 16
VV		20	RESTORE
WW		1	GROUND
XX		18	LOG ADDX INTERLOCK (OPTIONAL)