

**VT525 Color Video Terminal**  

---

**Installation and Operating  
Information**

**Boundless Technologies**

1916 Route 96, Phelps NY 14532

Phone toll-free: 1-800-231-5445

Phone: 1-315-548-6189

email: [support@BoundlessTerminals.com](mailto:support@BoundlessTerminals.com)

[www.BoundlessTerminals.com](http://www.BoundlessTerminals.com)

July 1999

**FCC ID: CR8-VGB25**

**Note:** This equipment has been tested and found to comply with the limits for a Class B digital device, pursuant to Part 15 of the FCC rules. These limits are designed to provide reasonable protection against harmful interference in a residential installation. Any changes or modifications made to this equipment may void the user's authority to operate this equipment.

This equipment generates, uses, and can radiate radio frequency energy and, if not installed and used in accordance with the instructions, may cause harmful interference to radio and television reception; however, there is no guarantee that interference will not occur in a particular installation. If this equipment does cause harmful interference to radio or television reception, which can be determined by turning the equipment off and on, the user is encouraged to try to correct the interference by one or more of the following measures:

- Re-orient or relocate the receiving antenna.
- Increase the separation between the equipment and the receiver.
- Connect the equipment to an outlet on a circuit different from that to which the receiver is connected.
- Consult the dealer or an experienced radio/TV technician for help.

ADDS is a trademark of Applied Digital Data Systems, Inc. DEC, VT and the DIGITAL logo, are trademarks of Digital Equipment Corporation. Kensington is a registered trademark of Kensington Microware Limited. IBM, ProPrinter, and PS/2 are registered trademarks of International Business Machines Corporation. SCO is a trademark of Santa Cruz Operations, Inc. TVI is a trademark of TeleVideo, Inc. UNIX is a registered trademark of UNIX System Laboratories, Inc. WY and WYSE are registered trademarks of Wyse Technologies. The Energy Star emblem does not represent EPA endorsement of any product or service. A monitor with a ferrite core on the video line may be used with the VT525.

All Rights Reserved.  
Printed in U.S.A.

# Contents

<b>Preface</b> .....	v
<b>1 Installation and Set-Up</b>	
1.1 Installation .....	1-2
1.2 Set-Up .....	1-4
1.3 Using Color .....	1-9
<b>2 Multiple Sessions</b>	
2.1 Overview .....	2-1
2.2 Using a Terminal Server with TD/SMP .....	2-2
2.2.1 Using SSU Host Software .....	2-2
2.2.2 Opening Another Session .....	2-2
2.3 Tips for Using Multiple Sessions .....	2-3
<b>3 Desktop Features</b>	
3.1 Invoking Desktop Features .....	3-1
3.1.1 Clock feature .....	3-2
3.1.2 Calculator feature .....	3-3
3.1.3 Show Character Sets feature .....	3-4
3.1.4 Banner message .....	3-4
3.2 Keyboard Summary .....	3-5

## 4 Defining Keys

4.1	Define Key Editor .....	4-1
4.1.1	Creating a New Function .....	4-2
4.1.2	Creating a Key Sequence .....	4-3

## A Maintenance and Troubleshooting

A.1	Cleaning your Video Terminal .....	A-1
A.2	Troubleshooting .....	A-1
A.3	Installing the ROM Cartridge .....	A-3

## B Specifications

### Figures

1-1	VT Keyboard Layout .....	1-3
1-2	PC-Style Keyboard Layout .....	1-3
1-3	Communications Port Set-Up Screen .....	1-8
4-1	Define Key Editor, Select Function .....	4-3
B-1	Comm1—Serial Communication/Printer Ports .....	B-4
B-2	Comm2 and Comm3—MMJ Ports .....	B-5
B-3	Parallel Printer Port (Bidirectional) .....	B-5

### Tables

1	Recommendations for Proper Setup and Use .....	vii
A-1	Identifying and Correcting Problems .....	A-2
B-1	Standards Conformance and Approvals .....	B-7

# Preface

## Overview

This guide is for users who want to install and configure the VT525 video terminal. This guide describes how to connect cables and enter the Set-Up menu to make changes, as needed. This guide also has reference tables for troubleshooting, specifications, and compose sequences.

For more detailed information on programming the terminal, refer to the *VT520/VT525 Video Terminal Programmer Information*. See the inside back cover for ordering information.

## Environment

### Note

This product has been designed and manufactured to minimize the impact to the environment. The packaging is recyclable and the terminal can be returned for proper disposal. The terminal also has power management features that exceed the Environmental Protection Agency (EPA) Energy Star requirements for saving energy.

## Before You Start

A small flat-blade screwdriver may be needed to install the communication or the printer cables.

## Conventions

The following conventions are used in this document:

Convention	Meaning
<code>Caps Lock</code>   <code>Print Screen</code>	Indicates two keys that you must press in combination. Press and hold the first key while you press the second key.
<code>Lock</code>   <code>0</code>	Indicates two keys that you must press in sequence. Press and release the first key before you press the second.
<code>Caps Lock</code>   <code>Alt</code>   <code>F11</code>	Indicates three keys that you must press in combination, holding the first two down while pressing the third.
<i>kpd</i>	Indicates a key on the numeric keypad.

## Proper Setup and Use

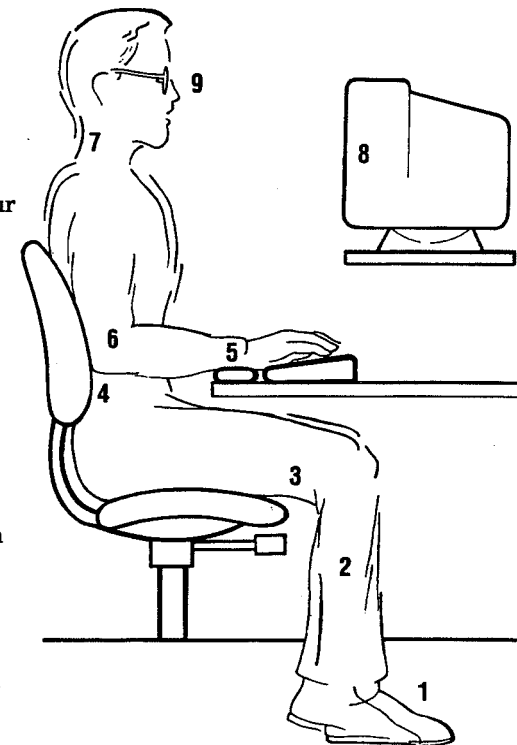
### Important Information

Certain recent scientific literature suggests that poor posture, work habits, or office equipment setup may cause injuries. Other literature suggests that there is no cause and effect. Because the safety of our users is a great concern, it is important to take the precautions described in Table 1.

If you experience pain or discomfort while using the terminal, take a substantial break and review the instructions for posture and work habits. If your pain or discomfort continues when you resume using the terminal, discontinue use and report the condition to your job supervisor or physician.

**Table 1 Recommendations for Proper Setup and Use**

Adjust	So that your . . .
<b>Chair</b>	1 Feet are flat on the floor or footrest, if needed.
	2 Legs are vertical forming a right angle to the floor.
	3 Weight is off your thighs and are in a horizontal position. Keep the back of your knees away from the seat so you do not compress the area behind them, which could restrict the blood flow.
	4 Upper body is erect and your lower back is supported with a backrest.
<b>Keyboard</b>	5 Wrists are straight and do not flex more than 15°. They may be supported but should not rest on sharp edges.



MA-0069-93.IL

(continued on next page)

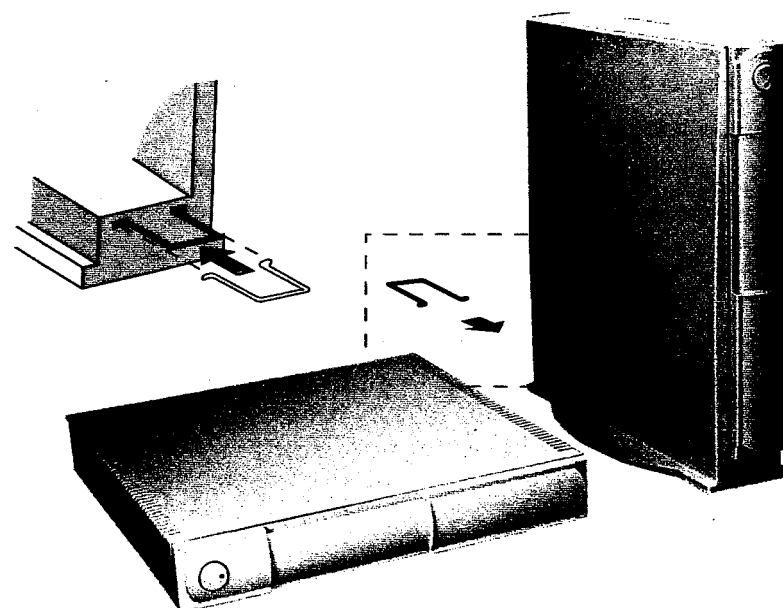
**Table 1 (Cont.) Recommendations for Proper Setup and Use**

Adjust	To ...
	6 Keep your upper arms straight down at your sides, elbows close to your sides to support your arm weight. Forearms should be at a 70° to 90° angle.
<b>Head</b>	7 Avoid neck strain. Your head should incline downward, but no more than 15° to 20°.
<b>Terminal Eyes</b>	8 Keep eye level and the correct distance for proper vision.
	9 Avoid eye fatigue, which can be caused by glare, image quality, uncomfortable furniture, eye height, and uncorrected vision. If you cannot read the screen at different distances, you may need special glasses. Relax your eyes periodically by looking at distant objects.
<b>Work Breaks</b>	Take periodic work breaks. Morning, lunch, and afternoon breaks meet most recommendations. Take advantage of work breaks to move around and do other movements.
<b>Lighting</b>	Avoid direct lighting or sunlight on the screen, which causes glare and reflections. The terminal screen has an antiglare treatment to reduce glare. Place lighting behind or to the side of your work area, and distribute the lighting evenly on your work area. Adjust the terminal brightness and the contrast controls as needed.
<b>Noise</b>	Keep background noise at a minimum. Background noise above 65 dBA is tiring. Sound-absorbing materials, such as curtains, carpeting, and acoustic tile, can help reduce background noise.
<b>Temperature</b>	20°C to 23°C (68°F to 74°F)
<b>Humidity</b>	30% to 70%
<b>Ventilation</b>	Provide adequate air ventilation for equipment operation and to avoid fatigue.
<b>Space between terminals</b>	More than 70 cm (28 in) center to center, preferably more than 152 cm (60 in).

## Installation and Set-Up

**If desired, install the system box in its stand.**

The VT525 comes with a stand. You can use the system box without the stand under your monitor, or you can install the system box in the stand. Instructions are illustrated on the stand. A wire clip is included to dress the cables neatly along the back of the system box.

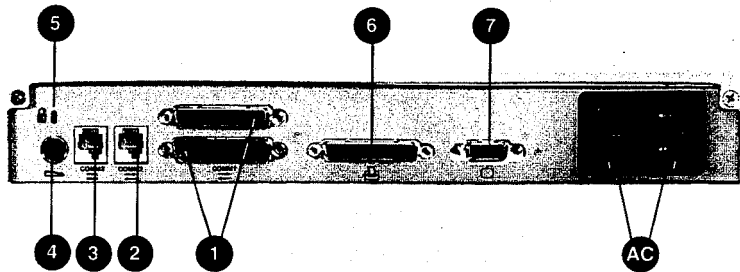


## Installation and Set-Up

### 1.1 Installation

### 1.1 Installation

Connect the cables to the system box.



- ① Comm 1 (male or female), ② Comm 2, ③ Comm 3 (Serial printer),  
 ④ Keyboard, ⑤ Kensington lock socket, ⑥ Parallel printer, ⑦ Monitor

Connect the cables to the monitor.

Check your monitor manual for correct installation.

Push the system box and monitor power switches on.

A green light in the switch indicates that power is on.

#### Power Up Selftest

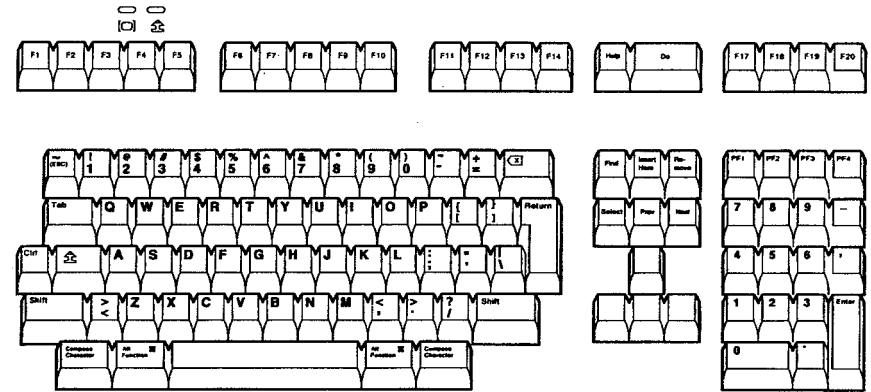
The terminal takes a few seconds to warm up and complete its power up self-tests. Then, the terminal should display "Selftest OK." If a problem occurs, go to the Appendix A.

## Installation and Set-Up

### 1.1 Installation

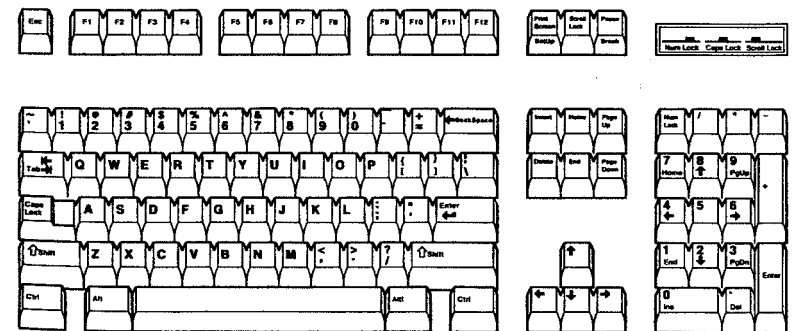
### Keyboards

Figure 1-1 VT Keyboard Layout



MA-1520a-92.PS

Figure 1-2 PC-Style Keyboard Layout



LJ-00226a-T10.PS

## 1.2 Set-Up

### Overview

Use Set-Up to examine or change the terminal operating features. The Set-Up menu summary at the bottom of the screen are the communication features to get you started in operating the terminal. There are many more Set-Up features in the terminal that you may wish to change.

Before changing the communication Set-Up features, contact your System Manager if necessary.

Printer operations are suspended upon entering Set-Up and are resumed upon exiting Set-Up.

### Entering/Exiting Set-Up

To enter or exit Set-Up, perform the following procedures:

On a ...	Press ...	Refer to ...
VT keyboard	<input type="button" value="F3"/>	Figure 1-1
PC keyboard	<input type="button" value="Caps Lock"/> <input type="button" value="Print Screen"/>	Figure 1-2

### Moving within a Set-Up Menu

Use the arrow keys (, , , ) to move among the menus or within a list, or to select buttons.

In a menu ...	Indicates ...
<input type="button" value="▷"/>	A pull-right submenu is available.
...	A dialog box is available for you to specify more information.
<input type="radio"/> a	The menu item with the filled-in circle is enabled. Only one of these items can be enabled at a time.
<input type="radio"/> b	
<input type="radio"/> c	
<input checked="" type="checkbox"/>	The menu item with the checkbox is enabled.

Press , , , or  to start the action or to choose the currently highlighted feature.

A dimmed menu item does not apply to the currently selected mode.

### Caution

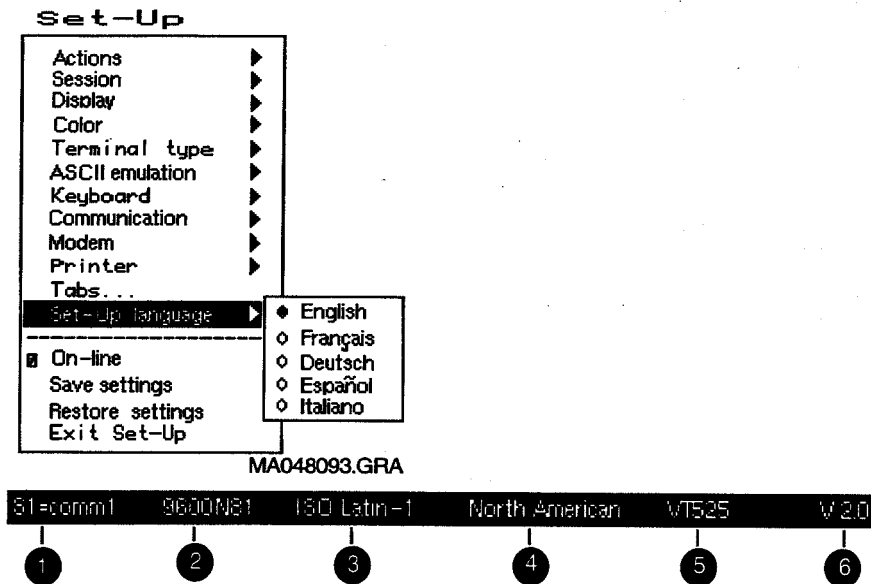
If you disable the **Display ▷ CRT Saver** feature, an image may etch onto the screen, which may shorten the terminal's useful life.

## Installation and Set-Up

### 1.2 Set-Up

#### Select the Set-Up language.

This language selection is for Set-Up only and does not affect keyboard, character set, or printer settings. As you make changes to some Set-Up parameters, the Set-Up summary line will reflect those changes.



- ① Port selected, ② Transmit speed (9600), Parity (N), Word size (8), Stop bits (1), ③ Character set, ④ Keyboard language, ⑤ Emulation mode, ⑥ Firmware version.

## Installation and Set-Up

### 1.2 Set-Up

#### Configuration

The VT525 allows you to open up to four sessions depending on the communications connections and the host software. As a minimum for each session (S1, S2, S3, and S4), determine the following menu items, and note any change here that you make from the default value.

Menu item	Default	S1	S2	S3	S4
Terminal type ▶	VT525				
Emulation mode		_____	_____	_____	_____
Keyboard ▶ Keyboard language	English	_____	_____	_____	_____
Communication ▶ Port select	See Figure 1-3.	_____	_____	_____	_____
Communication ▶ Word size	8 bits	_____	_____	_____	_____
Communication ▶ Parity	None	_____	_____	_____	_____
Communication ▶ Transmit speed	9600 baud	_____	_____	_____	_____
Communication ▶ Receive speed	Transmit speed	_____	_____	_____	_____
Printer ▶ Printer type	ANSI <sup>1</sup>	_____	_____	_____	_____
Color ▶ Assign colors ...					

<sup>1</sup>American National Standards Institute



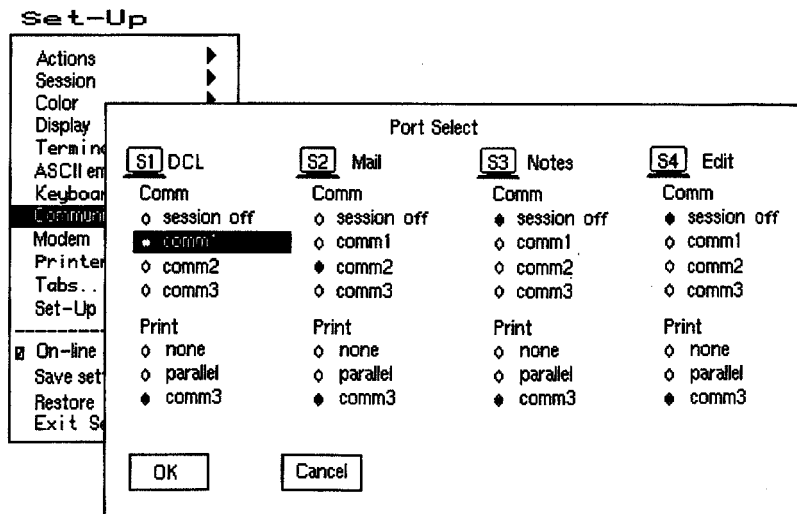
Notes

For a session to be enabled, it must be assigned to a comm port. If you assign more than one session to the same comm port, you must use a terminal server that supports Terminal Device Session Management Protocol (TD/SMP), or a host that supports Session Support Utility (SSU).

A port cannot be assigned as both a comm port and a printer port at the same time.

Selecting Comm = "• none" disables a session. A session that is dimmed is disabled, but it can still be configured in Set-Up.

Figure 1-3 Communications Port Set-Up Screen



MA048493.GRA

1.3 Using Color

You can control the terminals display colors. You may choose color settings to match your software, to emulate another terminal, or to suit your preference. Depending on the settings you choose, for each session you can assign colors for various text uses and defined a map of 16 colors (8 text and 8 background) from a larger palette of 4096 colors. Changes in color selections become visible upon entering new text and when the screen is refreshed.

**If you want to ...** From the Color submenu in Set-Up, choose ...

Let your application specify text colors by using ANSI SGR sequences **Select color mode > • ANSI SGR color.**

Use **Assign colors ...** to choose the default text and background colors from a map of 16 colors. The default background color is black (00 on the scale).

Use **Define colors ...** to make fine adjustments to individual colors or background.

Display text attributes (bold, reverse, blink, and underline) in different colors **Select color mode > • Alternate color.** Then, choose **Alternate text colors ...** to assign colors to each combination.

Use **Define colors ...** to make fine adjustments to individual colors or background.

Emulate WYSE 325 color **ASCII color mode > • Color.** Use WYSE 325 keystroke functions, **Ctrl 0 ... 9 kpd**, to select from the color palette.

Emulate the appearance of a monochrome ASCII terminal **ASCII color mode > • Mono.**

## Multiple Sessions

### Installation and Set-Up 1.3 Using Color

If you want to ...	From the Color submenu in Set-Up, choose ...
Choose the window frame and icon colors	Assign colors ...
Erase text to the text background color (PC style)	Erase color ▸ • Text background.
Erase text to the screen background color (VT style)	Erase color ▸ • Screen background.

#### Save your settings.

Use one of the following procedures:

Save ...	Select menu item ...
Active session only	Save settings
All sessions	Session ▸ Save settings for all

Then, press **Enter** or **Return**.

#### Restore previously saved settings.

Use one of the following procedures:

Restore ...	Select menu item ...
Active session only	Restore settings
All sessions you saved	Session ▸ Restore settings for all
Factory defaults for all sessions	Action ▸ Restore factory defaults

Then, press **Enter** or **Return**.

### 2.1 Overview

Multiple sessions extends the VT525 to act like four terminals in one. A *session* is an active connection between the terminal and a host system. See Figure 1-3.

The VT525 supports up to four sessions using virtual terminals. Each virtual terminal maintains the full keyboard and display state of a real physical terminal but shares a single keyboard and display with other virtual terminals. Before you can login using a virtual terminal, it must be connected to a host computer.

VT525 session virtual terminals can be connected directly to a host computer through any of the three serial communication ports on the back of the terminal. Since there are only three comm ports, this method alone can only support three sessions.

To use a fourth session or to reduce the number of serial comm lines needed, more than one session must be connected through a single comm port. The VT525 allows this using a session management protocol, called TD/SMP (Terminal Device/Session Management Protocol). TD/SMP allows two or more sessions to share a single comm line, as long as the other end of the comm line supports the protocol. To enable TD/SMP at the terminal, you simply assign more than one session virtual terminal to the same comm port in Set-Up.

TD/SMP is available on most terminal servers or host systems with SSU software. If you are using a terminal server, check with its documentation to determine if it can run TD/SMP.

## Multiple Sessions

### 2.2 Using a Terminal Server with TD/SMP

## 2.2 Using a Terminal Server with TD/SMP

At the Local> prompt, enter the following command:

```
Local> set port multi enable Return
```

Continue with your login procedure.

To permanently set a terminal server port to use TD/SMP, type:

```
Local> define port multi enable Return
```

### 2.2.1 Using SSU Host Software

If your VT525 is connected directly to a host computer without a terminal server, you can still use TD/SMP by running the Session Support Utility (SSU) on your host computer. On a system that has SSU software, such as OSF/1 or OpenVMS, enable sessions as follows:

```
$ SSU ENABLE Return
```

### 2.2.2 Opening Another Session

Once TD/SMP is enabled, you can open a new session and switch between them as follows:

1. Press the F4 (Session) key on a VT keyboard; or press Caps Lock 0 *kpd* on a PC keyboard.
2. To go directly to a particular session, press Caps Lock 1, 2, 3 or 4 on the numeric keypad. The session number for the current session is displayed at the lower left of the screen.

## Multiple Sessions

### 2.3 Tips for Using Multiple Sessions

## 2.3 Tips for Using Multiple Sessions

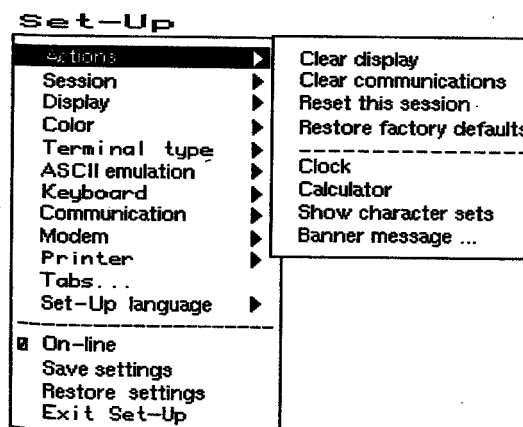
- You can display data from two sessions at the same time by dividing the screen into two windows. Press CtrlF4 (Session) or Ctrl Caps Lock 0 *kpd* to change the window configuration.
- When you choose **Display** ▸ **Framed windows**, you can assign a 30-character name to each session for the window title bar. The first 12 characters of the session name become the session icon name. If the title is a valid host or service name, a terminal server will try to automatically open a connection to that service.
- If you allow a session to be updated from the host, when new data is received that has not been displayed, the session icon at the top of the screen blinks.
- To enable two or more sessions to use the same settings, configure either one, then use **Copy settings from** in the session menu to copy the desired settings to other sessions.
- You can control the number of pages of display memory available to each session from Set-Up by using the **Pages per session...** dialog. The typical terminal has nine pages total. Before you increase pages in one session, you may need to reduce the pages assigned to other sessions. Any data on pages affected will be erased.
- If the session context between the terminal and host is lost due to a power failure or other interruption, you can usually restore the previous session context without starting over by pressing F4 or Caps Lock 0 *kpd*.
- The terminal automatically enables session management when you assign more than one session to a single comm port.

## Desktop Features

### 3.1 Invoking Desktop Features

#### Overview

From the **Actions** menu, you can invoke **Clock**, **Calculator**, **Show character sets** and the **Banner message**. When the feature is highlighted (displayed in reverse video), press **Enter** or **Return** to enable the feature. A quick start summary of some keyboard features is provided, as well as how to implement the **Accessibility Aid** feature and the **Copy and Paste** function. You can copy and paste within a session and between sessions, as well as **Review previous lines** on a page.



MA049193.GRA

While these desktop features are enabled, other terminal functions are disabled. Press **CtrlZ**, **F10**, **Exit**, or **Esc** to exit the feature.

## Desktop Features

### 3.1 Invoking Desktop Features

#### 3.1.1 Clock feature

You can enable the **Clock** feature without entering Set-Up by pressing **[Caps Lock Alt F11]** if you are either in a VT or an SCO console emulation mode.

The current time is displayed in the status line if this feature is enabled. The format is HH:MM, followed by AM or PM if the 12-hour format is selected. Use the following keys within the clock feature:

Key	Function
<b>[↓]</b> or <b>[Tab]</b>	Go to next field.
<b>[↑]</b> or <b>[Shift Tab]</b>	Go to previous field.
<b>[←]</b> or <b>[→]</b>	Move within a field.
<b>[Return]</b> or <b>[Enter]</b>	If desired, check the 24-hour format box. For example, before entering 13:00, enable <b>24-hour format</b> .
<b>[A]</b> or <b>[P]</b>	For 12-hour format, set the time to morning by pressing <b>[A]</b> or <b>[P]</b> for afternoon.
<b>[Caps Lock Enter]</b>	Input the clock time at the cursor position and exit the clock.

If the clock feature is enabled, then the alarm sounds for five seconds or until a key is pressed. Each alarm message can be up to 20 characters and will be displayed in the status line until a key is pressed. If the hourly chime is enabled, then the terminal will beep once every hour. In Set-Up, select the **Save settings** menu item to save the time format. The clock feature is disabled when the terminal is turned off.

## Desktop Features

### 3.1 Invoking Desktop Features

#### 3.1.2 Calculator feature

If you are either in a VT or an SCO console emulation mode, you can enable the **Calculator** feature without entering Set-Up by pressing **[Caps Lock Alt F12]**.

In addition to the numbers on the numeric keypad, you can use the following keys with the calculator:

Key	Function
<b>[H]</b> , <b>[O]</b> , or <b>[D]</b>	Selects hexadecimal <b>[H]</b> , octal <b>[O]</b> , or decimal <b>[D]</b> format.
<b>Arrow keys</b>	Move the position of the calculator on the screen.
<b>[Shift]</b>	Changes the keypad display to allow selecting <b>[STO]</b> , <b>[RCL]</b> , <b>[1/x]</b> , <b>[X<sup>2</sup>]</b> , and <b>[Insert Result]</b> .
<b>[Alt]</b>	Changes the keypad display to hexadecimal and allows selecting <b>[A]</b> through <b>[F] kpd</b> .
<b>[C/E]</b>	Clears the entry.
<b>[STO]</b>	Stores the number in the display into memory.
<b>[RCL]</b>	Recalls the number from memory and places it in the display.
<b>[Shift Enter]</b>	Inserts the result at the current cursor position after exiting the calculator feature.

All calculator math operations have equal priority except  $1/x$  and  $x^2$ . If a result is wider than the display, then a rounded number will be displayed. The non-rounded result will continue to be used in subsequent calculations. The decimal point cannot be used with the hexadecimal mode.

## Desktop Features

### 3.1 Invoking Desktop Features

#### 3.1.3 Show Character Sets feature

If you are in either a VT or an SCO console emulation mode, you can enable the **Show character sets** desktop feature without entering Set-Up by using **Caps Lock | Alt | F10**. When the character set is displayed, you can use the following keys with this feature:

Key	Function
<b>Next</b> or <b>Prev</b>	Looks through the available character sets.
<b>Page Up</b> or <b>Page Down</b>	
<b>Shift   A</b>	Restores the character set.
<b>Shift   L</b>	Displays the line drawing character set, if you are using a VT character set.
<b>Shift   T</b>	Displays the technical character set.
<b>Shift   Enter</b>	For the current character set, inserts the highlighted character into text at the current cursor position, if you are using a VT character set.

#### 3.1.4 Banner message

The Banner message is the message that is displayed when you turn the terminal on. You can change this message as desired. From the **Actions** menu, select **Banner message**....

1. Press **Return** or **Enter** to display a dialog box.
2. Enter your banner message.
3. Press the **↓** to select the **OK** button.
4. Press **Return** or **Enter** to return to the Set-Up menu.

## Desktop Features

### 3.2 Keyboard Summary

#### 3.2 Keyboard Summary

The following table provides a quick start summary of some keyboard features.

To ...	VT Keyboard, press ...	PC Keyboard, press ...
Hold the screen	<b>F1</b>	<b>Scroll Lock</b>
Print the screen	<b>F2</b>	<b>Print Screen</b>
Enter/Exit Set-Up	<b>F3</b>	<b>Caps Lock   Print Screen</b>
Switch session	<b>F4</b> or <b>Caps Lock   0</b>	<b>Caps Lock   0   kpd</b>
Select specific session	<b>Caps Lock   1, 2, 3, or 4</b>	<b>Caps Lock   1, 2, 3, or 4</b>
Break	<b>F5</b>	<b>Caps Lock   Pause</b>
Toggle split screen	<b>Ctrl   F4</b>	<b>Ctrl   Caps Lock   0   kpd</b>
Adjust window size	<b>Ctrl   Shift   ↑</b> or <b>↓</b>	<b>Ctrl   Shift   ↑</b> or <b>↓</b>
Pan or Review previous lines	<b>Ctrl   ↑</b> or <b>↓</b>	<b>Ctrl   ↑</b> or <b>↓</b>
<b>Copy and paste:</b>		
Start copy	Hold down <b>F1</b> †	Hold down <b>Scroll Lock</b>
Move to beginning of text	<b>←</b> , <b>→</b> , <b>↑</b> , or <b>↓</b>	<b>←</b> , <b>→</b> , <b>↑</b> , or <b>↓</b>
Select beginning of text	<b>Select</b> ‡	<b>Home</b> ‡
Select end of text	<b>Remove</b>	<b>End</b>
Finish copy	Release <b>F1</b>	Release <b>Scroll Lock</b>
Move to different session if desired.		
Paste	<b>F1   Insert Here</b>	<b>Scroll Lock   Insert</b>

†For SCO console, press **Caps Lock | F1**.

‡If you press the **Select** key (or **Home** key) twice, the keyboard will toggle the copy direction between left-to-right and right-to-left directions for use with right-to-left scripts.

## Desktop Features

### 3.2 Keyboard Summary

#### Accessibility aid

This feature allows a user with limited motor skills to use modifier key combinations in a sequential manner rather than in a simultaneous manner. All modifier key combinations are supported. There are two operation states—Latch and Lock. The *Latch state* affects only the next key pressed. When in the *Lock state*, all keys pressed are affected by the modifier until you press the same modifier key again or press any other modifier key twice. A small icon indicating the state is displayed on the Keyboard Indicator Line or the Status Line.

<b>To enable:</b>	Press any modifier key five times.
<i>Latch state:</i>	Press any modifier key once.
<i>Lock state:</i>	Press any modifier key twice.
<b>To disable:</b>	Press and hold a modifier key while you press another key.

#### Review previous lines

In Set-Up or through software, you can allocate the pages are assigned to each session, up to a total of nine pages. When **Review previous lines** is selected, the page memory allocation for a session becomes a *single page* and a *scroll back buffer*. You can then use **Ctrl**↑ and **Ctrl**↓ keys to scroll up or down to review lines previously scrolled off the screen. (Note: When this feature is enabled, the host cannot write to specific pages, and control codes from the host are ignored.)

## Defining Keys

### 4.1 Define Key Editor

#### Overview

This terminal provides a powerful Define Key Editor that allows you to modify the function of keys on your keyboard. Since keystrokes can perform many different functions, it will take some practice to understand how the keys work. This section is an introduction to customizing your keyboard.

#### Moving Standard Functions

The simplest way to re-program a key is to copy the behavior of another key. The following method allows you to move factory default key functions to any position on the keyboard:

1. From the **Keyboard** menu item, select the **Define key ...** function, and the **Define Key Editor** menu will appear.
2. Press the key you want to define.
3. Choose **Copy of key default** and press **Enter**.
4. Press the key you want to copy.
5. Choose the **OK** or **Apply** button and press **Enter**.

Names are displayed in the Set-Up language selected (not according to the keyboard language). They are truncated to 12 characters in the definition field. The ± symbol indicates a toggle feature. Copying does not affect the function of the key being copied. The terminal always copies the standard function of the chosen key, even if you have redefined that key. You can undo a mistake by copying the default values of a key to itself.

## Defining Keys

### 4.1 Define Key Editor

#### Function Keys

Function keys are used to transmit function key sequences or to perform local terminal functions such as the arrow keys (↑, ↓, ⇒, ⇐), the **Shift** modifier key, or the key that calls up the Set-Up menu (F3). A *User Defined Key* (UDK) is a special function key.

#### Modifier Keys

A modifier key is a key that modifies the behavior of other keys when it is pressed and held down. For example, pressing an alphanumeric key in combination with the **Shift** modifier key will normally send the shifted or uppercase characters for that key.

Modifier keys are treated as a special kind of local terminal function. The function modifier keys are: **Shift**, **Ctrl**, and **Alt**. Alphanumeric keys can also be modified by pressing **Group Shift** (**Alt Gr** on enhanced PC keyboards) and **AltShift** (**Shift-2**). Modifier keys themselves cannot normally be modified by other keys. A key assigned to act as the **Shift** modifier, for example, cannot transmit a function sequence when pressed in combination with the **Alt** key. Defining a key as a modifier key makes all assignable combinations of that key act as a modifier. Example: Changing the **<X>** key to delete when unshifted and to backspace when shifted.

#### 4.1.1 Creating a New Function

To define a new function key within the Define Key Editor:

1. From the **Keyboard** menu item, select the **Define key ...** function, and the **Define Key Editor** menu will appear.
2. Press the key you want to define.
3. Choose the **Function** button and press **Enter**. A screen similar to Figure 4-1 is displayed.
4. Press the modifier key sequence you want to define (unshifted, shifted, control, and so on) and press **Enter**.
5. Choose the desired function from the **Select function** scroll box and press **Enter**.

## Defining Keys

### 4.1 Define Key Editor

Figure 4-1 Define Key Editor, Select Function

**Define Key Editor**  
Available memory: 971

Press key to be defined: F6      Key number: 117

Define key as  
 UDK     Function     Alphanumeric     Copy of key default: \_\_\_\_

Modifiers:      Definition:      Select function:

Unshifted	No function	No function
Shifted	No function	Hold
<b>Control</b>	UDK Sequence	Print Page
Shift ctrl	No function	Set-Up
Alt	No function	Break
Alt-shift	No function	Hard Reset
Alt sh ctrl	No function	UDK Sequence

UDK: §,2;1SP}

UDK direction:     Normal     Terminal only     Host only

MA-0324-93.GRA

6. Repeat steps 4 and 5 to define other modifier sequences.

7. Choose the **OK** or **Apply** button and press **Enter**.

**Example:** Disabling the **Compose**, **Break**, or **Set-Up** key by assigning them to have no function.

#### 4.1.2 Creating a Key Sequence

To define a key sequence:

1. From the **Keyboard** menu item, select the **Define key ...** function, and the **Define Key Editor** menu will appear.
2. Press the key for which you want to define.
3. Choose the **UDK** button at the upper left and press **Enter**.
4. Choose the modifier sequence you want to define (unshifted, shifted, control, and so on) and press **Enter**.



## Defining Keys

### 4.1 Define Key Editor

5. Enter a key sequence, such as a print queue.  
Example: Print my file
6. Press the  key to select where the sequence is to be sent:
  - Normal To video screen and/or host depending on communication setting (on-line, half-duplex, local).
  - Terminal only To video screen only.
  - Host only To central host computer.
7. Choose the **OK** or **Apply** button.

---

#### NOTE

---

Pressing the Set-Up key to exit Set-Up will activate the OK button to keep any changes you have made. If you redefine a key, you can always restore the default key functions from the **Actions** menu in Set-Up.

---

# A

## Maintenance and Troubleshooting

### A.1 Cleaning your Video Terminal

#### Cleaning the Screen

Before cleaning the screen, set the terminal power switch to the off position and wait 20 seconds to let static electricity dissipate.

Clean the screen with a video screen cleaner.

#### Cleaning the Keyboard

If needed, wipe the keys with a soft cloth. Do not allow moisture to get under the keys.

### A.2 Troubleshooting

#### Identifying and Correcting Problems

The following can be sources of problems:

- Communications cables
- Host system
- Power or electrical sources
- Adjustment of brightness or contrast controls

**Troubleshooting Table**

Use Table A-1 to identify and correct any problem areas.

**Table A-1 Identifying and Correcting Problems**

Symptom	Possible Cause	Suggested Solution
The printer will not print.	Communication port is not set correctly.	From the <b>Communication</b> menu item, choose <b>Port select</b> and match the connections on the terminal.
	If you have a serial printer, its speed may be set incorrectly.	From the <b>Printer</b> menu item, choose <b>Serial print speed</b> and match the setting to the one in your printer manual.
Modifier keys remain in effect after released.	<b>Accessibility aid</b> is enabled.	Check keyboard indicator line for icon. This feature is enabled by pressing any modifier key five times. To disable, press and hold a modifier key and then press another key.
Screen is blank, but the LED is blinking.	Power Management feature is active.	Press any key on the keyboard. The monitor may need time to warm up.
Colors move on the screen. Display may be distorted, flickering, or rolling.	Electromagnetic interference is coming from other appliances.	Press degauss switch. If color problems cannot be corrected, then electromagnetic interference exists. Move any electromechanical device away from the terminal, or move the terminal.

(continued on next page)

**Table A-1 (Cont.) Identifying and Correcting Problems**

Symptom	Possible Cause	Suggested Solution
Green color is missing.	Green signal cable has a loose connection or is not connected to the terminal.	Check the cable connections.

**A.3 Installing the ROM Cartridge**

**Introduction**

This terminal can accommodate an optional ROM cartridge in its system box. This ROM cartridge will completely supersede the factory-installed software within the terminal for new software versions or special applications.

When an option ROM is not used, the ROM cartridge holder is empty with a cover over it.

**Installing and Removing the ROM Cartridge**

To install a ROM cartridge:

**CAUTION**

To prevent damage to the terminal, set the power switch to the off position before installing or removing the ROM cartridge.

1. Set the power switch to the off position.
2. Slide the ROM cover on the system box to uncover the ROM cartridge handle.
3. Pull the ROM cartridge handle out slightly to grasp it firmly; then, pull it straight out.
4. Plug the ROM cartridge into the system box and slide the cover over it.

## Maintenance and Troubleshooting

### A.3 Installing the ROM Cartridge

If you are having the terminal serviced, then remove and save the ROM cartridge.

To restore the firmware from the ROM cartridge:

1. Turn the power on and press **F3**.
2. Select **Actions** ▸ **Restore factory defaults** and press **Return**.
3. Select **Save settings** and press **Return**.

# B

## Specifications

### System Unit

The following are the specifications for the VT525 system unit.

Dimensions	With Stand	Without Stand
Height	34.3 cm (13.5 in)	5.0 cm (2.0 in)
Width	5.7 cm (2.25 in)	29.5 cm (11.6 in)
Depth	31.8 cm (12.5 in)	32.4 cm (12.75 in)
Weight	16.5 Kg (7.5 lbs)	14.3 Kg (6.5 lbs)
Operating Systems Supported	UNIX, MDOS, OpenVMS, OSF, ULTRIX, VMS, or any other that supports ASCII or ANSI protocols.	
Terminal Emulations	ANSI, PCTerm, and ASCII emulations: VT, WYSE, TVI, ADDS, or SCO console.	
Character Set Support	Multiple languages using ISO and IBM code pages; Set-Up selectable in five languages.	
Productivity Features	Local copy and paste Time-of-day clock—sound alarms and display messages; insert time into text. Desktop calculator—insert result into text Show character sets—insert character into text	
ROM cartridge support	4-Mbit (512 K byte) customer-installable ROM cartridge that completely replaces the factory-installed ROM code for new versions of the terminal's firmware.	

## Specifications

### Electrical Requirements

AC input voltage	110, 120, 220, 230, 240 Vac auto-sensing single phase, 3-wire
Line frequency	47 Hz to 63 Hz
Power consumption	15 watts maximum

**Operating Temperature** 10°C to 40°C (50°F to 104°F)

**Humidity** 10% to 90% relative humidity  
Maximum wet bulb = 28°C  
Minimum dew point = 2°C (noncondensing)

### Monitor Requirements

The VT525 requires a *multisync monitor* that supports **VGA 72 Hz** (37.8 KHz horizontal scan rate), with a 15-pin, D-Sub connector. Typically most monitors today meet these requirements.

### Keyboard

The terminal is designed to support industry-standard PS/2 compatible keyboards. Due to the large number of keyboard variations, it is not possible to test all of them in advance.

**Keyboards from some manufactures may not function correctly due to differences in their implementation of the standard.**

<b>Keyboard style</b>	LK411/LK412 for ANSI style layout; PCXAL for enhanced PC 101/102 style layout; available for most European languages.
<b>Protocol</b>	IBM enhanced PS/2-compatible
<b>Connector</b>	PS/2-style, 6-pin mini DIN
<b>Keyboard keys</b>	All keys are programmable for single characters, character sequences, or local functions.

## Specifications

<b>Compose characters</b>	Compose character are available in Multinational, ISO Latin 1, ISO Latin 2, ISO Latin-Greek, and National Replacement character sets (NRCS) for VT keyboards, except Canadian-English, Danish, Dutch, Hebrew, Hungarian, Italian, Norwegian, Polish, Romanian, Russian, SCS, Turkish-F, Turkish-Q, UK, and US keyboards.
<b>Nonvolatile memory</b>	970K bytes memory User-defined key maximum length = 255 bytes.

### Cables

Order Number	Length*	Connectors
<b>EIA-232 Serial Communication/Printer Cables</b>		
BC22E-10	3 m (10 ft)	25-pin D-sub f to 25-pin D-sub m
BC22E-25	7.6 m (25 ft)	
BC22D-xx	xx†	25-pin D-sub f to 25-pin D-sub f
<b>EIA-423 Communication Cables</b>		
BC16E-10	3 m (10 ft)	6-pin MMJ to 6-pin MMJ
BC16E-25	7.6 m (25 ft)	
<b>Parallel Printer Cables</b>		
BC19M-10	3 m (10 ft)	25-pin D-sub m to 36-pin Champ m

\*EIA-232 maximum cable length is 15.3 m (50 ft); EIA-423 maximum cable length is 305 m (1000 ft).  
†xx = length in feet (10, 25, 50)

# Specifications

## Communication/Printer Ports

**Serial** Bidirectional serial communication/printer ports with full modem support at 300 to 115.2K baud:

**EIA 232**

Comm 1 (Figure B-1):  
Two 25-pin D-sub m/f  
(use one or the other)

**EIA 423**

Comm 2 and 3 (Figure B-2):  
6-pin MMJ

**Parallel** Centronics (25-pin D-sub f) parallel printer connector (Figure B-3).

m = male; f = female

**Figure B-1 Comm1—Serial Communication/Printer Ports**



F



M

- 1 GND
- 2 TXD L
- 3 RXD L
- 4 RTS
- 5 CTS
- 6 DSR
- 7 SIG GND
- 8 CD
- 12 SI
- 20 DTR
- 23 SPD SEL L
- 9-11, 13-19, 21, 22, 24, 25

CCITT/EIA/DIN

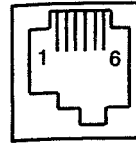
- 103/BA/D1
- 104/BB/D2
- 105/CA/S2
- 106/CB/M2
- 107/CC/M1
- 102/AB/E2
- 109/CF/M5
- 112/CI
- 108.2/CD/S1.2
- 111/CH/S4
- NC<sup>1</sup>

MA-0019-93.GRA

# Specifications

<sup>1</sup>NC = not connected.

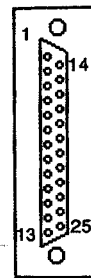
**Figure B-2 Comm2 and Comm3—MMJ Ports**



- 1 DTR
- 2 TXD L
- 3 GND
- 4 COM
- 5 RXD L
- 6 DSR

MA-0020-93.GRA

**Figure B-3 Parallel Printer Port (Bidirectional)**



F

- 1 STROBE L
- 2 DAT <0>
- 3 DAT <1>
- 4 DAT <2>
- 5 DAT <3>
- 6 DAT <4>
- 7 DAT <5>
- 8 DAT <6>
- 9 DAT <7>
- 10 ACKNLG L
- 11 BUSY
- 12 PE
- 13 SLCT
- 14 AUTO FEED XT L
- 15 ERROR L
- 16 INIT L
- 17 SLCT IN L
- 18 - 25 GND

MA-0018-93.GRA

## Specifications

### Power Cords

Order Number	Country	Amp	Length
BN19H-2E	Argentina, Australia, New Zealand	15A	3.5 m
BN19W-2E	Central Europe	15A	2.5 m
BN19W-2E	Brazil, Chile, Colombia, Paraguay, Uruguay	15A	2.5 m
BN19P-2E BN19P-03	Canada, U.S.	15A	1.9 m
BN19K-2E	Denmark	15A	2.5 m
BN19A-2E	Ireland, United Kingdom	15A	2.5 m
BN19S-2E	India, South Africa	15A	2.5 m
BN18L-2E	Israel	15A	2.5 m
BN19M-2E	Italy	15A	2.5 m
BN24T-2E	Switzerland	15A	2.5 m
BN26J-1K or (17-00083-xx)*	Bolivia, Colombia, Ecuador, Méjico, Venezuela	•	1.9 m

\*xx=-38 = 125V, 13A  
 -39 = 125V, 15A  
 -40 = 250V, 10A  
 -41 = 250V, 10A

## Specifications

### Standards Conformance

**Acoustic Noise** Preliminary declared values per ISO 9296 and ISO 7779:

Product <sup>1</sup>	Sound Power Level		Sound Pressure Level <sup>2</sup>	
	L <sub>W Ad, B</sub>		L <sub>p Am, dBA</sub>	
	Idle	Operate	Idle	Operate
VT525	<3.9	<3.9	<20	<20

<sup>1</sup>Current values for specific configurations are available from service representatives. (1 B = 10 dBA.)

<sup>2</sup>Operator position.

**Table B-1 Standards Conformance and Approvals**

Type	Standard	Subject
Communications	EIA 423 EIA 232-E	Serial communications
	CCITT V.24 and V.28 NET 2 test report	Serial communications -- Australia PTT German PTT Japan PTT Sweden PTT
	CISPR-22 Class B CSA 108.8	Electromagnetic compatibility DOC Canada North American Class B version
EMI/RFI	FCC part 15 Class B Vfg 243/91, Amd Vfg 46/92 Class B	Electromagnetic compatibility
	CE Class B (EN55022 Class B, EN50082-1 Class 1) EN60555-2	Radio Protection Mark CE label

(continued on next page)

**Table B-1 (Cont.) Standards Conformance and Approvals**

Type	Standard	Subject
	ITE Class 2 (Japan)	VCCI Electromagnetic compatibility
Energy	"Energy Star"	EPA Energy Star requirements
Ergonomic	ZH1/618, GS-VS-SG7,	TÜV Ergonomic Requirements
Safety	CSA 22.2 #950 M1989	Safety of Information Technology Equipment Including Electrical Business Equipment (Canada)
	AS3260	Australia product safety
	DHHS rules 21 CFR, Subchapter J	U.S.A. DHHS (FDA)
	TÜV EN60950 (IEC 950) 2nd ed (1988) EN60950 (Amd 1 & 2, 1990)	Safety of Information Technology Equipment Including Electrical Business Equipment
	SS 436 14 90, MPR II; VDE0805 and Amd	GS-Mark (Geprüfte Sicherheit)
	EMKO-TSE (74-SEC) 203/92, DEMKO, NEMKO, SEMKO	Nordic Country Approvals
	UL 544 (2nd ed)	Standard for Medical and Dental Equipment
	UL 1950 (2nd ed)	Safety of Information Technology Equipment Including Electrical Business Equipment

**EMI Requirements for Canadian Market** This equipment does not exceed the Class B limits for radio noise emissions from digital apparatus as set out in the Radio Interference Regulation of the Canadian Department of Communications.

**Asbestos** Asbestos is not used in this product or in its manufacturing process.

**Flame Retardants** The thermoplastic enclosures do not contain polybrominated diphenylether (PBDE) as a flame retardant additive; therefore, they do not emit toxic dibenzofuran and dibenzodioxin gases.

**PVC** The plastic enclosures are not made of rigid PVC. The material has a non-halogenated, flame-retardant system and is cadmium free.

**Ozone Depleting Substance** The VT525 is in full compliance with the labeling requirements in the U.S. Clean Air Act Amendments of 1990. It does not contain, nor is it manufactured with, a Class 1 ODS, as defined in Title VI Section 611 of this act.

**Disposing of your Terminal**

**Warning**

If you need to dispose of your terminal, ask a qualified service representative for the proper disposal procedures. Improper disposal could result in personal injury. The terminal can be returned for proper disposal.