

46504

**TD700/TD800  
INPUT AND  
DISPLAY SYSTEM**

**KEYBOARD ASSEMBLY A1**

**Burroughs**

**FIELD TEST  
AND  
REFERENCE DOCUMENT**



PROPERTY OF AND TO BE RETURNED TO

**Burroughs**

PRINTED JULY 1974

TD700/TD800 Field Test and Reference Document Index.

Keyboard Assembly A1

Subassembly designation list

Keyboard Indicator Schematic (8-light) 1696 2623 (A)  
(Used on keyboard without paging option)

Keyboard Indicator Schematic (12-light) 1696 2615 (B)  
(Used on keyboards with paging option)

Keyboard Assembly Diagram (Refer to 1699 7066 for  
keyboard assembly number)

MOS Encoders (Cross Reference List) 1699 7066 (C)

Keyboard Schematic - Microswitch 64SW5-2  
(all keyboards)

Input Codes to MOS Encoder, Pin Chart 2552 9355 (A)  
3 Sheets

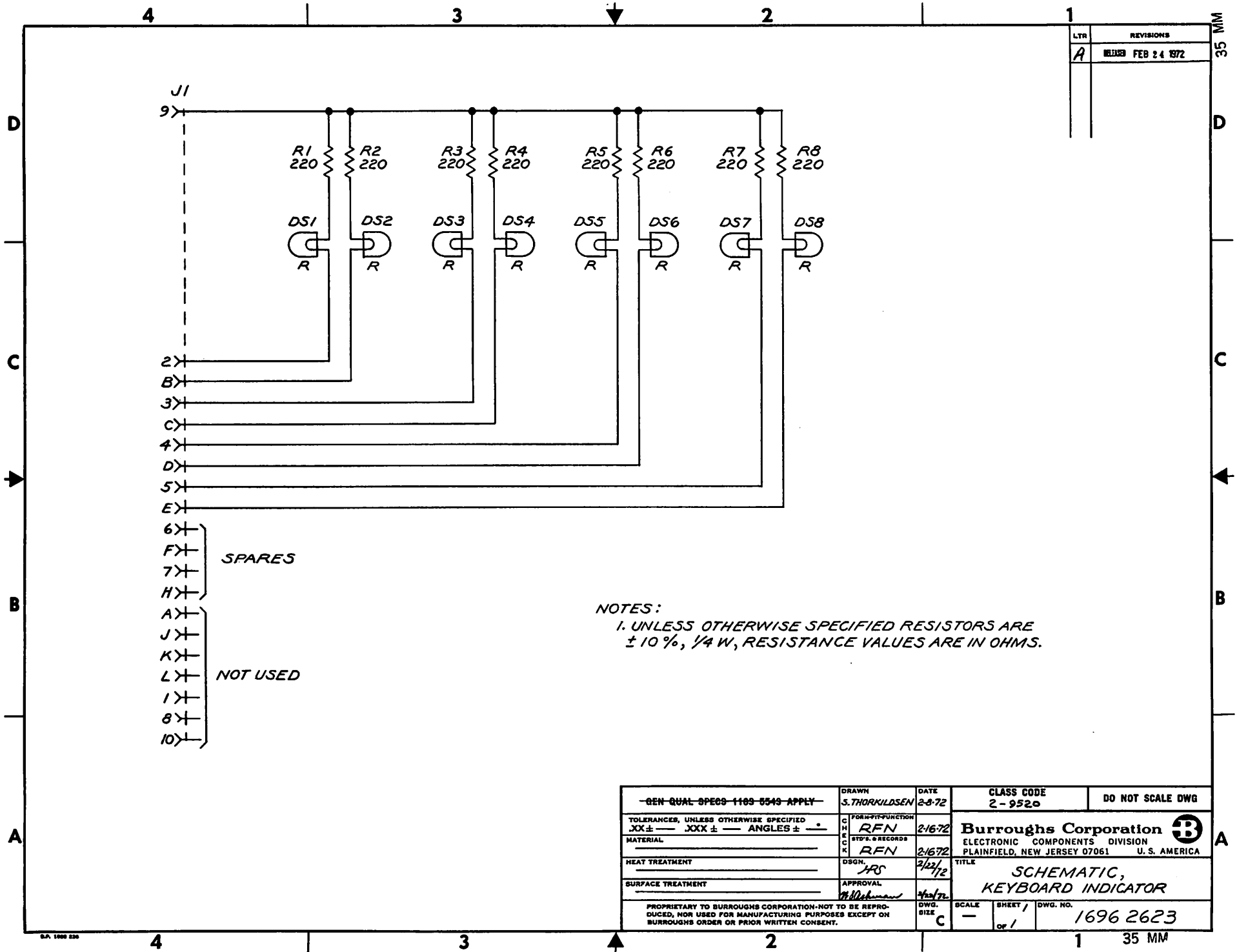
Harness Assembly (A1W1) 1696 4603 (C)  
(all keyboards)

Cable Assembly W2 1696 3571 (L)  
(all keyboards)

KEYBOARD ASSEMBLY A1


SUBASSEMBLY DESIGNATION LIST

- A1A1 Housing Assembly (Chassis & Cover)
- A1A2 Keyboard Chassis Assembly
- A1A3 Keyboard Indicator Assembly
- A1W1 Internal Cable Assembly (from A1A2 to A1A3)
- W2 External Cable Assembly



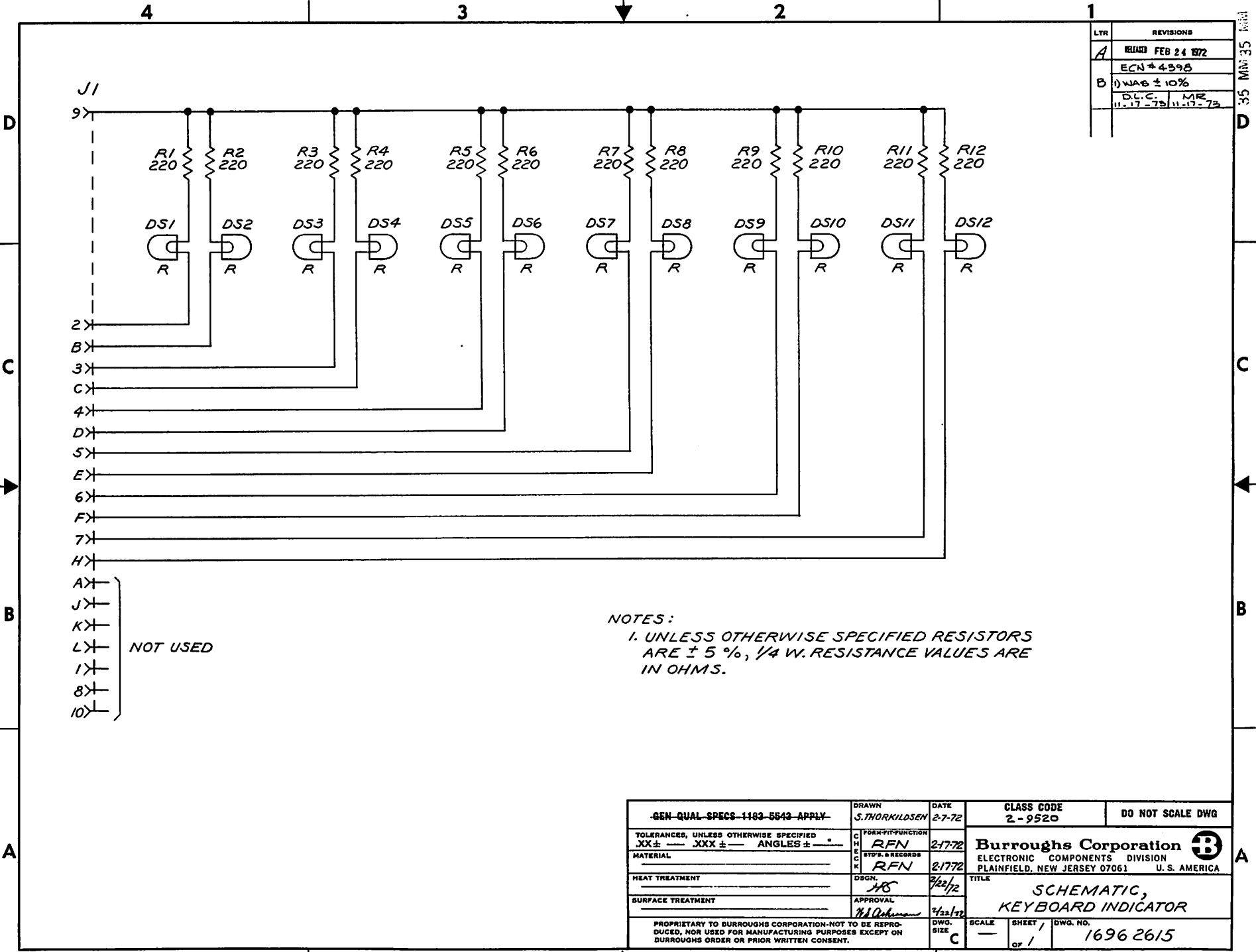
LTR	REVISIONS
A	RELEASED FEB 24 1972

NOTES:  
 1. UNLESS OTHERWISE SPECIFIED RESISTORS ARE  $\pm 10\%$ ,  $1/4 W$ , RESISTANCE VALUES ARE IN OHMS.

- GEN QUAL SPECS 1189-8549 APPLY -		DRAWN S. THORKILDSEN	DATE 2-8-72	CLASS CODE 2-9520	DO NOT SCALE DWG
TOLERANCES, UNLESS OTHERWISE SPECIFIED XX ± — .XXX ± — ANGLES ± — °		FOR PART-FUNCTION RFN	2-16-72	<b>Burroughs Corporation</b>  ELECTRONIC COMPONENTS DIVISION PLAINFIELD, NEW JERSEY 07061 U. S. AMERICA	
MATERIAL		STG'S & RECORDS RFN	2-16-72		
HEAT TREATMENT		DSGN. JRS	2/22/72	TITLE SCHEMATIC, KEYBOARD INDICATOR	
SURFACE TREATMENT		APPROVAL <i>M. Dehman</i>	4/2/72	SCALE —	
PROPRIETARY TO BURROUGHS CORPORATION-NOT TO BE REPRODUCED, NOR USED FOR MANUFACTURING PURPOSES EXCEPT ON BURROUGHS ORDER OR PRIOR WRITTEN CONSENT.		DWG. SIZE C	SHEET / OF 1	DWG. NO. 1696 2623	

35 MM  
 D  
 C  
 B  
 A  
 35 MM

LTR	REVISIONS
A	RELEASE FEB 24 1972
	ECN # 4998
B	1) WAS ± 10%
	D.L.C. MR
	11-17-73 11-17-73



-GEN QUAL SPECS 1183-5543 APPLY-		DRAWN S. THORKILSEN	DATE 2-7-72	CLASS CODE 2-9520	DO NOT SCALE DWG
TOLERANCES, UNLESS OTHERWISE SPECIFIED XX ± .XXX ± ANGLES ± °		FORM-FIT-FUNCTION RFN	21772	<b>Burroughs Corporation</b> ELECTRONIC COMPONENTS DIVISION PLAINFIELD, NEW JERSEY 07061 U.S. AMERICA	
MATERIAL		STD'S. & RECORDS RFN	21772		
HEAT TREATMENT		DGDN. JAS	3/22/72	TITLE SCHEMATIC, KEYBOARD INDICATOR	
SURFACE TREATMENT		APPROVAL W. J. Robinson	3/22/72	DWG. NO. 1696 2615	
PROPRIETARY TO BURROUGHS CORPORATION-NOT TO BE REPRODUCED, NOR USED FOR MANUFACTURING PURPOSES EXCEPT ON BURROUGHS ORDER OR PRIOR WRITTEN CONSENT.		DWG. SIZE C	SCALE -	SHEET / OF 1 /	DWG. NO. 1696 2615


MOS ENCODER DEVICE NUMBER	VENDOR PART NO.	STYLE	NATIONALITY	MOS CODE DEFINITION (KEYBOARD ASSEMBLY NO.)
1699 6035	SW20233	TYPEWRITER	UNITED STATES (TYPE 1)	1696 9297
1699 6043	SW20251	TYPEWRITER	UNITED STATES (TYPE 2)	1699 4709
1699 6043	SW20251	TYPEWRITER	FRANCE/BELGIUM	1699 4550
1699 6050	SW20253	TYPEWRITER	FRANCE/BELGIUM (OPTIONAL)	1699 4576
1699 6043	SW20251	TYPEWRITER	ITALY	1699 4618
1699 6043	SW20251	TYPEWRITER	SPAIN/LATIN AMERICA	1699 4535
1699 6043	SW20251	TYPEWRITER	UNITED KINGDOM	1699 4519
1699 6068	SW20254	TYPEWRITER	GERMANY/AUSTRIA/SWITZERLAND	1699 4592
1699 6076	SW20252	TYPEWRITER	PORTUGAL/BRAZIL	1699 4634
1699 6076	SW20252	TYPEWRITER	SOUTH AFRICA	1699 4659
1699 6084	SW20255	TYPEWRITER	SWEDEN/FINLAND	1699 4675
1699 6092	SW20256	TYPEWRITER	NORWAY/DENMARK	1699 4691
1627 2882	SW20246	DATA PREP	UNITED STATES (TYPE 1)	1699 3065
1699 6100	SW20257	DATA PREP	FRANCE/BELGIUM	1699 4543
1699 6118	SW20259	DATA PREP	FRANCE/BELGIUM (OPTIONAL)	1699 4568
1699 6100	SW20257	DATA PREP	ITALY	1699 4600
1699 6100	SW20257	DATA PREP	SPAIN/LATIN AMERICA	1699 4527
1699 6100	SW20257	DATA PREP	UNITED KINGDOM	1699 4501
1699 6126	SW20260	DATA PREP	GERMANY/AUSTRIA/SWITZERLAND	1699 4584
1699 6134	SW20258	DATA PREP	PORTUGAL/BRAZIL	1699 4626
1699 6134	SW20258	DATA PREP	SOUTH AFRICA	1699 4642
1699 6142	SW20261	DATA PREP	SWEDEN/FINLAND	1699 4667
1699 6159	SW20262	DATA PREP	NORWAY/DENMARK	1699 4683
1627 2866	SW20235	TYPEWRITER	UNITED STATES (TYPE 0)	1696 3357
1699 6043	SW20251	TYPEWRITER	UNITED STATES, ASCII (CER 3045A)	2552 3580

LTR	REVISION
	ECN 4647
C	REVISED & RE-DRAWN
	GK FEB 5-22-74 5/24/74

NOTE:

- FOR MOS ENCODER GENERAL SPECIFICATION SEE 1696 9396


STATUS OF SHEETS	
2	C
1	C

-GEN QUAL SPECS 1103-5543 APPLY-		DRAWN GP	DATE 10-24-72	CLASS CODE 2-7052	DO NOT SCALE DWG
TOLERANCES, UNLESS OTHERWISE SPECIFIED .XX± — .XXX± — ANGLES± °		FORM-FIT-FUNCTION RFN	10-26-72	 <b>Burroughs Corporation</b> ELECTRONIC COMPONENTS DIVISION PLAINFIELD, NEW JERSEY 07061 U. S. AMERICA	
MATERIAL		STDS. & RECORDS RFN	10-26-72		
HEAT TREATMENT		DESIGN WSA	10-26-72	TITLE MOS ENCODER DEVICE	
SURFACE TREATMENT		APPROVAL WSA	10-26-72		
PROPRIETARY TO BURROUGHS CORPORATION-NOT TO BE REPRODUCED, NOR USED FOR MANUFACTURING PURPOSES EXCEPT ON BURROUGHS ORDER OR PRIOR WRITTEN CONSENT.		DWG. SIZE B	SCALE —	SHEET OF 2	DWG. NO. 1699 7066

MOS ENCODER DEVICE NUMBER	VENDOR PART NO.	STYLE	NATIONALITY	MOS CODE DEFINITION (KEYBOARD ASSEMBLY NO.)
2551 1445	SW20266	TYPEWRITER	B9348 ODT	2551 1452
2551 2542	SW20264	TYPEWRITER	KATAKANA, TYPE 1	2551 1510
2551 1239	SW20267	TYPEWRITER	UNITED STATES UPPER/LOWER CASE	2551 1221
2551 1239	SW20267	TYPEWRITER	ISRAELI	2551 1528
2552 4505	SW20285	TYPEWRITER	LATIN/CYRILLIC	2551 1536
2551 9182	SW20279	NUMERIC	UNITED STATES	1699 5342
2552 4406	SW20284	TYPEWRITER	KATAKANA, TYPE 2	2552 4414
1627 2882	SW20246	DATA PREP	UNITED STATES, TYPE 1 (MODIFIED)	2551 3862

LTR	REVISION	
C	ECN 4647	
	THIS SHEET ADDED	
	GK 5-22-74	FEB 5/24/74

35 MM

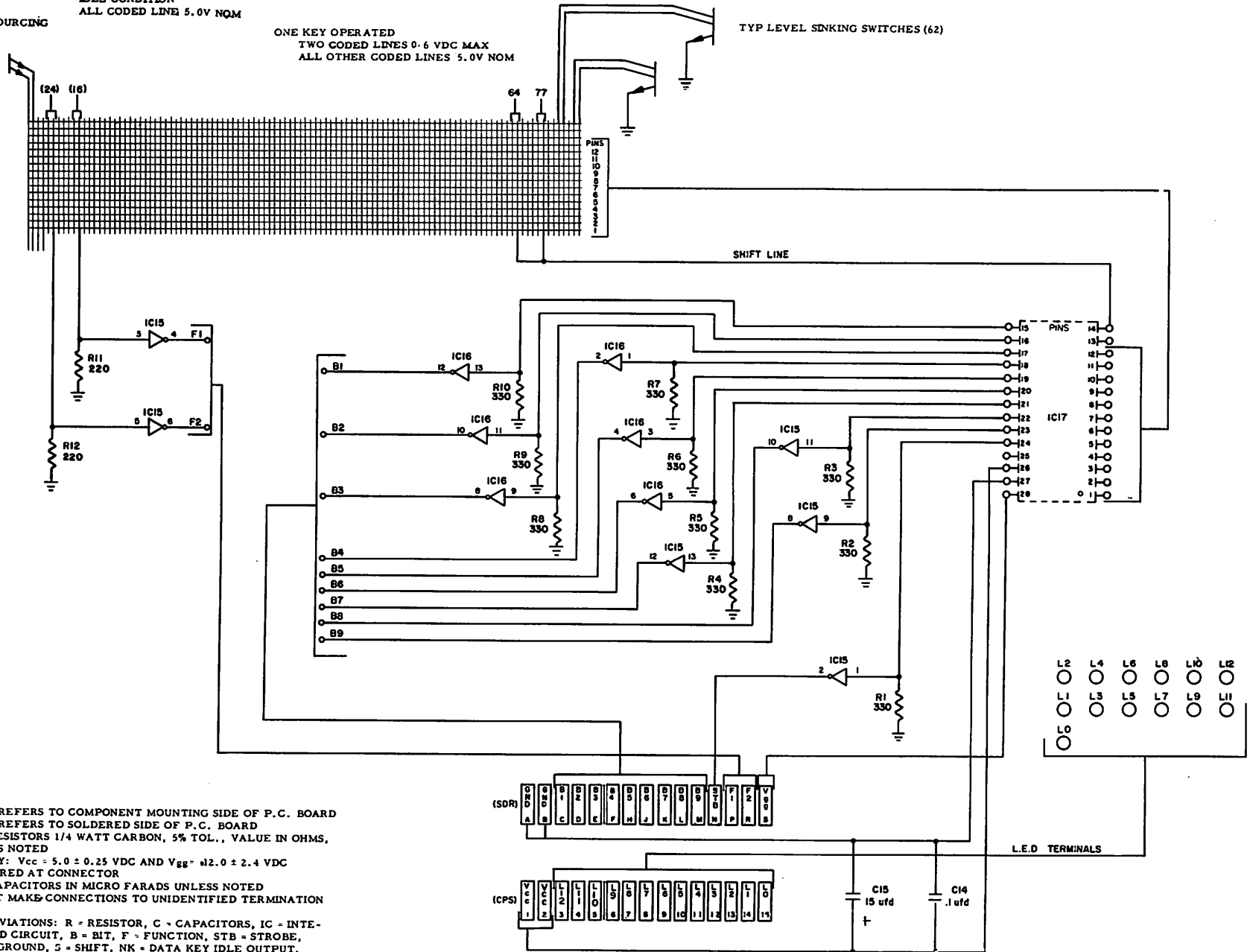
<b>—GEN QUAL SPECS 1103-5543 APPLY—</b>		DRAWN	DATE	CLASS CODE	DO NOT SCALE DWG
TOLERANCES, UNLESS OTHERWISE SPECIFIED .XX± — .XXX± — ANGLES± °		GP	10-24-72		
MATERIAL	FORM-FIT-FUNCTION				 <b>Burroughs Corporation</b> ELECTRONIC COMPONENTS DIVISION PLAINFIELD, NEW JERSEY 07061 U. S. AMERICA
HEAT TREATMENT	STD'S. & RECORDS				
SURFACE TREATMENT	DSCV.				
PROPRIETARY TO BURROUGHS CORPORATION—NOT TO BE REPRODUCED, NOR USED FOR MANUFACTURING PURPOSES EXCEPT ON BURROUGHS ORDER OR PRIOR WRITTEN CONSENT.		APPROVAL		TITLE	
DWG. NO.		SCALE		SHEET	DWG. NO.
1699 7066		OF 2		2	1699 7066

TYP LEVEL SOURCING  
(2 KEYS)  $\Delta$

IDLE CONDITION  
ALL CODED LINE 5.0V NOM

ONE KEY OPERATED  
TWO CODED LINES 0-6 VDC MAX  
ALL OTHER CODED LINES 5.0V NOM

TYP LEVEL SINKING SWITCHES (62)



NOTES

- A "CPS" REFERS TO COMPONENT MOUNTING SIDE OF P.C. BOARD  
"SDR" REFERS TO SOLDERED SIDE OF P.C. BOARD
  - B ALL RESISTORS 1/4 WATT CARBON, 5% TOL., VALUE IN OHMS, UNLESS NOTED
  - C SUPPLY:  $V_{cc} = 5.0 \pm 0.25$  VDC AND  $V_{gg} = -12.0 \pm 2.4$  VDC MEASURED AT CONNECTOR
  - D ALL CAPACITORS IN MICRO FARADS UNLESS NOTED
  - E DO NOT MAKE CONNECTIONS TO UNIDENTIFIED TERMINATION PADS
  - F ABBREVIATIONS: R - RESISTOR, C - CAPACITORS, IC - INTEGRATED CIRCUIT, B - BIT, F - FUNCTION, STB - STROBE, GND - GROUND, S - SHIFT, NK - DATA KEY IDLE OUTPUT, PAR - PARITY, CE - KEYBOARD ENABLE, Q - TRANSISTOR, FE - FLIP-FLOP ENABLE
- $\Delta$  LEVEL SOURCING ARE INDICATED BY PARENTHESIS AROUND SWITCH STATION

MOS ENCODED 9 BIT NEG LOGIC,  
NEG STROBE, TWO KEY ROLLOVER

<b>MICRO SWITCH</b>		THIS DRAWING COVERS A PORTION OF THE PROPERTY OF MICRO SWITCH, A DIVISION OF HONEYWELL. THIS DRAWING IS NOT TO BE COPIED OR USED WITHOUT THE APPROVAL OF MICRO SWITCH.	
DATE: <b>RCR19 JAN 72</b>	REPLACES:	REV:	REV:
DATE: <b>R15 2 FEB 72</b>	CUSTOMER: <b>BURROUGHS CORP.</b>	REV:	REV:
DATE: <b>LVA 2 FEB 72</b>	SP-28-07071-15	REV:	REV:
DRAWING NUMBER <b>W 64SW5-2</b>		PAGE 1 OF 1	
DRAWING NUMBER <b>W 64SW5-2</b>		CHANGED BY <b>KR</b>	

TOOL  
DEV NO.



**Burroughs Corporation**  
 ELECTRONIC COMPONENTS DIVISION  
 PLAINFIELD, NEW JERSEY 07061 U.S. AMERICA



DWG. NO. 25529355  
 DATE 5-17-74  
 SHEET 1 OF 3

TITLE INPUT CODES TO MOS KEYBOARD ENCODERS,  
 TD700/TD800/B9348

REVISION		STATUS OF SHEETS														DESCRIPTION	DRAFTSMAN	CHECKER			
LTR	NUMBER	1	2	3	4	5	6	7	8	9	10	11	12	13	14				15	16	
A		A	A	A															RELEASED MAY 23 1974		

CLASS CODE  
 2-9520

**Burroughs Corporation**  
 ELECTRONIC COMPONENTS DIVISION  
 PLAINFIELD, NEW JERSEY 07061 U. S. AMERICA



SHEET 2 of 3	DWG NO. 2552 9355	REV A
CLASS CODE 2-9520	TITLE INPUT CODES TO MOS KEYBOARD TD700/TD800/B9348	
DRAWN BY C.T	CHK STD & REC MR	CHECK FF & F MR
DATE 5.17.74	DATE 5.17.74	DATE 5.23.74
	DATE 5.17.74	DATE 5.23.74

PROPRIETARY TO BURROUGHS CORPORATION-NOT TO BE REPRODUCED, NOR USED FOR MANUFACTURING PURPOSES EXCEPT ON BURROUGHS ORDER OR PRIOR WRITTEN CONSENT.

LTR	REVISION
-----	----------

NUMERIC, INPUT CODES TO MOS CHIP

<u>KEY NUMBER</u>	<u>MOS PIN NUMBER</u>
1	6, 7
2	7, 8
3	6, 8
4	6, 9
5	5, 9
6	1, 2
7	1, 3
8	1, 4
9	1, 5
10	1, 6
11	1, 7
12	FUNCTION 1
13	1, 8
14	2, 3
15	2, 4
16	2, 5
17	2, 6
18	2, 7
19	2, 8
20	2, 9
21	8, 9
22	3, 4
23	3, 5
24	3, 6
25	3, 7
26	SHIFT
27	3, 8
28	3, 9
29	5, 8
30	4, 5
31	4, 6
32	4, 7
33	4, 8
34	4, 9
35	FUNCTION 2
36	5, 6
37	5, 7

**Burroughs Corporation**  
 ELECTRONIC COMPONENTS DIVISION  
 PLAINFIELD, NEW JERSEY 07061 U. S. AMERICA



SHEET 2 OF 3	DWG NO. 25529355		REV A
CLASS CODE	TITLE INPUT CODES TO MOS KEYBOARD TD700/TD800/83349		
DRAWN BY 2.T	CHK STD & REC	CHECK FF & F	DSGN
DATE	DATE	DATE	DATE
APPROVED		DATE	

PROPRIETARY TO BURROUGHS CORPORATION-NOT TO BE REPRODUCED, NOR USED FOR MANUFACTURING PURPOSES EXCEPT ON BURROUGHS ORDER OR PRIOR WRITTEN CONSENT.

LTR REVISION

TYPEWRITER and DATA PREPARATION

INPUT CODES TO MOS CHIP

<u>KEY NUMBER</u>	<u>MOS PIN NUMBER</u>
1	7,12
2	8,12
3	9,12
4	10,12
5	11,12
6	5,7
7	1,4
8	1,3
9	1,2
10	1,5
11	1,6
12	1,7
13	1,8
14	1,9
15	1,10
16	1,11
17	1,12
18	6,12
19	10,11
20	FUNCTION 2
21	2,4
22	2,3
23	2,5
24	2,6
25	2,7
26	2,8
27	2,9
28	2,10
29	2,11
30	2,12
31	6,9
32	6,11
33	6,10
34	7,8
35	—
36	3,4
37	3,5
38	3,6
39	3,7
40	3,8

<u>KEY NUMBER</u>	<u>MOS PIN NUMBER</u>
41	3,9
42	3,10
43	3,11
44	3,12
45	5,12
46	5,11
47	5,10
48	SHIFT
49	5,6
50	4,5
51	4,6
52	4,7
53	4,8
54	4,9
55	4,10
56	4,11
57	4,12
58	8,9
59	8,11
60	8,10
61	SHIFT
62	6,8
63	FUNCTION 1
64	6,7
65	5,9
66	—
67	—
68	9,10
69	—
70	—
71	—
72	9,11
73	7,9
74	7,11
75	7,10

NOTE 1: VENDOR FOR KEYBOARD ENCODERS IS MICROSWITCH

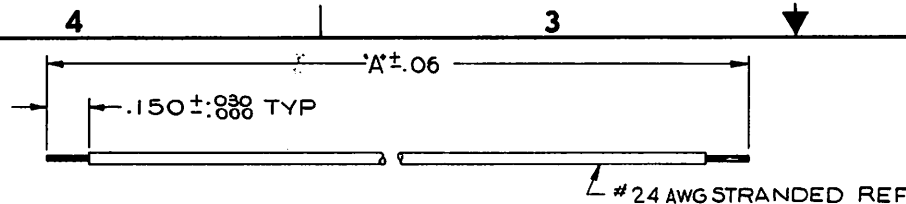


FIG. 1

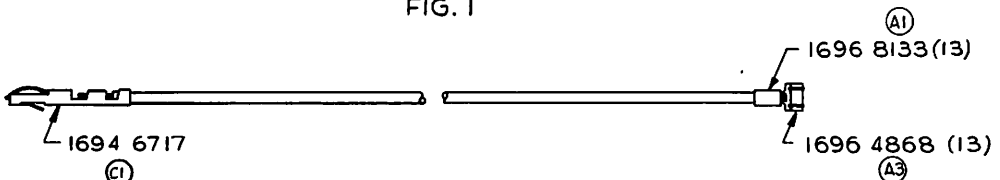
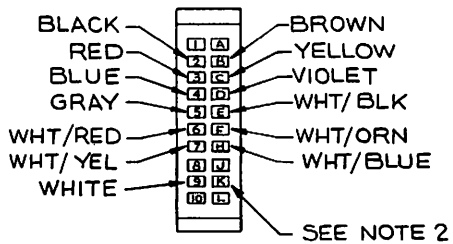
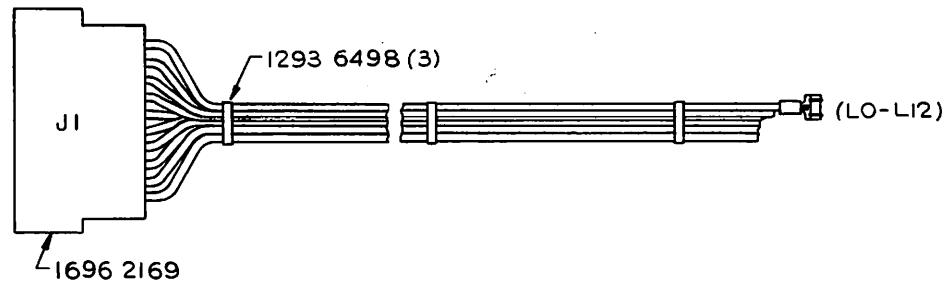


FIG. 2



VIEW SHOWING LEAD LOCATIONS (RECEPTACLE SHOWN FROM LEAD END)

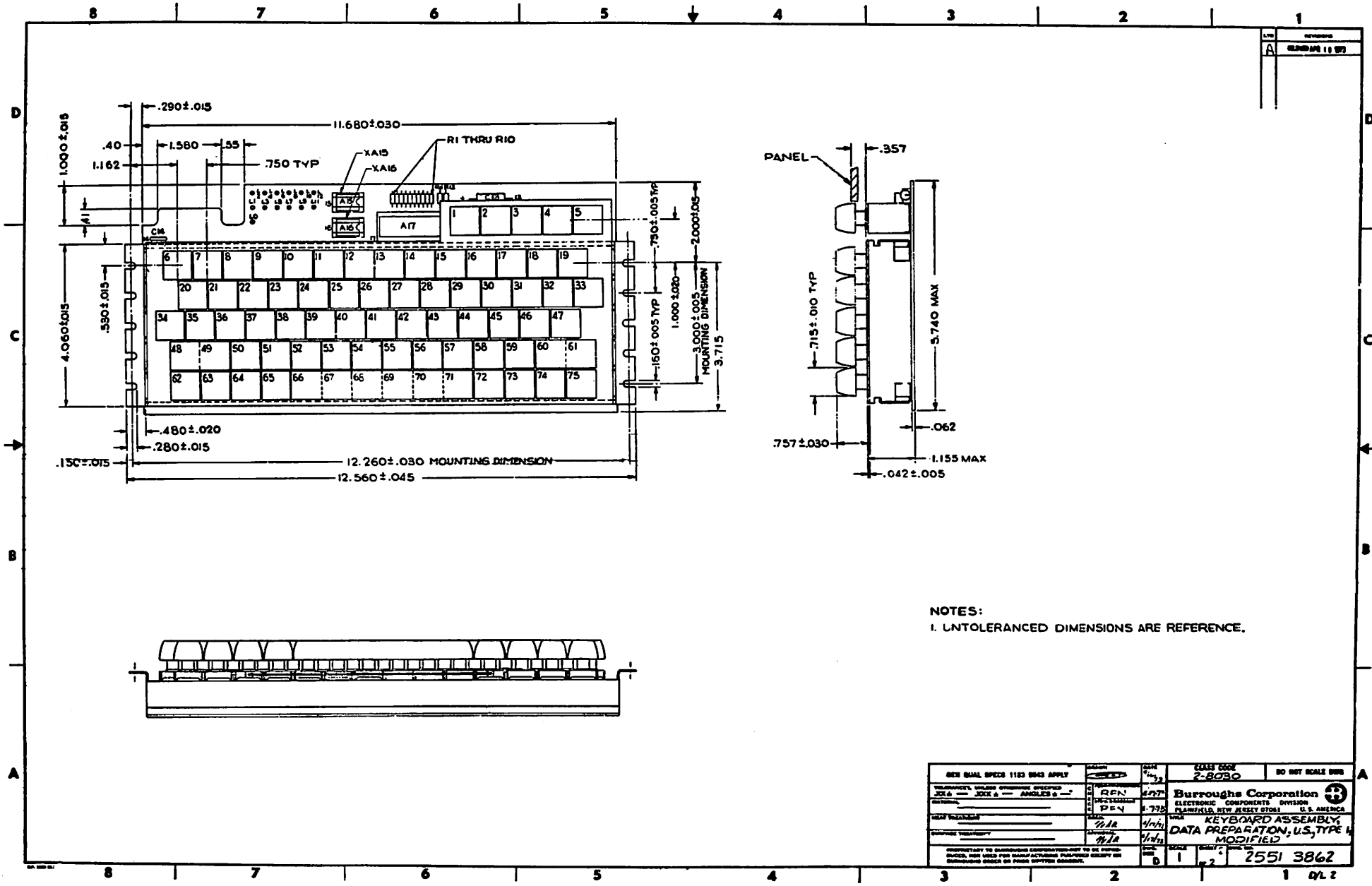
LTR	REVISIONS
	ESR # 9985
	(1)(2) ADDED
	(3) WAS 1696 7002
A	APZ 5-24-72 RFN 5-30-72
B	ECN # 4065
	(1)(2) 1694 6717 WAS 1694 6733
	SFB 11-18-72 RFN 11-22-72

NOTES:

1. POLARIZING KEY, PT NO. 1696 2342, INSERTED BETWEEN PINS 7 & 8 ON CONNECTOR, PT NO. 1696 2169.
2. INSERT BLANK CONTACT 1694 6717 WITH INSULATION AND WIRE AREA FLATTENED. (A2) (C2)

WIRE MATL NO.	WIRE PT NO. FIG. 1	WIRE COLOR	DIM. 'A'	TERMINATED WIRE NO. FIG. 2	CIRCUIT MNEMONIC
1295 2719	1696 4355	WHITE	9.50	1696 4470	XP5V__O
1295 2727	1696 4363	BLACK		1696 4488	VXMTM__O
1295 2776	1696 4371	BROWN		1696 4496	VRCVM__O
1295 2735	1696 4389	RED		1696 4504	VLCLM__O
1295 2784	1696 4397	YELLOW		1696 4512	CFORM__O
1295 2768	1696 4405	LT. BLUE		1696 4520	KPNT__O
1295 2792	1696 4413	VIOLET		1696 4538	VERR__O
1295 2800	1696 4421	GREY		1696 4546	VENQ__O
1295 2818	1696 4439	WHT/BLK		1696 4553	ALTA1__O
1295 2826	1696 4447	WHT/RED		1696 4561	EPG4__O
1299 5833	1696 4454	WHT/YEL		1696 4579	EPG3__O
1299 5841	1696 4462	WHT/BLUE		1696 4587	EPG2__O
1295 2842	1696 4140	WHT/ORN	9.50	1696 4595	EPG1__O

GEN QUAL SPECS 1183 5543 APPLY		DRAWN APZ	DATE 3-11-72	CLASS CODE 2-1522	DO NOT SCALE DWG
TOLERANCES, UNLESS OTHERWISE SPECIFIED XX ± — XX ± — ANGLES ± — °		FOR PART/FUNCTION RFN	4-1272	<b>Burroughs Corporation</b> ELECTRONIC COMPONENTS DIVISION PLAINFIELD, NEW JERSEY 07061 U. S. AMERICA	
MATERIAL		BY DESIG. & RECORDS RFN	4-1272		
HEAT TREATMENT		DESIGN 1/8	4/19/72	TITLE HARNESS ASSEMBLY, DETAILED, KEYBOARD PC BOARD TO LED BOARD (WI)	
SURFACE TREATMENT		APPROVAL 1/8	4/19/72		
PROPRIETARY TO BURROUGHS CORPORATION-NOT TO BE REPRODUCED, NOR USED FOR MANUFACTURING PURPOSES EXCEPT ON BURROUGHS ORDER OR PRIOR WRITTEN CONSENT.		DWG. SIZE C	SCALE 1	SHEET 1	DWG. NO. 1696 4603



REV	REVISION
A	REVISION 11 1971

NOTES:  
 1. INTOLERANCED DIMENSIONS ARE REFERENCE.

SEE SERIAL SPECS 1183 8043 APPLY	DESIGN	DATE	CLASS CODE	DO NOT SCALE DIMS
UNLESS OTHERWISE SPECIFIED JOZE 6 — JOZE 6 — ANGLES 0 — FINISH	212	11/72	2-8030	
KEY MATERIAL	212	11/72	Burroughs Corporation ELECTRONIC COMPONENTS DIVISION PLAINFIELD, NEW JERSEY 07061 U.S. AMERICA	
SHIPPING WEIGHT	212	11/72	KEYBOARD ASSEMBLY, DATA PREPARATION, U.S. TYPE MODIFIED	
QUANTITY TO MANUFACTURE	212	11/72	1	2551 3862
QUANTITY TO MANUFACTURE	212	11/72	1	2551 3862



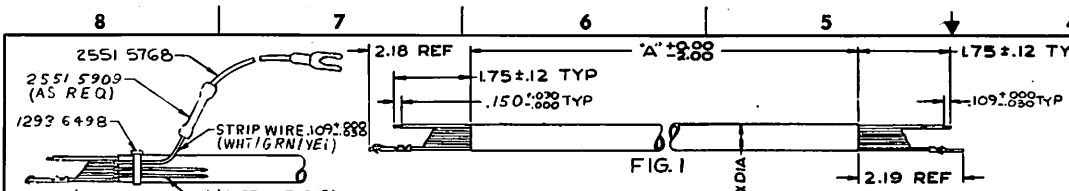
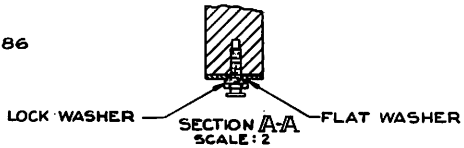
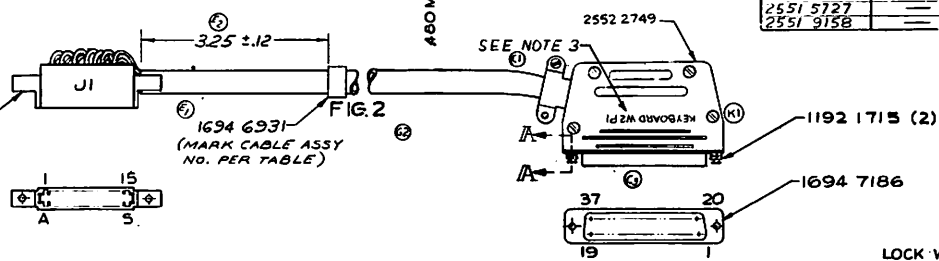


FIG 2	FIG 1	FIG 3	A'DIM	CABLE MATERIAL NO.	COLOR	SUPERSEDED BY
1696 3530	1696 3545	---	12.00	1691 2057	GRAY	2551 5701
1696 3563	1696 3555	---	84.00	1691 2057	GRAY	2551 5727
2552 1857	---	2551 9166	32.00	2551 5040	GRAY	2551 4159
2552 1865	---	2552 1873	84.00	1691 2057	GRAY	2551 5727
2551 4159	---	2551 4167	32.00	2551 5057	BLACK	---
2551 5669	---	2551 5677	12.00	2551 5040	GRAY	2551 5701
2551 5685	---	2551 5693	84.00	2551 5040	GRAY	2551 5727
2551 5701	---	2551 5719	12.00	2551 5057	BLACK	---
2551 5727	---	2551 5735	84.00	2551 5057	BLACK	---
2551 9158	---	2552 1840	32.00	1691 2057	GRAY	2551 4759



WIRE COLOR	WIRE SIZE(REF)	PIN CONTACT PART NO.	PIN LOCATION	CIRCUIT MNEMONIC
BLUE	20	1694 6717	1	XP5V_1
BLU/WHT	20	1694 6717	2	AGRD_0
WHT/RED/GRY	TP 28	1694 6733	3	VXM1M_0
WHT/ORG/GRN	---	---	---	XGRD_0
WHT/BRN/GRN	TP 28	---	---	XGRD_0
WHT/RED/VIO	TP 28	1694 6733	4	VRCVM_0
WHT/RED/BLU	TP 28	1694 6733	5	VLCLM_0
WHT/RED/GRN	---	---	---	XGRD_0
WHT/GRN/GRY	TP 28	---	---	XGRD_0
WHT/RED/YEL	TP 28	1694 6733	6	CFORM_0
WHT/RED/BLK	TP 28	1694 6733	7	KPNT_00
WHT/GRN/RED	---	---	---	XGRD_0
WHT/GRN/GRN	---	---	---	XGRD_0
WHT/RED/BRN	TP 28	1694 6733	8	VENG_0
WHT/BLK/YEL	---	---	---	VERR_0
WHT/GRN/ORG	TP 28	---	10	ALTA_0
WHT/BLK/RED	---	---	---	EPG4_0
WHT/GRN/BRN	TP 28	---	12	EPG3_0
WHT/BLK/BLK	TP 28	---	13	EPG2_0
WHT/GRN/BLK	---	---	---	EPG1_0
WHT/BLK/BRN	TP 24	1694 6733	15	XP5V_1
WHT/GRN/YEL	TP 24	1694 6816	16	XFRAME0
GRN/YEL	20	1694 6717	A	XGRD_0
GRN/WHT	20	1694 6717	B	XGRD_0
WHT/BLK	20	1694 6733	C	XD1_0
WHT/BRN	28	---	---	XD2_0
WHT/RED	28	---	---	XD3_0
WHT/ORG	28	---	---	XD4_0
WHT/YEL	28	---	---	XD5_0
WHT/GRN	28	---	---	XD6_0
WHT/BLU	28	---	---	XD7_0
WHT/BLK/GRN	TP 28	---	---	XD8_0
WHT/BLK/BLU	TP 28	---	---	XD9_0
WHT/RED/RED	TP 28	1694 6733	N	XD5_0
WHT/GRN/BLU	---	---	---	XGRD_0
WHT/GRN/RED	TP 28	1694 6733	P	XINS_0
WHT/RED/ORG	28	1694 6733	Q	XRP_0
WHT/VIO	28	1694 6717	R	XN12V_1
GRN/RED	20	---	---	XRP_0

WIRE COLOR	WIRE SIZE(REF)	PIN CONTACT PART NO.	PIN LOCATION	CIRCUIT MNEMONIC
BLUE	20	1694 6824	1	XP5V_1
GRN/YEL	20	1694 6824	2	AGRD_0
GRN/WHT	20	1694 6824	3	XGRD_0
WHT/BLK	28	1694 6816	4	XD1_0
WHT/BRN	28	---	---	XD2_0
WHT/RED	28	---	---	XD3_0
WHT/ORG	28	---	---	XD4_0
WHT/BLK/BRN	TP 28	---	---	XD5_0
WHT/GRN/YEL	TP 28	---	---	XD6_0
WHT/GRN/BLK	TP 28	---	---	XD7_0
WHT/BLK/BLK	TP 28	1694 6816	11	EPG2_0
WHT/RED/BLK	TP 28	1694 6816	12	KPNT_00
WHT/GRN/RED	TP 28	1694 6824	13	XGRD_0
WHT/GRN/GRN	TP 28	1694 6824	3	XGRD_0
WHT/RED/BRN	TP 28	1694 6816	4	VENG_0
WHT/RED/RED	TP 28	1694 6816	5	XD5_0
WHT/GRN/BLU	TP 28	1694 6824	16	XGRD_0
WHT/GRN/VIO	TP 28	1694 6824	10	XGRD_0
WHT/RED/ORG	TP 28	1694 6816	7	XINS_0
GRN/RED	20	1694 6824	8	XN12V_1
WHT/VIO	28	1694 6816	9	XRP_0
WHT/YEL	28	---	---	XD5_0
WHT/GRN	28	---	---	XD6_0
WHT/BLU	28	1694 6816	22	XD7_0
BLU/WHT	20	1694 6824	23	XD5V_1
WHT/GRN/BRN	TP 28	1694 6816	24	EPG3_0
WHT/BLK/RED	---	---	---	EPG4_0
WHT/GRN/ORG	---	---	---	ALTA_0
WHT/BLK/YEL	TP 28	---	---	VERR_0
WHT/RED/YEL	TP 28	1694 6816	28	CFORM_0
WHT/GRN/GRY	TP 28	1694 6824	29	XGRD_0
WHT/RED/GRN	TP 28	1694 6816	29	XGRD_0
WHT/RED/BLU	TP 28	1694 6816	30	VLCLM_0
NOT USED	---	---	---	---
WHT/RED/VIO	TP 28	1694 6816	32	VRCVM_0
WHT/BRN/GRN	TP 28	1694 6824	33	XGRD_0
WHT/ORG/GRN	TP 28	1694 6816	34	VXM1M_0
WHT/RED/GRY	TP 28	---	---	---
NOT USED	---	---	---	---
WHT/BLK/GRN	TP 28	1694 6816	36	XD8_0
WHT/BLK/BLU	TP 28	1694 6816	37	XD9_0

TP = TWISTED PAIR

NOTES:  
 1) POLARIZING KEY, PART NO. 1696 2342, INSERTED BETWEEN PINS 5 & 6 ON CONNECTOR PART NO. 1679 8415.

2) 3 STAMP HOOD NEAR SIDE (FAR SIDE, GOthic CHARACTERS .125 HIGH. LOCATE APPROX AS SHOWN. USE WHITE INK, PT NO. 1679 8415.

GEN QUAL SPECS 1183 8343 APPLY	BR5	DATE 3-77	CLASS CODE 2-1531	DO NOT SCALE DWG
TOLERANCES, UNLESS OTHERWISE SPECIFIED JOX & ANGLES & ---	R/RN	3-77	<b>Burroughs Corporation</b> ELECTRONIC COMPONENTS DIVISION PLAINFIELD, NEW JERSEY 07061 U.S.A. AMERICA <b>CABLE ASSEMBLY, KEYBOARD          DC WIRING HARNESS, W 2</b>	
MATERIAL:	R/RN	3-77		
HEAT TREATMENT:	---	---		
SURFACE TREATMENT:	---	---		
PROPRIETARY TO BURROUGHS CORPORATION - NOT TO BE REPRODUCED, NOR USED FOR MANUFACTURING PURPOSES EXCEPT BY BURROUGHS OR UNDER PRIOR WRITTEN CONSENT.	SCALE 1:1	DWG. NO. 1696 3571		

REV	DESCRIPTION
A	REVISED 11-82
B	PCNS# 3765 UPD DRAWING 1000 2) WAS 2-1522 3) DELETED CABLE CLAMP 4159
C	BRN RFN 5-5-72 5-8-72 PCN# 3851
D	1) (1) ADDED (2) ADDED (3) WAS P/1 G.R. 3-77 2) 10-25-72 8-3-72 ECN # 4040
E	(1) & (2) ADDED SAB 3-77 1-16-73 3-16-73 ECN # 4135
F	(1) WAS WHT/YEL WVC 3-77 3-16-73 3-16-73 ECN # 4282
G	(1) WAS XGRD_0 (2) REVISED AND "P" ADDED TABLE E.G.S. 3-16-73 6-25-73 ECN # 4355
H	(1) PIN CONTACT PART NO. WAS 1694 7157 R/RN 6-28-73 ECN # 4344
J	REVISED R/RN 8-25-73 ECN # 4599
K	(1) HOOD WAS PART # 1900 2492 (2) DELETED NOTE # 2 DLC RFN 12-19-73 12-19-73 ECN # 4614
L	(1) ADDED JUN FEB 6-8-74 6-15-74