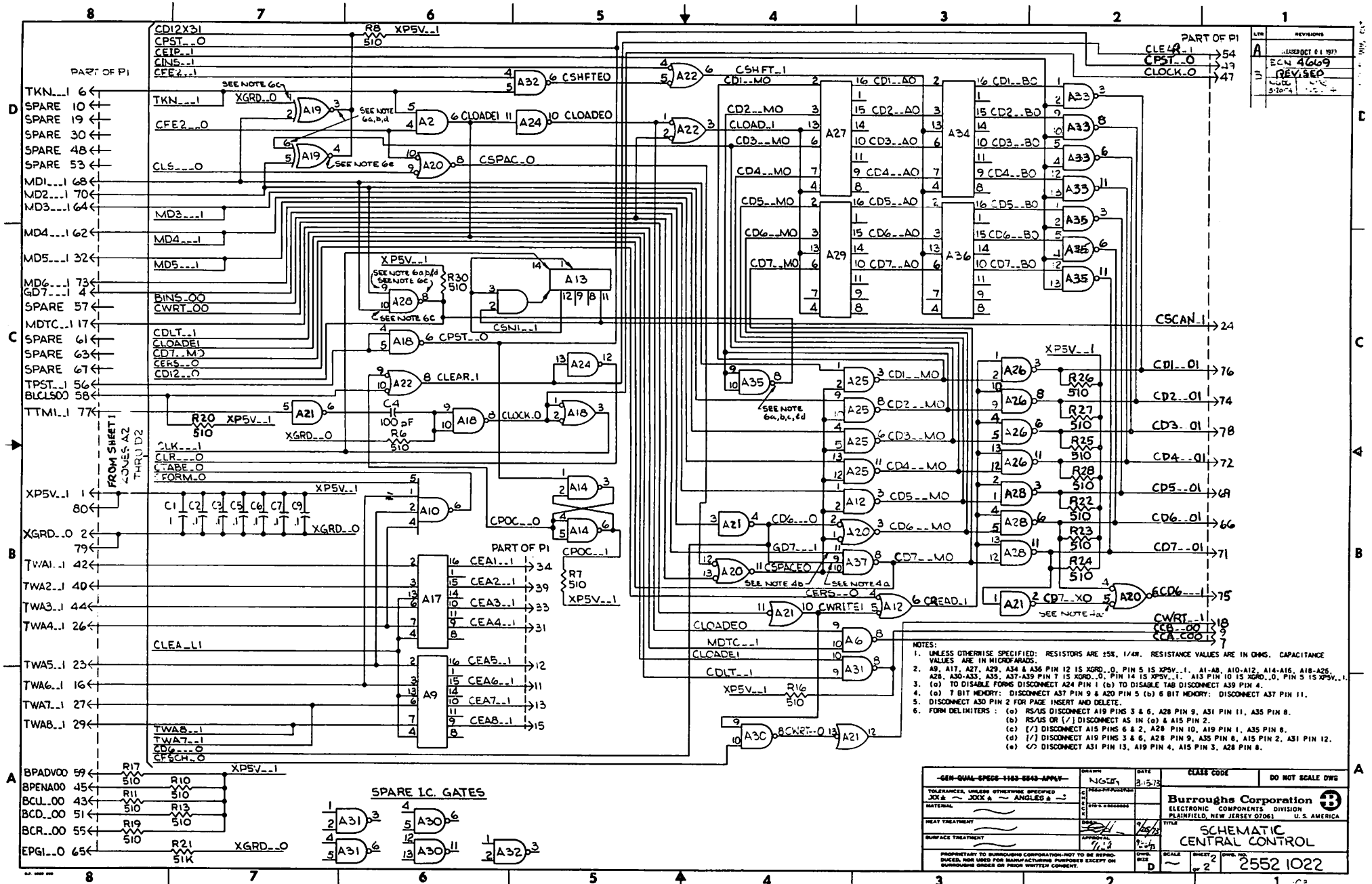


REV	DESCRIPTION
1	...
2	...
3	...

TO SHEET 2 ZONES A8 THRU D8

HIGHEST REFERENCE DESIGNATION	STATUS OF SHEETS
A39 C9 R34	2/18 1/18

NEW YORK OFFICE TOLERANCES, UNLESS OTHERWISE SPECIFIED - FRACTIONS - DECIMALS - ANGLES - MATERIAL - HEAT TREATMENT - SURFACE TREATMENT -	DRAWN NG009 CHECKED MR 7-26-73 MR 7-26-73 APPROVAL 7/12/73	DATE 6-15-73 CLASS CODE 2-9520 DO NOT SCALE DWG	Burroughs Corporation ELECTRONIC COMPONENTS DIVISION PLAINFIELD, NEW JERSEY 07061 U.S. AMERICA
PROPRIETARY TO BURROUGHS CORPORATION-NOT TO BE REPRODUCED OR USED FOR MANUFACTURING PURPOSES EXCEPT ON BURROUGHS ORDERS OR PRIOR WRITTEN CONSENT.		SCALE 1:1 SHEET 2 2552 1022	TITLE SCHEMATIC CENTRAL CONTROL



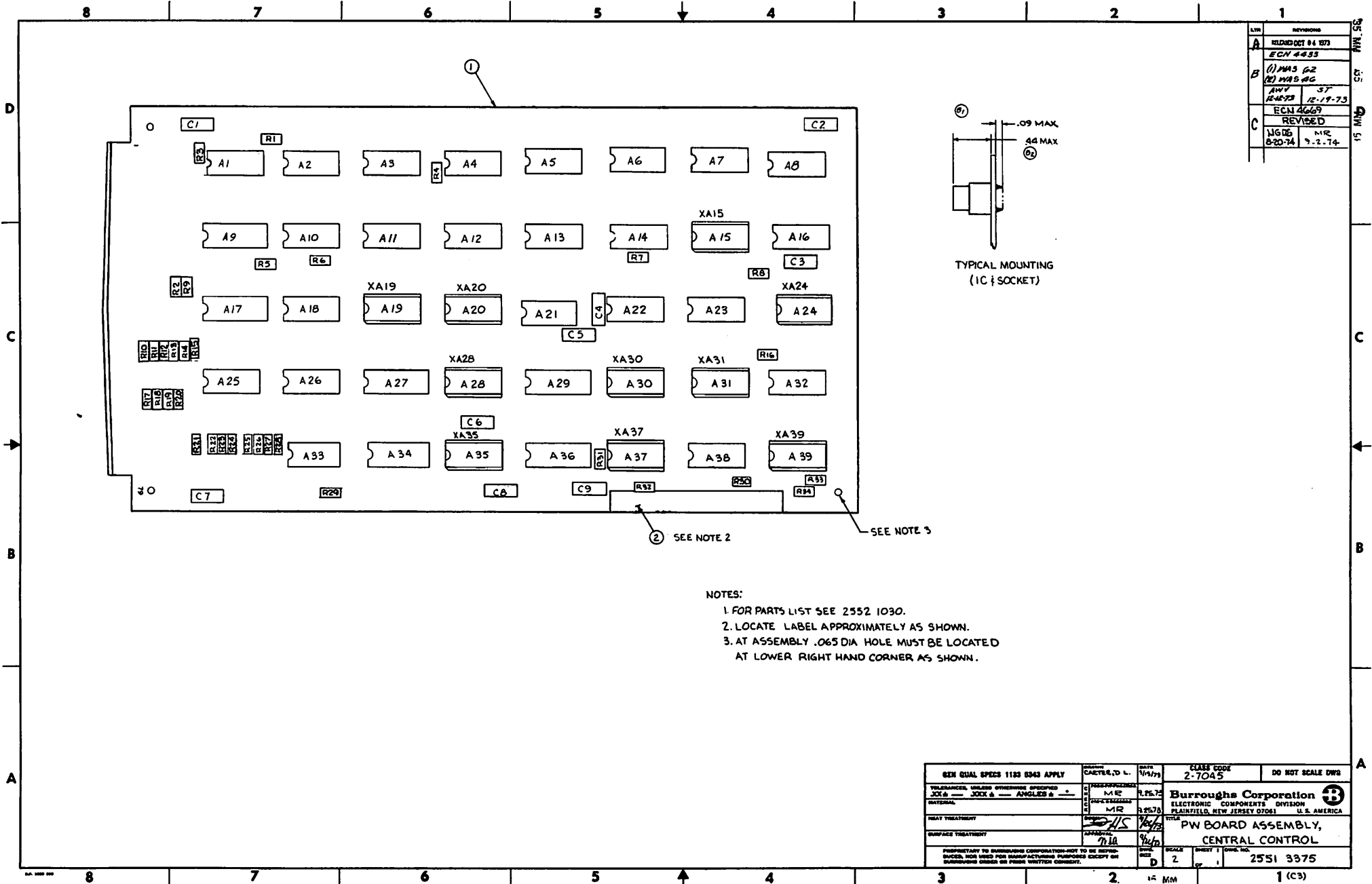
REV	REVISIONS
1	DESIGN 01 1973
2	ECN 4609
3	REVISED
4	REVISED

- NOTES:
- UNLESS OTHERWISE SPECIFIED: RESISTORS ARE 5%, 1/4W. RESISTANCE VALUES ARE IN OHMS. CAPACITANCE VALUES ARE IN MICROFARADS.
 - A9, A17, A27, A29, A34 & A36 PIN 12 IS XGRD., PIN 5 IS XPSV., A1-AB, A10-A12, A14-A16, A18-A26, A28, A30-A33, A35, A37-AS9 PIN 7 IS XGRD., PIN 14 IS XPSV., A13 PIN 10 IS XGRD., PIN 5 IS XPSV., (c) TO DISABLE FORMS DISCONNECT A24 PIN 1 (b) TO DISABLE TAB DISCONNECT A39 PIN 4.
 - (a) 7 BIT MEMORY: DISCONNECT A37 PIN 9 & A20 PIN 5 (b) 6 BIT MEMORY: DISCONNECT A37 PIN 11.
 - DISCONNECT A30 PIN 2 FOR PAGE INSERT AND DELETE.
 - FORM DELIMITERS: (a) RS/US DISCONNECT A19 PINS 3 & 6, A28 PIN 9, A31 PIN 11, A35 PIN 8. (b) RS/US OR (7) DISCONNECT AS IN (a) & A15 PIN 2. (c) (7) DISCONNECT A15 PINS 6 & 2, A28 PIN 10, A19 PIN 1, A35 PIN 8. (d) (7) DISCONNECT A19 PINS 3 & 6, A28 PIN 9, A35 PIN 8, A15 PIN 2, A31 PIN 12. (e) (7) DISCONNECT A31 PIN 13, A19 PIN 4, A15 PIN 3, A28 PIN 8.

-GEN-QUAL-SPEC-1183-8843-APPY-		DATE	CLASS CODE	DO NOT SCALE DWG
TOLERANCES, UNLESS OTHERWISE SPECIFIED X & ~ JXX & ~ ANGLED & ~	NO. OF	3-15-73		
MATERIAL	REV.			
HEAT TREATMENT	DATE			
SURFACE TREATMENT	APPROVAL			
PROPRIETARY TO BURROUGHS CORPORATION-NOT TO BE REPRODUCED, NOR USED FOR MANUFACTURING PURPOSES EXCEPT ON BURROUGHS ORDER OR PRIOR WRITTEN CONSENT.		SCALE	SHEET 2	DWG. NO.
		D	2	2552 1022

Burroughs Corporation
ELECTRONIC COMPONENTS DIVISION
PLAINFIELD, NEW JERSEY 07061 U.S. AMERICA

TITLE
CENTRAL CONTROL



REV	REVISIONS
A	RELEASED OCT 04 1973 ECN 4633
B	(1) MMS 62 (2) MMS 66 MVT 57 R-4873 12-19-73
C	ECN 4669 REVISED LIG DB MNR 8-20-74 9-2-74

- NOTES:
1. FOR PARTS LIST SEE 2552 1030.
 2. LOCATE LABEL APPROXIMATELY AS SHOWN.
 3. AT ASSEMBLY .065 DIA HOLE MUST BE LOCATED AT LOWER RIGHT HAND CORNER AS SHOWN.

GEN QUAL SPECS 1183 8943 APPLY		CLASSIFIED L.	DATE	CLASS CODE	DO NOT SCALE DWS
TOLERANCES, UNLESS OTHERWISE SPECIFIED		CLASSIFICATION	1/14/73	2-7045	
XXX & ---	XXX & ---	CLASS	MR		
MATERIALS		DATE	1/15/73		
HEAT TREATMENT		BY	MR		
SURFACE TREATMENT		DATE	1/15/73		
APPROVAL		BY	MR		
DATE		DATE	1/15/73		
PROPRIETARY TO BURROUGHS CORPORATION-NOT TO BE REPRODUCED, COPIED FOR MANUFACTURING PURPOSES EXCEPT BY BURROUGHS ORDER OR PRIOR WRITTEN CONSENT.		SCALE	2	SHEET 1	2551 3375
		CLASS	D	OF	1

1/8 MM 1 (C3)